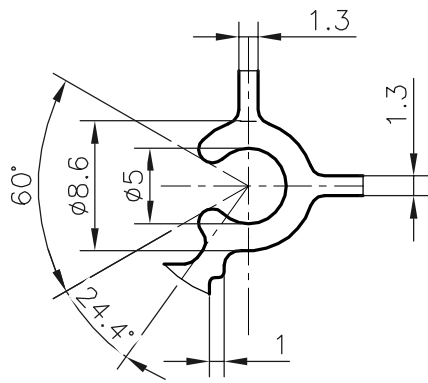
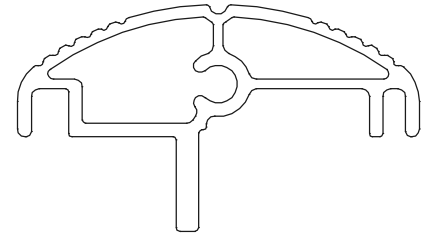


P-20334

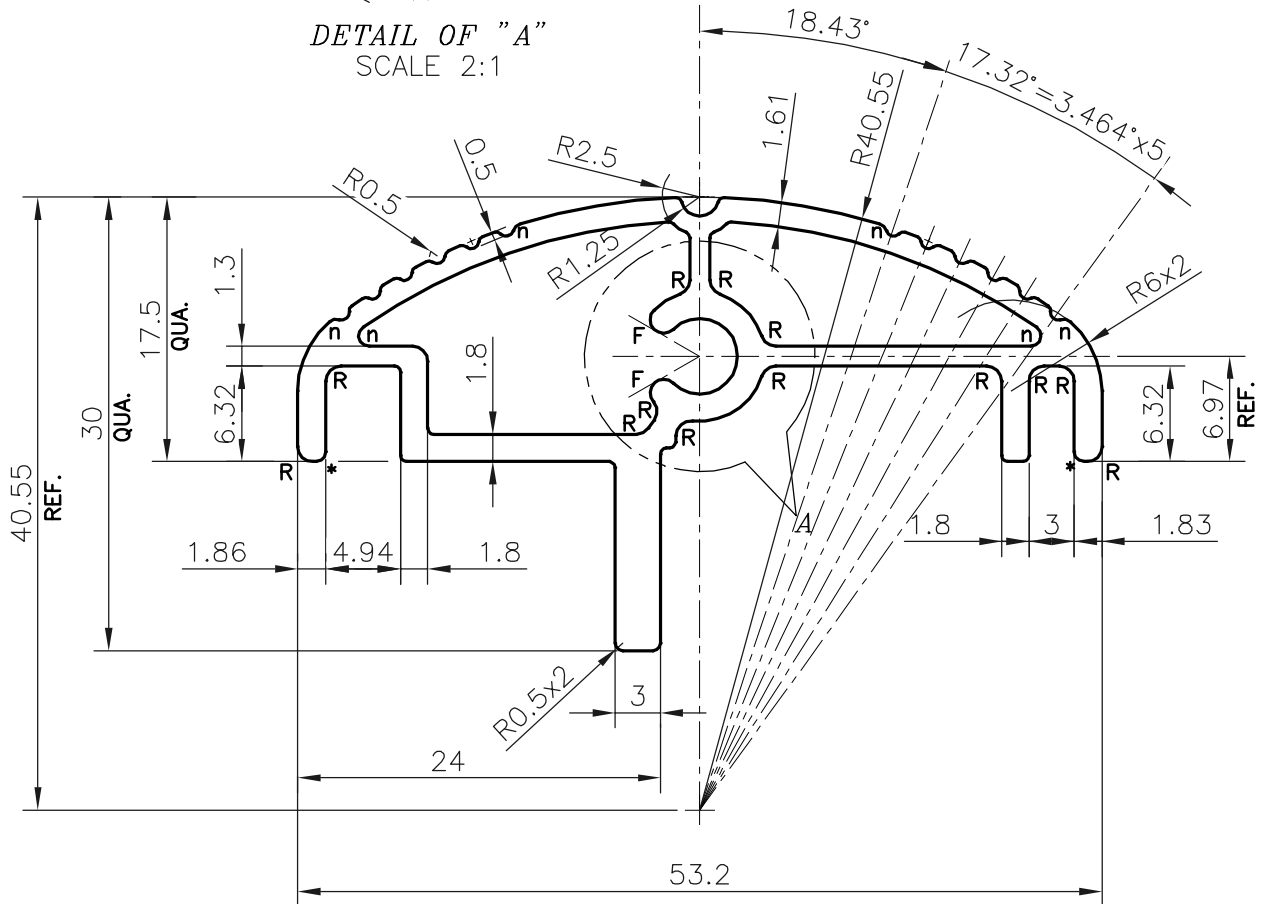
E1206



DETAIL OF "A"  
SCALE 2:1



SCALE: - 1:1



F=FULL RADIUS(2 PLACES)  
R=1 RADIUS (13 PLACES)  
\*=0.65 RADIUS (2 PLACES)  
n=0.7 RADIUS (6 PLACES)

TOLERANCES ON OVERALL DIMENSIONS OF HOLLOW SECTIONS

UPTO 20.0mm - ±0.30	UPTO 80.0mm - ±0.70	UPTO 180.0mm - ±1.27	1. STRAIGHTNESS=1.7mm/M 2. TWIST=1.7mm/M 3. ANGULARITY= ±2° 4. FLATNESS =0.006xWIDTH
UPTO 30.0mm - ±0.38	UPTO 100.0mm - ±0.80	UPTO 200.0mm - ±1.40	
UPTO 40.0mm - ±0.45	UPTO 120.0mm - ±0.90	UPTO 225.0mm - ±1.52	
UPTO 50.0mm - ±0.52	UPTO 140.0mm - ±1.00		
UPTO 60.0mm - ±0.60	UPTO 160.0mm - ±1.14		



SYMBOL OF QUALITY  
AN ISO 9001 COMPANY

**JINDAL ALUMINIUM LTD.**  
BANGALORE-560073 (INDIA)

	NAME	DATE
DRAWN	DARPAN	28-10-2019
CHECKED		
APPROVED	B.NATARAJA	05-11-2019
SCALE		2:1
AREA mm <sup>2</sup>		274.058
PERIMETER mm.		186.788
WEIGHT kg/m		0.74
DRAWING No.	SECTION No.	
P-20334	-	
E1206	E1206	

1. ALL DIMENSIONS ARE IN mm.
2. ROUND OFF ALL SHARP CORNERS WITH 0.40 mm.
3. TOLERANCES WILL BE AS PER IS:6477-1983, UNLESS OTHERWISE SPECIFIED

PARTY'S NAME	SOLMITRA POWER & STEEK PRIVATE LIMITED., BANGALORE.
PARTY'S DRAWING No.	AS PER AUTOCAD DRAWING
ALLOY & TEMPER	6063 T6
DESCRIPTION	ALU EXTURSION-53