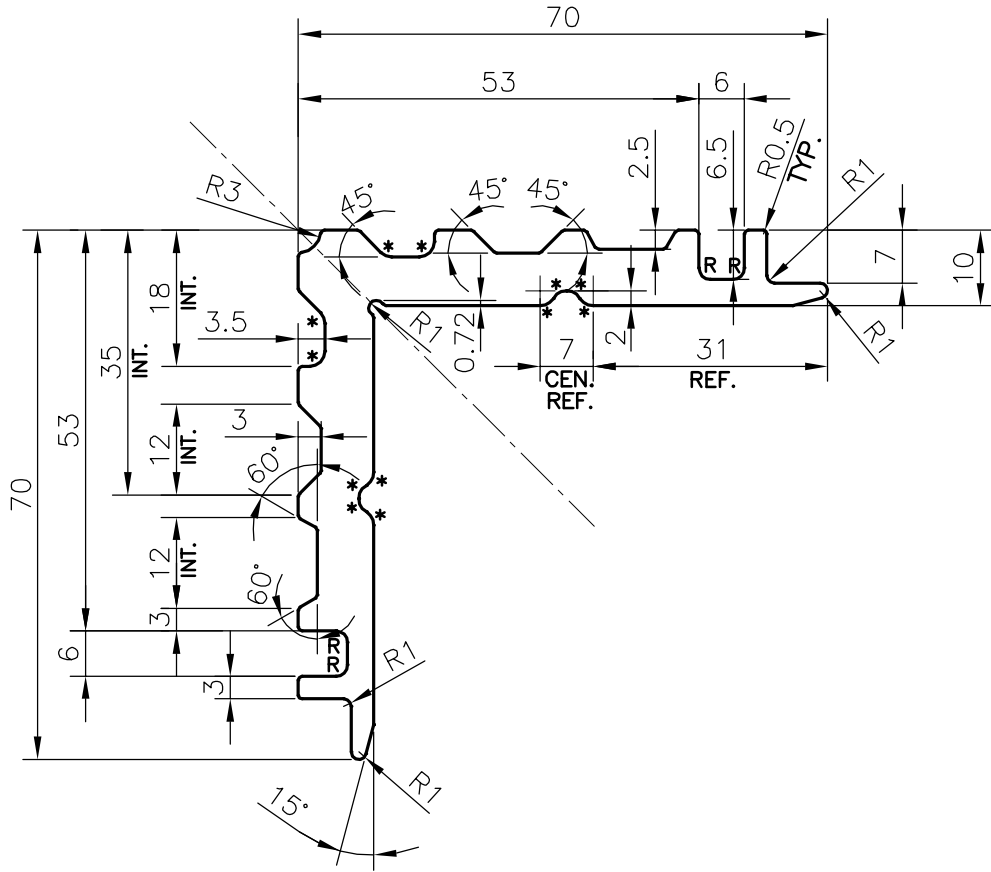


P-19928-3

E1232



PLEASE CONFIRM ALL THE DIMENSIONS AND MATCH WITH YOUR MATCHING COMPONENT				
PLEASE SPECIFY THE EXPOSED SURFACE IN THE DRAWING WHEREVER BETTER FINISH REQUIRED.				
DIMENSION		TOLERANCES (EXCEPT OPEN ENDS)	TOLERANCES (OPEN ENDS)	
OVER	UP TO AND INCLUDING		E≤60	60<E≤120
-	10	±0.15	±0.15	-
10	15	±0.20	±0.20	-
15	30	±0.25	±0.25	-
30	45	±0.30	±0.30	±0.45
45	60	±0.40	±0.40	±0.55
60	90	±0.45	±0.45	±0.65
90	120	±0.60	±0.60	±0.80
120	150	±0.80	±0.80	±1.0
150	180	±1.0	±1.0	±1.3
180	240	±1.2	±1.2	±1.5
240	300	±1.5	±1.5	±1.8

* = R2 (12 PLACES)
R = R1.5 (4 PLACES)



SYMBOL OF QUALITY
AN ISO 9001 COMPANY

JINDAL ALUMINIUM LTD.
BANGALORE-560073 (INDIA)

	NAME	DATE
DRAWN	DARPAN	18-09-2019
CHECKED		
APPROVED	B.NATARAJA	16-11-2019
SCALE		1:1
AREA mm ²		919.896
PERIMETER mm.		318.277
WEIGHT kg/m		2.484
DRAWING No.		SECTION No.
P-19928-3		-
E1232		E1232

- ALL DIMENSIONS ARE IN mm.
- ROUND OFF ALL SHARP CORNERS WITH 0.40 mm.
- TOLERANCES WILL BE AS PER EN-12020-2, UNLESS OTHERWISE SPECIFIED

PARTY'S NAME	EUROPEAN FACADE PRODUCTS., NETHERLANDS.
PARTY'S DRAWING No.	AS PER AUTOCAD DRAWING EFP 14.318
ALLOY & TEMPER	6063 T6
DESCRIPTION	CORNER CLEAT 10mm, SHORT