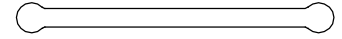
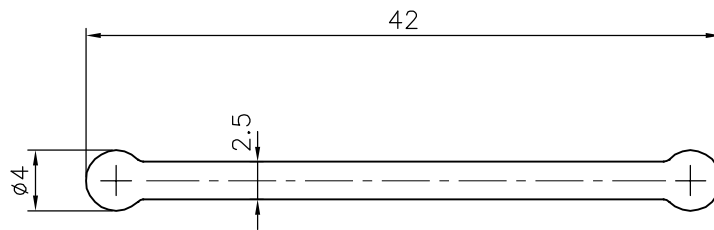


P-19972-1

E1234



1:1



UNSPECIFIED RADIUS 0.5 mm

DIMENSION		TOLERANCES (EXCEPT OPEN ENDS)	TOLERANCES (OPEN ENDS)	
OVER	UP TO AND INCLUDING		$E \leq 60$	$60 < E \leq 120^D$
-	10	± 0.15	± 0.15	-
10	15	± 0.20	± 0.20	-
15	30	± 0.25	± 0.25	-
30	45	± 0.30	± 0.30	± 0.45
45	60	± 0.40	± 0.40	± 0.55
60	90	± 0.45	± 0.45	± 0.65
90	120	± 0.60	± 0.60	± 0.80
120	150	± 0.80	± 0.80	± 1.0
150	180	± 1.0	± 1.0	± 1.3
180	240	± 1.2	± 1.2	± 1.5
240	300	± 1.5	± 1.5	± 1.8



SYMBOL OF QUALITY
AN ISO 9001 COMPANY

JINDAL ALUMINIUM LTD.
BANGALORE-560073 (INDIA)

	NAME	DATE
DRAWN	J.P.KAUSHIK	04-09-2019
CHECKED		
APPROVED	B.NATARAJA	16-11-2019

SCALE	2:1
AREA mm ²	110.854
PERIMETER mm.	89.379
WEIGHT kg/m	0.299

DRAWING No.	SECTION No.
P-19972-1	-
E1234	E1234

1. ALL DIMENSIONS ARE IN mm.
2. ROUND OFF ALL SHARP CORNERS WITH 0.40 mm.
3. TOLERANCES WILL BE AS PER BS:EN-12020-2 , UNLESS OTHERWISE SPECIFIED

PARTY'S NAME	EUROPEAN FACADE PRODUCTS, NETHERLANDS
PARTY'S DRAWING No.	EFP 65 UNITISED -18.315
ALLOY & TEMPER	6063 T6
DESCRIPTION	CENTER SEAL REINFORCEMENT SECTION