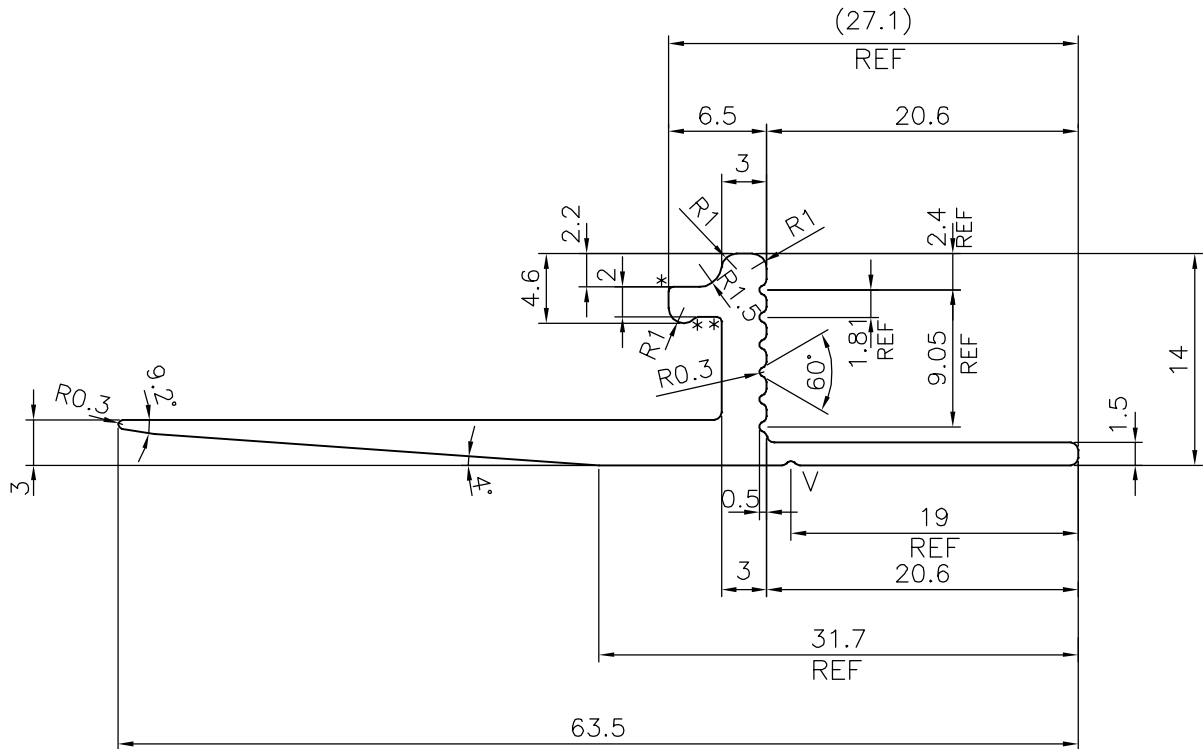
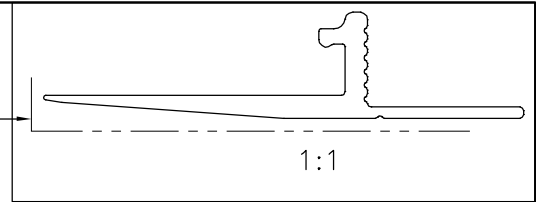


P-19974-4

E1236

EXPOSED SURFACE



* = RADIUS 0.30 (3 PLACES)
 V= V GROOVE 0.3x90° (1 PLACE)
 UNSPECIFIED RADIUS 0.5 mm

DIMENSION		TOLERANCES (EXCEPT OPEN ENDS)	TOLERANCES (OPEN ENDS)	
OVER	UP TO AND INCLUDING		E≤60	60<E≤120 ^Q
-	10	±0.15	±0.15	-
10	15	±0.20	±0.20	-
15	30	±0.25	±0.25	-
30	45	±0.30	±0.30	±0.45
45	60	±0.40	±0.40	±0.55
60	90	±0.45	±0.45	±0.65
90	120	±0.60	±0.60	±0.80
120	150	±0.80	±0.80	±1.0
150	180	±1.0	±1.0	±1.3
180	240	±1.2	±1.2	±1.5
240	300	±1.5	±1.5	±1.8



SYMBOL OF QUALITY
 AN ISO 9001 COMPANY

JINDAL ALUMINIUM LTD.
 BANGALORE-560073 (INDIA)

	NAME	DATE
DRAWN	J.P.KAUSHIK	27-09-2019
CHECKED		
APPROVED	B.NATARAJA	16-11-2019

1. ALL DIMENSIONS ARE IN mm.
2. ROUND OFF ALL SHARP CORNERS WITH 0.40 mm.
3. TOLERANCES WILL BE AS PER BS:EN-12020-2 , UNLESS OTHERWISE SPECIFIED

SCALE	2:1
AREA mm ²	162.271
PERIMETER mm.	159.678
WEIGHT kg/m	0.438

PARTY'S NAME	EUROPEAN FACADE PRODUCTS, NETHERLANDS	DRAWING No.	SECTION No.
PARTY'S DRAWING No.	EFP 65 UNITISED -18.333	P-19974-4	-
ALLOY & TEMPER	6063 T6	E1236	E1236
DESCRIPTION	GLASS SETTING SECTION		