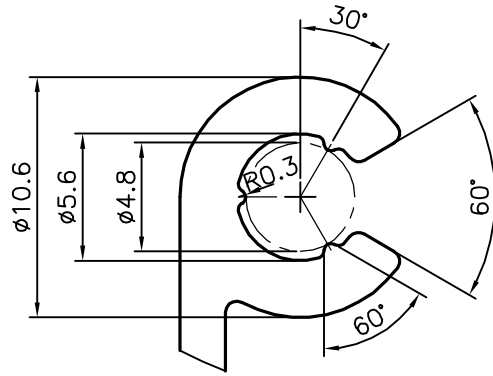
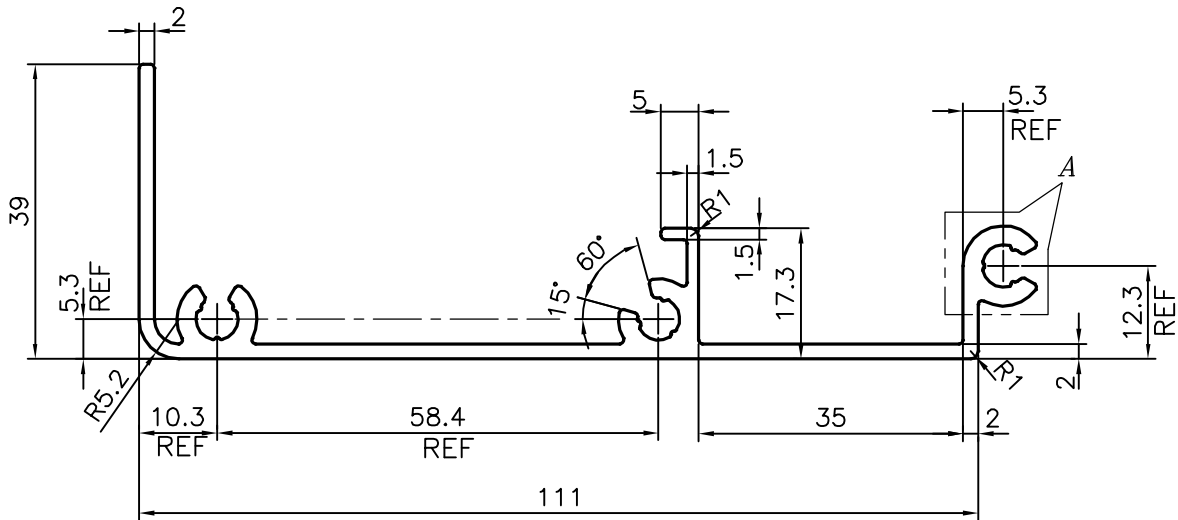


P-20522

E1277




DETAIL OF "A"
SCALE 3:1



UNSPECIFIED RADIUS 0.50 mm

TOLERANCES ON OVERALL DIMENSIONS OF HOLLOW SECTIONS

UPTO 20.0mm - ±0.30	UPTO 80.0mm - ±0.70	UPTO 180.0mm - ±1.27	1. STRAIGHTNESS=1.7mm/M 2. TWIST=1.7mm/M 3. ANGULARITY= ±2° 4. FLATNESS =0.006xWIDTH
UPTO 30.0mm - ±0.38	UPTO 100.0mm - ±0.80	UPTO 200.0mm - ±1.40	
UPTO 40.0mm - ±0.45	UPTO 120.0mm - ±0.90	UPTO 225.0mm - ±1.52	
UPTO 50.0mm - ±0.52	UPTO 140.0mm - ±1.00		
UPTO 60.0mm - ±0.60	UPTO 160.0mm - ±1.14		

 SYMBOL OF QUALITY AN ISO 9001 COMPANY	JINDAL ALUMINIUM LTD. BANGALORE-560073 (INDIA)	NAME	DATE
		DRAWN	J.P.KAUSHIK
		CHECKED	
		APPROVED	B.NATARAJA
		SCALE	1:1
		AREA mm ²	465.725
		PERIMETER mm.	429.233
		WEIGHT kg/m	1.257
PARTY'S NAME	EBERSPAECHER SUETRAK BUS CLIMATE CONTROL SYSTEMS INDIA PVT. LTD., BANGALORE	DRAWING No.	SECTION No.
PARTY'S DRAWING No.		88-50-47-01351-00	P-20522
ALLOY & TEMPER	AlMgSi0.5F22	E1277	E1277
DESCRIPTION	MOUNTING STRIP HOUSING SECTION		

1. ALL DIMENSIONS ARE IN mm.
2. ROUND OFF ALL SHARP CORNERS WITH 0.40 mm.
3. TOLERANCES WILL BE AS PER IS:3965-1981 UNLESS OTHERWISE SPECIFIED