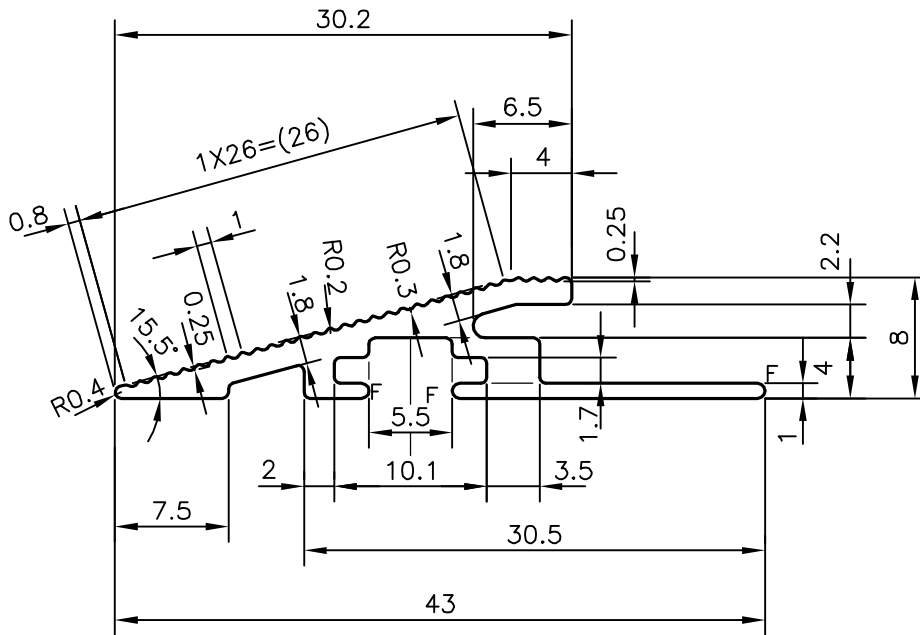
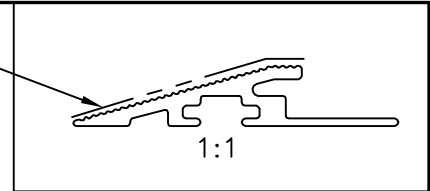


P-20590

E1285

EXPOSED SURFACE



F= FULL RADIUS (3 PLACES)

PLEASE SPECIFY THE EXPOSED SURFACE IN THE DRAWING WHEREVER BETTER FINISH REQUIRED.

TOLERANCES ON OVERALL WIDTHS & WIDTHS ACROSS FLATS OF BARS, & REGULAR SECTIONS

UPTO 6.40mm - ±0.20	UPTO 32.0mm - ±0.38	UPTO 120.0mm - ±0.85	UPTO 320.00mm - ±1.70
UPTO 10.0mm - ±0.23	UPTO 50.0mm - ±0.46	UPTO 160.0mm - ±1.02	
UPTO 12.0mm - ±0.25	UPTO 60.0mm - ±0.53	UPTO 200.0mm - ±1.14	
UPTO 16.0mm - ±0.28	UPTO 80.0mm - ±0.69	UPTO 250.0mm - ±1.40	
UPTO 25.0mm - ±0.30	UPTO 100.0mm - ±0.75	UPTO 300.0mm - ±1.65	



SYMBOL OF QUALITY
AN ISO 9001 COMPANY

JINDAL ALUMINIUM LTD.
BANGALORE-560073 (INDIA)

	NAME	DATE
DRAWN	J.P.KAUSHIK	07-01-2020
CHECKED		
APPROVED	B.NATARAJA	17-01-2020
SCALE		2:1
AREA mm ²		97.062
PERIMETER mm.		127.971
WEIGHT kg/m		0.262
DRAWING No.	SECTION No.	
P-20590	-	
E1285	E1285	

- ALL DIMENSIONS ARE IN mm.
- ROUND OFF ALL SHARP CORNERS WITH 0.40 mm.
IS:3965-1981

PARTY'S NAME	SURFACES, BANGALORE
PARTY'S DRAWING No.	AS PER E0448
ALLOY & TEMPER	HE9 WP
DESCRIPTION	MISC. SECTION