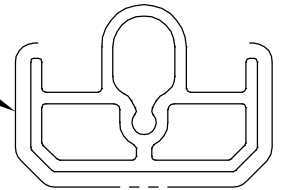


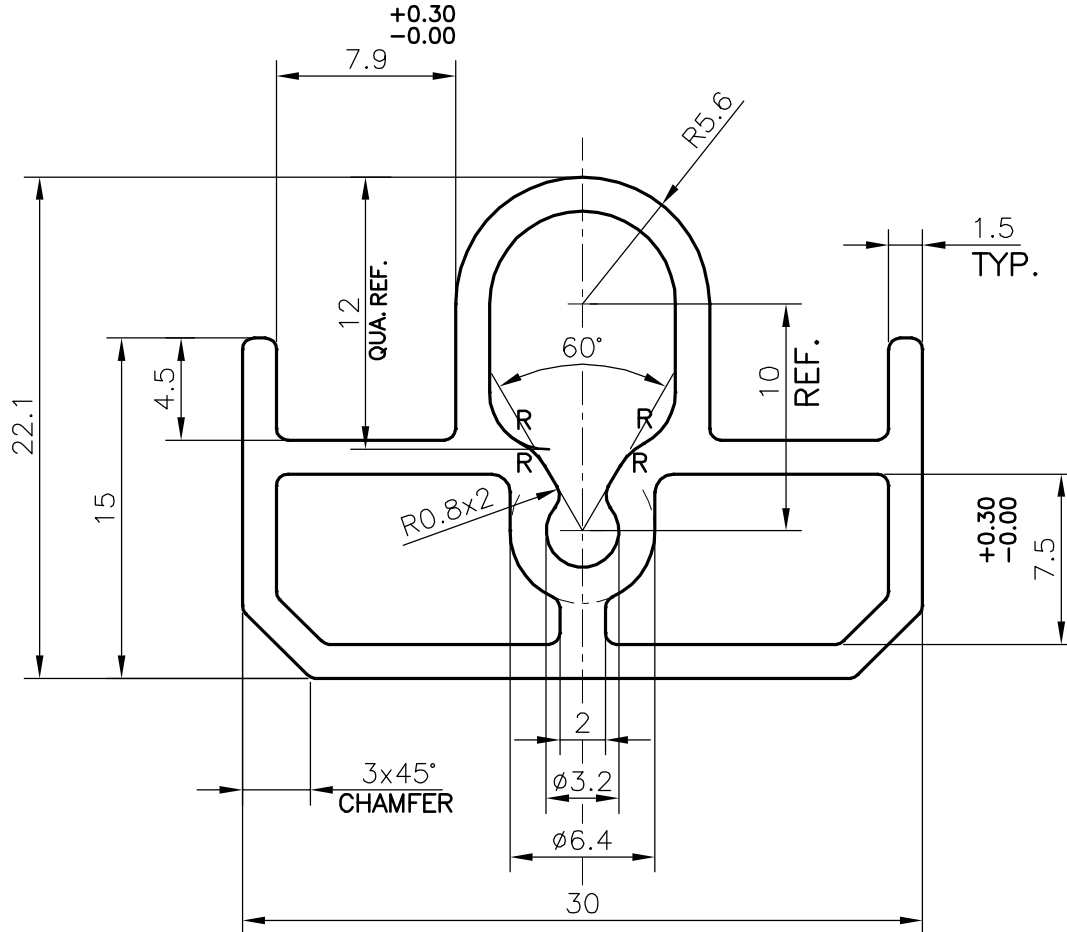
P-20656

E1324

ANODIZED SURFACE



SCALE: - 1:1



SCALE: - 3:1

R = R2.5mm RADIUS (4 PLACES)

TOLERANCES ON OVERALL DIMENSIONS OF HOLLOW SECTIONS

| | | | |
|---------------------|----------------------|----------------------|---|
| UPTO 20.0mm - ±0.30 | UPTO 80.0mm - ±0.70 | UPTO 180.0mm - ±1.27 | 1. STRAIGHTNESS=1.7mm/M 2. TWIST=1.7mm/M 3. ANGULARITY= ±2° 4. FLATNESS =0.006xWIDTH |
| UPTO 30.0mm - ±0.38 | UPTO 100.0mm - ±0.80 | UPTO 200.0mm - ±1.40 | |
| UPTO 40.0mm - ±0.45 | UPTO 120.0mm - ±0.90 | UPTO 225.0mm - ±1.52 | |
| UPTO 50.0mm - ±0.52 | UPTO 140.0mm - ±1.00 | | |
| UPTO 60.0mm - ±0.60 | UPTO 160.0mm - ±1.14 | | |



SYMBOL OF QUALITY
AN ISO 9001 COMPANY

JINDAL ALUMINIUM LTD.
BANGALORE-560073 (INDIA)

| | | |
|----------------------|-------------|------------|
| | NAME | DATE |
| DRAWN | DARPAN | 31-01-2020 |
| CHECKED | | |
| APPROVED | B.NATARAJA | 29/05/2020 |
| SCALE | | 3:1 |
| AREA mm ² | | 183.572 |
| PERIMETER mm. | | 112.075 |
| WEIGHT kg/m | | 0.496 |
| DRAWING No. | SECTION No. | |
| P-20656 | - | |
| E1324 | E1324 | |

1. ALL DIMENSIONS ARE IN mm.
2. ROUND OFF ALL SHARP CORNERS WITH 0.40 mm.
3. TOLERANCES WILL BE AS PER IS:6477-1983, UNLESS OTHERWISE SPECIFIED

| | |
|---------------------|--|
| PARTY'S NAME | WIPRO ENTERPRISES (P) LIMITED., AURANGABAD |
| PARTY'S DRAWING No. | XBR-2D-E004 |
| ALLOY & TEMPER | 6063 T6 |
| DESCRIPTION | LIV SIDE EXTRUSION 333 SECTION |