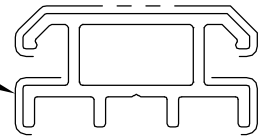


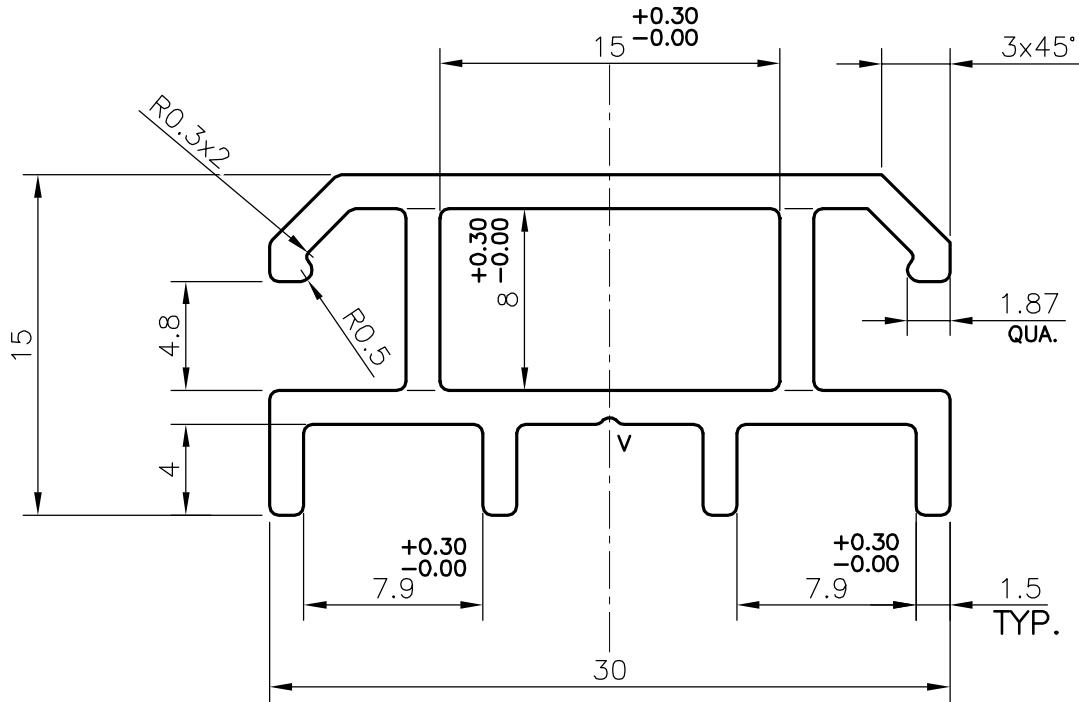
P-20659

E1327

ANODIZED SURFACE



SCALE: - 1:1



SCALE: - 3:1

V="v" GROOVE 0.3x90° (1 PLACE)

TOLERANCES ON OVERALL DIMENSIONS OF HOLLOW SECTIONS

UPTO 20.0mm - ±0.30
UPTO 30.0mm - ±0.38
UPTO 40.0mm - ±0.45
UPTO 50.0mm - ±0.52
UPTO 60.0mm - ±0.60

UPTO 80.0mm - ±0.70
UPTO 100.0mm - ±0.80
UPTO 120.0mm - ±0.90
UPTO 140.0mm - ±1.00
UPTO 160.0mm - ±1.14

UPTO 180.0mm - ±1.27
UPTO 200.0mm - ±1.40
UPTO 225.0mm - ±1.52

1. STRAIGHTNESS=1.7mm/M
2. TWIST=1.7mm/M
3. ANGULARITY= ±2°
4. FLATNESS =0.006xWIDTH



SYMBOL OF QUALITY
AN ISO 9001 COMPANY

JINDAL ALUMINIUM LTD.
BANGALORE-560073 (INDIA)

	NAME	DATE
DRAWN	DARPAN	30-01-2020
CHECKED		
APPROVED	B.NATARAJA	29/05/2020

1. ALL DIMENSIONS ARE IN mm.
2. ROUND OFF ALL SHARP CORNERS WITH 0.40 mm.
3. TOLERANCES WILL BE AS PER IS:6477-1983, UNLESS OTHERWISE SPECIFIED

SCALE	3:1
AREA mm ²	143.556
PERIMETER mm.	141.469
WEIGHT kg/m	0.388

PARTY'S NAME	WIPRO ENTERPRISES (P) LIMITED., BANGALORE
PARTY'S DRAWING No.	XBR-2D-E002
ALLOY & TEMPER	6063 T6
DESCRIPTION	LIV TOP EXTRUSION 333 SECTION

DRAWING No.	P-20659	SECTION No.	-
	E1327		E1327