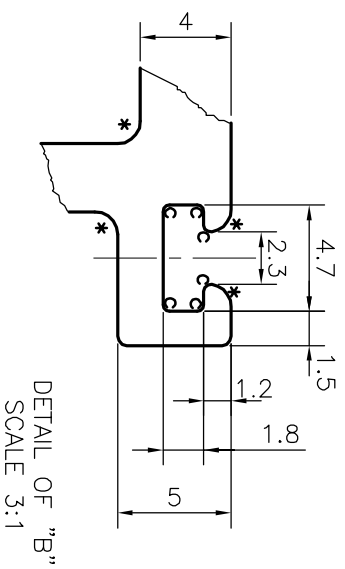
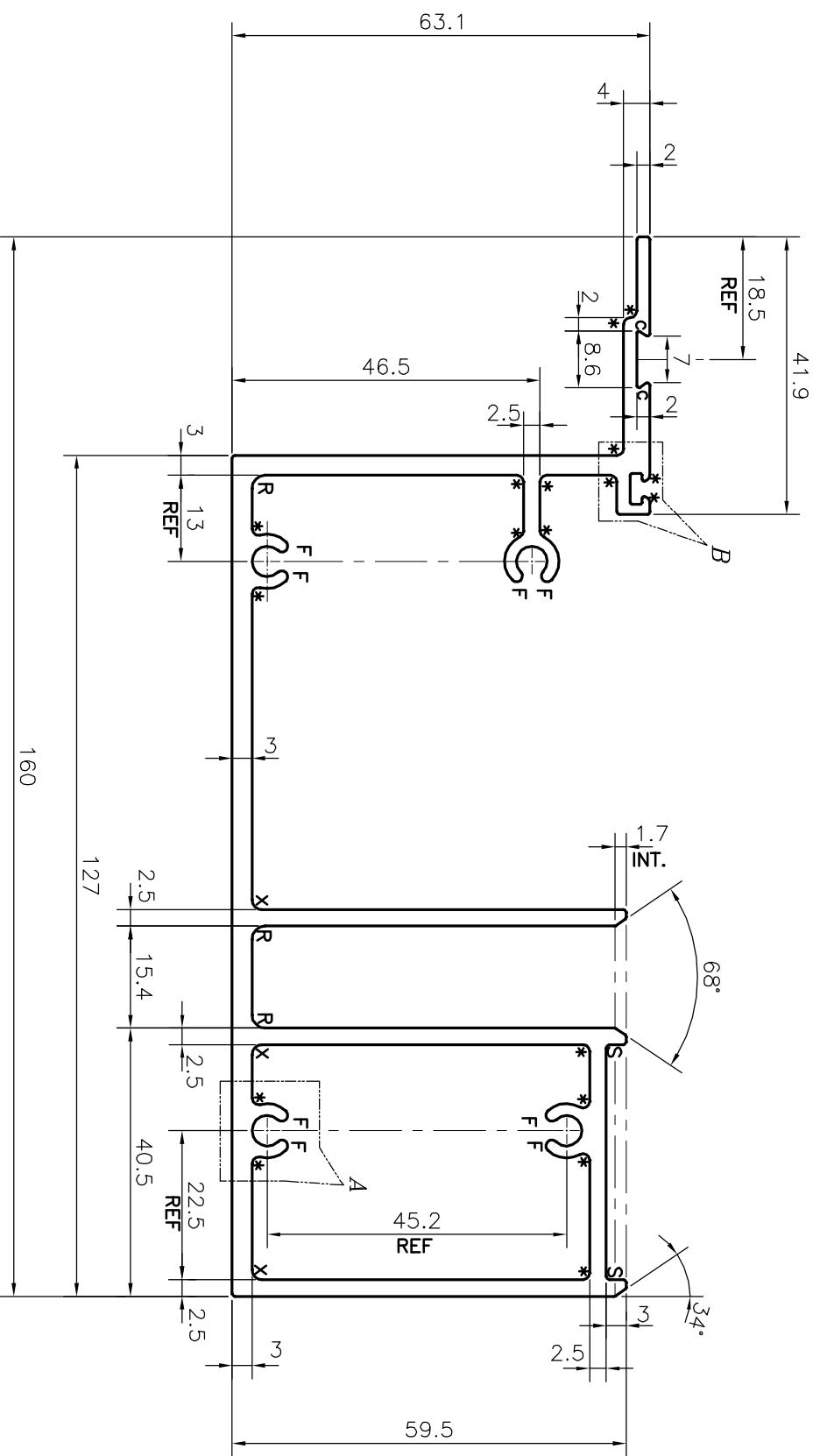
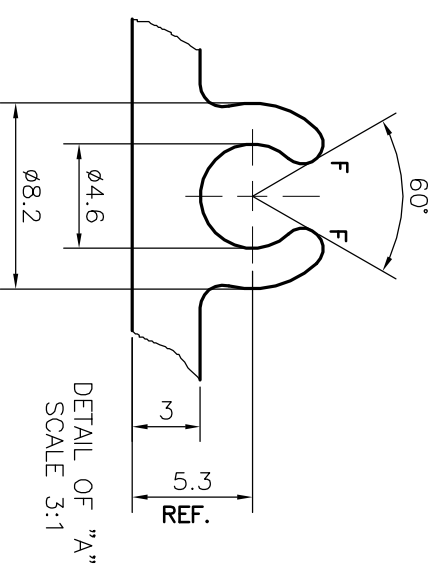


P-21000

E1328



DETAIL OF "B"
SCALE 3:1



DETAIL OF "A"
SCALE 3:1

TOLERANCES ON OVERALL DIMENSIONS OF HOLLOW SECTIONS

UPTO 20.0mm - ±0.30	UPTO 80.0mm - ±0.70	UPTO 180.0mm - ±1.27
UPTO 30.0mm - ±0.38	UPTO 100.0mm - ±0.80	UPTO 200.0mm - ±1.40
UPTO 40.0mm - ±0.45	UPTO 120.0mm - ±0.90	UPTO 225.0mm - ±1.52
UPTO 50.0mm - ±0.52	UPTO 140.0mm - ±1.00	
UPTO 60.0mm - ±0.60	UPTO 160.0mm - ±1.14	

- S = RADIUS 0.50 (2 PLACES)
- C = RADIUS 0.30 (8 PLACES)
- F = FULL RADIUS (8 PLACES)
- * = RADIUS 1.0 (18 PLACES)
- x = RADIUS 1.5 (3 PLACES)
- R = RADIUS 2.0 (3 PLACES)

1. STRAIGHTNESS=1.0mm/M
2. TWIST=1.0mm/M
3. ANGULARITY= ±1°
4. FLATNESS =0.007xWIDTH

<p>JINDAL SYMBOL OF QUALITY AN ISO 9001 COMPANY</p>		<p>JINDAL ALUMINIUM LTD. BANGALORE-560073 (INDIA)</p>	
<p>1. ALL DIMENSIONS ARE IN mm. 2. ROUND OFF ALL SHARP CORNERS WITH 0.40 mm. 3. TOLERANCES WILL BE AS PER IS:6477-1983 UNLESS OTHERWISE SPECIFIED</p>			
PARTY'S NAME	ALUFIT (INDIA) PVT. LTD., BANGALORE		
PARTY'S DRAWING No.	AS PER DRAWING		
ALLOY & TEMPER	6063 T6		
DESCRIPTION	SILL TRANSOM SECTION		
DRAWN	NAME	DATE	
CHECKED	J.P.KAUSHIK	23-05-2020	
APPROVED	B.NATARAJA	02/06/2020	
SCALE	1:1		
AREA	mm ²	1311.052	
PERIMETER	mm.	761.287	
WEIGHT	kg/m	3.540	
DRAWING No.	SECTION No.		
P-21000	-		
E1328	E1328		