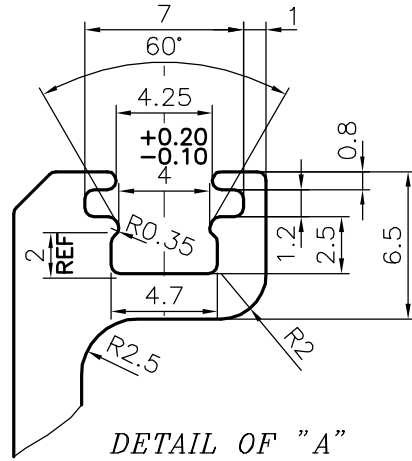
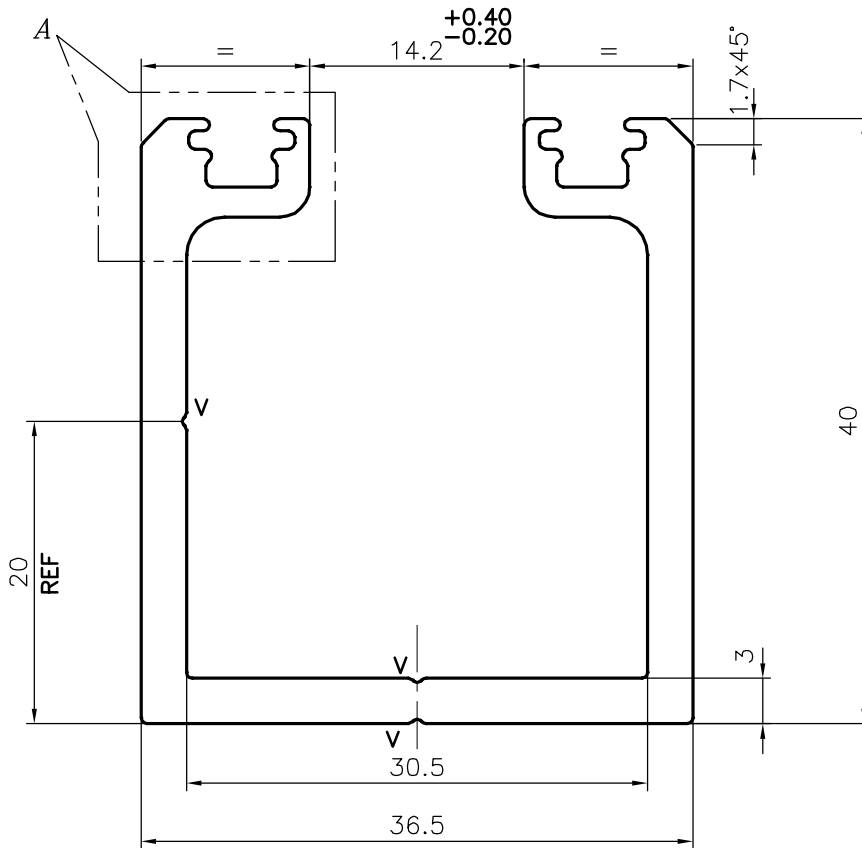
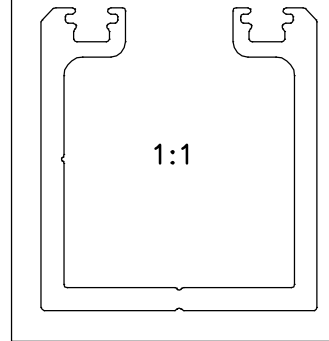


P-20712-1

E1329



DETAIL OF "A"
SCALE 3:1



V = V GROOVE 0.3x90° (3 PLACES)

TOLERANCES ON OVERALL WIDTHS & WIDTHS ACROSS FLATS OF BARS, & REGULAR SECTIONS

UPTO 6.40mm - ±0.20	UPTO 32.0mm - ±0.38	UPTO 120.0mm - ±0.85	UPTO 320.00mm - ±1.70
UPTO 10.0mm - ±0.23	UPTO 50.0mm - ±0.46	UPTO 160.0mm - ±1.02	
UPTO 12.0mm - ±0.25	UPTO 60.0mm - ±0.53	UPTO 200.0mm - ±1.14	
UPTO 16.0mm - ±0.28	UPTO 80.0mm - ±0.69	UPTO 250.0mm - ±1.40	
UPTO 25.0mm - ±0.30	UPTO 100.0mm - ±0.75	UPTO 300.0mm - ±1.65	



SYMBOL OF QUALITY
AN ISO 9001 COMPANY

JINDAL ALUMINIUM LTD.
BANGALORE-560073 (INDIA)

	NAME	DATE
DRAWN	J.P.KAUSHIK	19-02-2020
CHECKED		
APPROVED	B.NATARAJA	08/06/2020

- ALL DIMENSIONS ARE IN mm.
- ROUND OFF ALL SHARP CORNERS WITH 0.40 mm.
- TOLERANCES WILL BE AS PER BS:EN-755-9, UNLESS OTHERWISE SPECIFIED

SCALE	2:1
AREA mm ²	388.882
PERIMETER mm.	279.789
WEIGHT kg/m	1.050

PARTY'S NAME	DISTRIBUIDORA DE SISTEMAS DE CIERRE S.L, SPAIN
PARTY'S DRAWING No.	ALU001
ALLOY & TEMPER	6063 T5
DESCRIPTION	MISC. CHANNEL

DRAWING No.	SECTION No.
P-20712-1	-
E1329	E1329