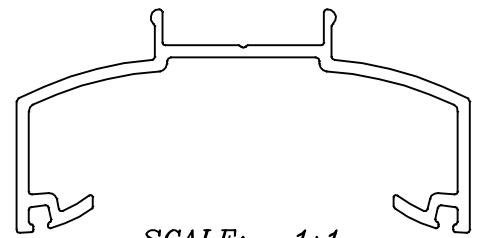
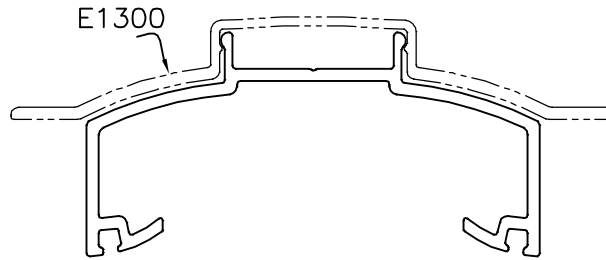
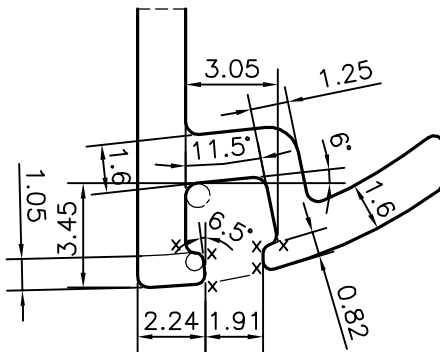
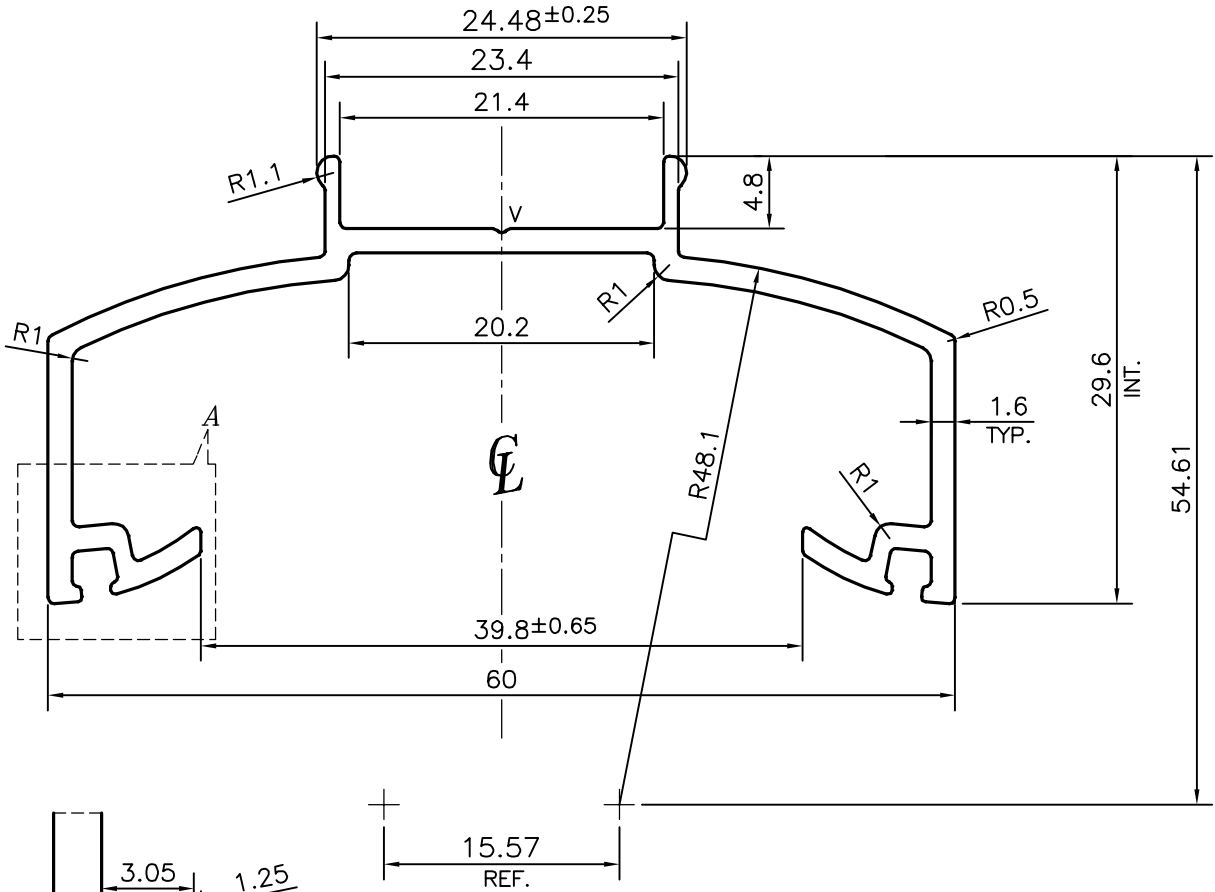


P-21047

E1334



SCALE: - 1:1



DETAIL OF "A"
SCALE 4:1

V = VEE GROOVE 0.3x90° (1 PLACE)
X = RADIUS 0.3 mm. (12 PLACES)

DIMENSION		TOLERANCES (EXCEPT OPEN ENDS)	TOLERANCES (OPEN ENDS)	
OVER	UP TO AND INCLUDING		E≤60	60≤E<120
-	10	±0.15	±0.15	-
10	15	±0.20	±0.20	-
15	30	±0.25	±0.25	-
30	45	±0.30	±0.30	±0.45
45	60	±0.40	±0.40	±0.55
60	90	±0.45	±0.45	±0.65
90	120	±0.60	±0.60	±0.80
120	150	±0.80	±0.80	±1.0
150	180	±1.0	±1.0	±1.3
180	240	±1.2	±1.2	±1.5
240	300	±1.5	±1.5	±1.8



SYMBOL OF QUALITY
AN ISO 9001 COMPANY

JINDAL ALUMINIUM LTD.
BANGALORE-560073 (INDIA)

	NAME	DATE
DRAWN	PARVESH	03-06-2020
CHECKED		
APPROVED	B.NATARAJA	18-07-2020

- ALL DIMENSIONS ARE IN mm.
- ROUND OFF ALL SHARP CORNERS WITH 0.40 mm.
- TOLERANCES WILL BE AS PER BS:EN-755-9 , UNLESS OTHERWISE SPECIFIED

SCALE	2:1
AREA mm ²	204.26
PERIMETER mm.	262.898
WEIGHT kg/m	0.552

PARTY'S NAME	CLEAR AMBER GROUP, UK
PARTY'S DRAWING No.	AS PER DRAWING-206672
ALLOY & TEMPER	6063 T6
DESCRIPTION	HIP BAR SECTION

DRAWING No.	SECTION No.
P-21047	-
E1334	E1334