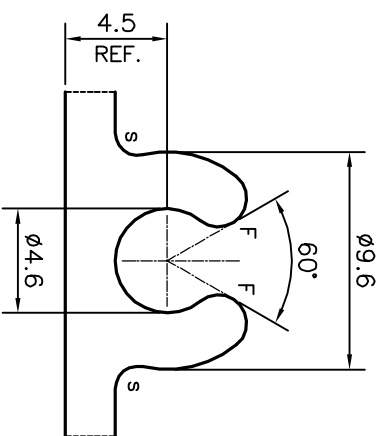
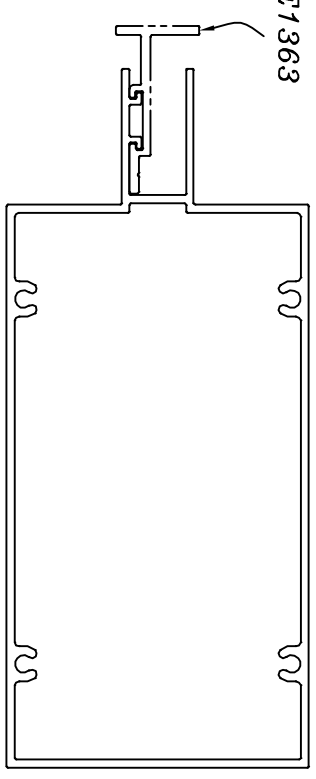
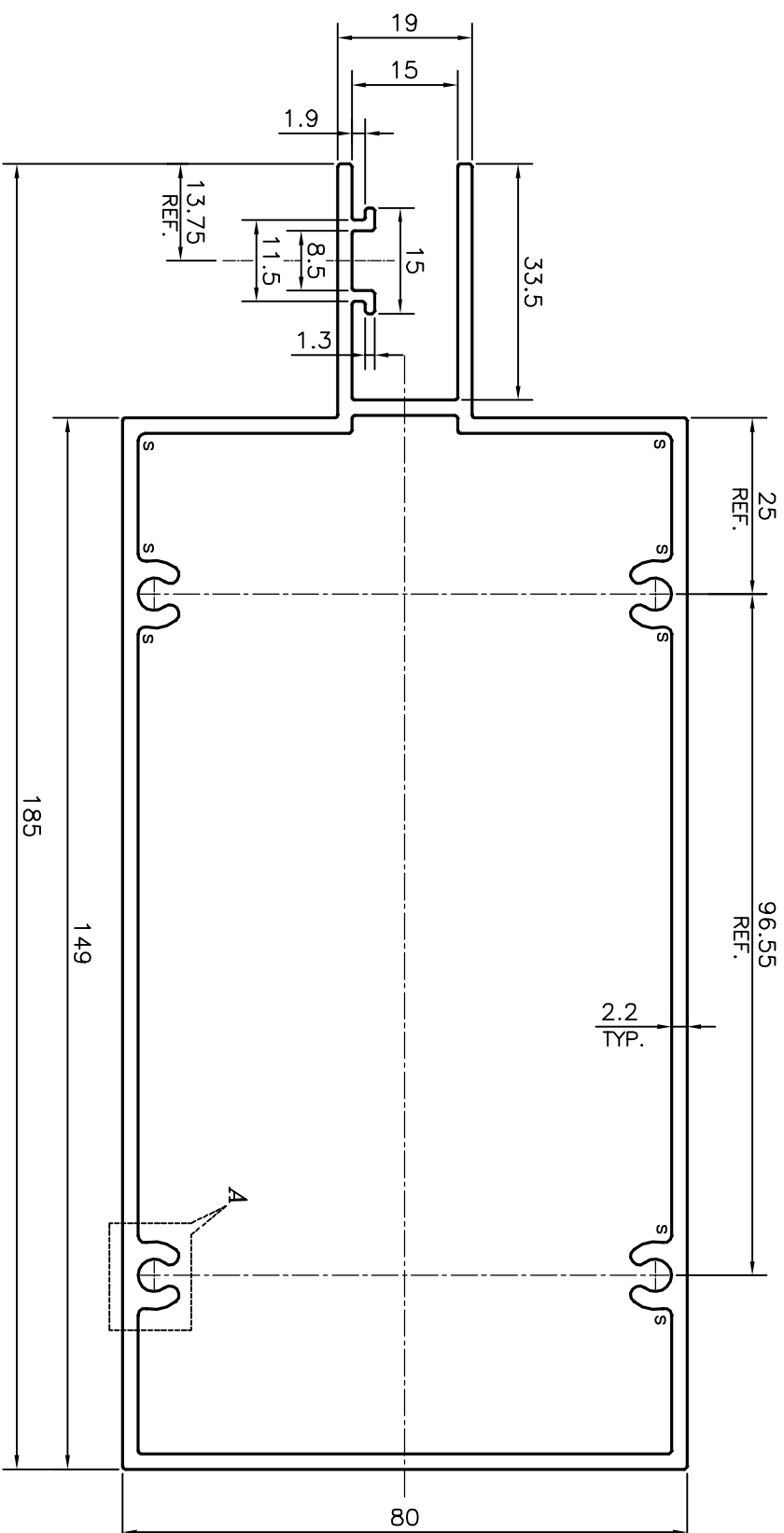


P-21102

E1342

E1363



S = RADIUS 1.0 mm. (10 PLACES)

DATED :- 13-08-2020
 REVISED DRAWING:-
 DRAWING MODIFIED AS PER
 CUSTOMER REQUIREMENT.

TOLERANCES ON OVERALL WIDTHS & WIDTHS ACROSS FLATS OF BARS, & REGULAR SECTIONS

UPTO 6.40mm - ±0.20	UPTO 32.0mm - ±0.38	UPTO 120.0mm - ±0.85
UPTO 10.0mm - ±0.23	UPTO 50.0mm - ±0.46	UPTO 160.0mm - ±1.02
UPTO 12.0mm - ±0.25	UPTO 60.0mm - ±0.53	UPTO 200.0mm - ±1.14
UPTO 16.0mm - ±0.28	UPTO 80.0mm - ±0.69	UPTO 250.0mm - ±1.40
UPTO 25.0mm - ±0.30	UPTO 100.0mm - ±0.75	UPTO 300.0mm - ±1.65

<p>SYMBOL OF QUALITY AN ISO 9001 COMPANY</p>	<p>JINDAL ALUMINIUM LTD. BANGALORE-560073 (INDIA)</p>	DRAWN	NAME	DATE
		CHECKED	PARVESH	13-08-2020
<p>1. ALL DIMENSIONS ARE IN mm. 2. ROUND OFF ALL SHARP CORNERS WITH 0.4 mm. 3. TOLERANCES WILL BE AS PER IS:6477-1983, UNLESS OTHERWISE SPECIFIED</p>		APPROVED	B.NATARAJA	18-08-2020
PARTY'S NAME	ALUFIT (INDIA) PRIVATE LIMITED, BANGALORE	SCALE	1:1	
PARTY'S DRAWING No.	AS PER AUTOCAD DRAWING-AL-03	AREA mm ²	1270.209	
ALLOY & TEMPER	6063 T6	PERIMETER mm.	612.68	
DESCRIPTION	CURTAIN WALL SECTION-MID TRANSOM	WEIGHT kg/m	3.430	
		DRAWING No.	SECTION No.	
		P-21102	-	
		E1342	E1342	

DETAIL OF "A"
 SCALE 3:1

SCALE:- 0.5:1