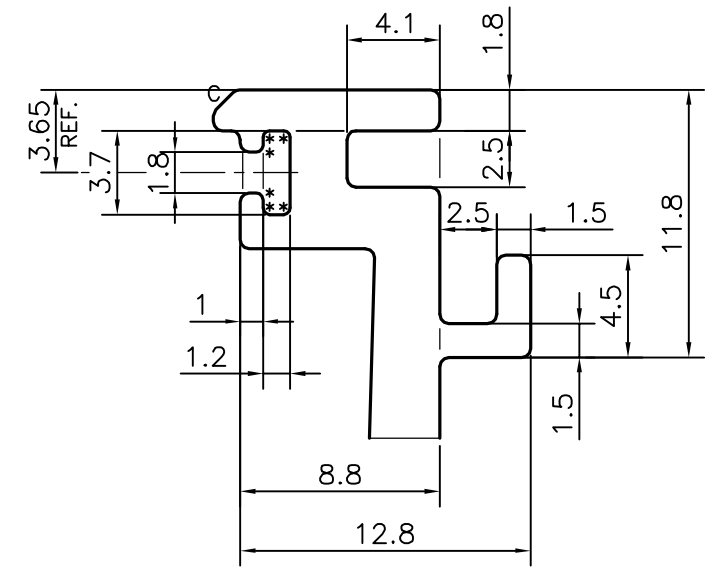
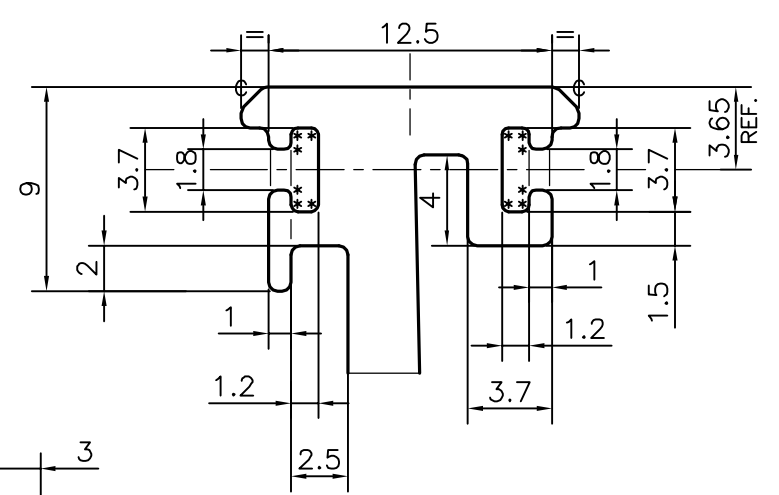


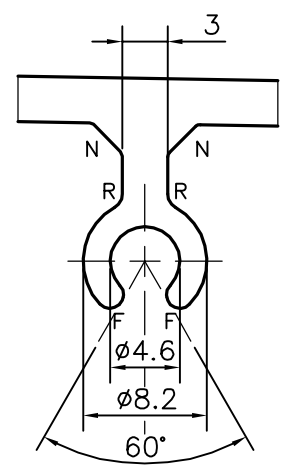
P-21108  
E1347



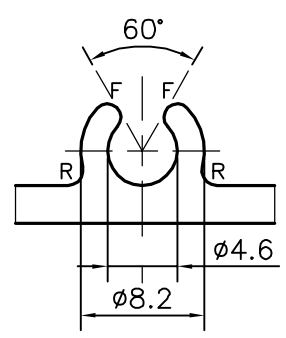
SCALE: - 3:1  
DETAIL OF "A"



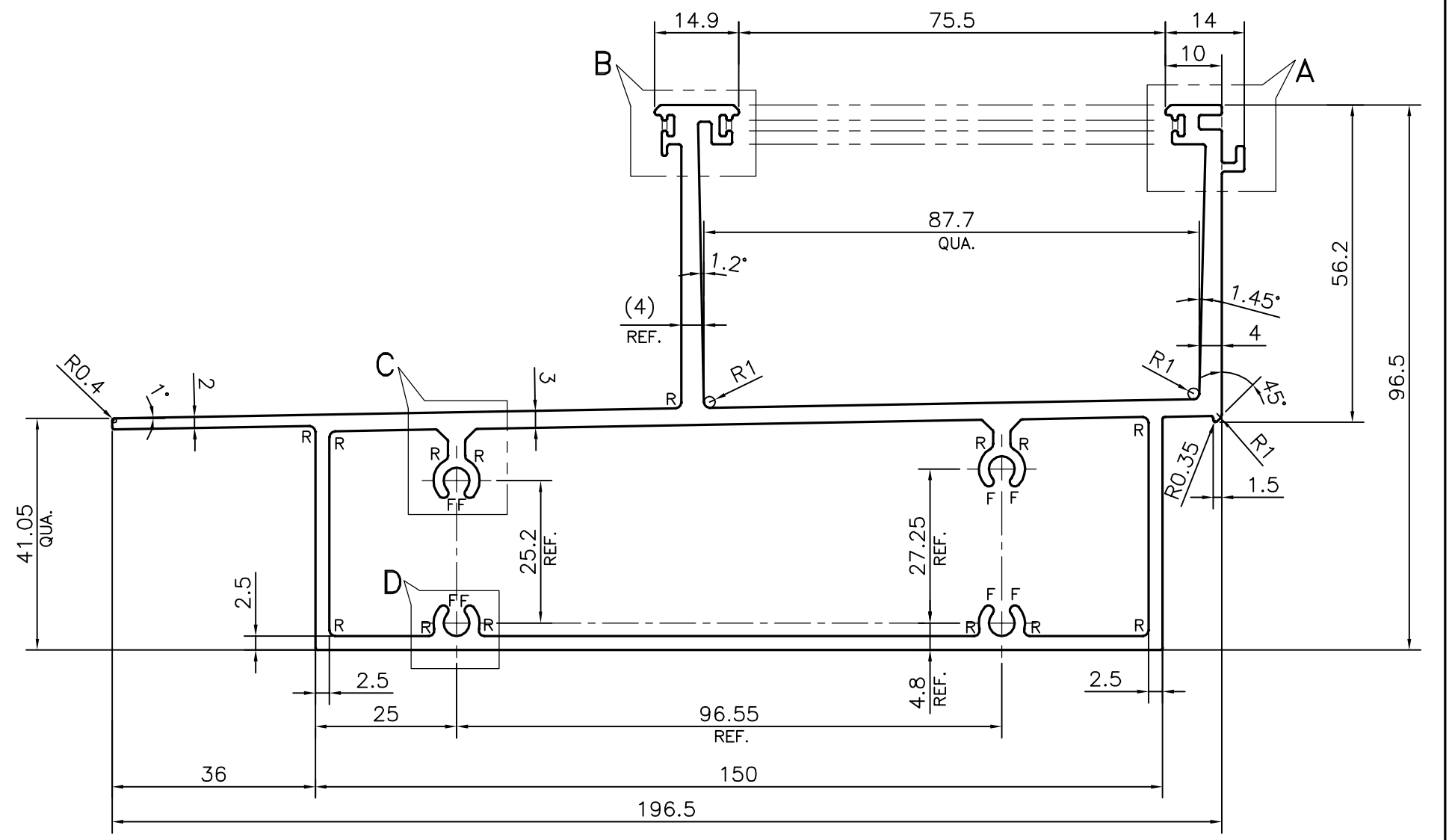
SCALE: - 3:1  
DETAIL OF "B"



DETAIL OF "C"  
SCALE: - 2:1

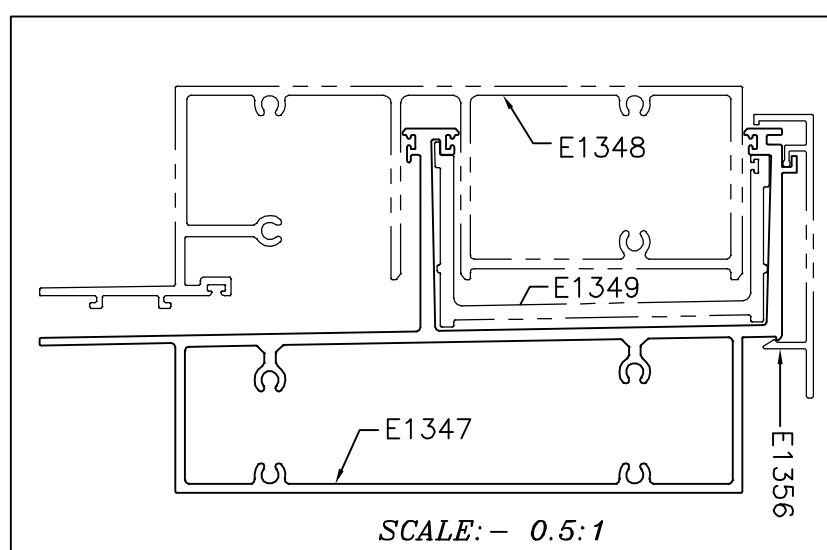


DETAIL OF "D"  
SCALE: - 2:1



SCALE: - 1:1

- C= CHAMFER 1x45° (4 PLACES)
- N= CHAMFER 2x45° (4 PLACES)
- F=FULL RADIUS (8 PLACES)
- R= RADIUS R1 (14 PLACES)
- \*=RADIUS 0.3 (18 PLACES)



SCALE: - 0.5:1

TOLERANCES ON OVERALL DIMENSIONS OF HOLLOW SECTIONS

UPTO 20.0mm - ±0.30	UPTO 80.0mm - ±0.70	UPTO 180.0mm - ±1.27
UPTO 30.0mm - ±0.38	UPTO 100.0mm - ±0.80	UPTO 200.0mm - ±1.40
UPTO 40.0mm - ±0.45	UPTO 120.0mm - ±0.90	UPTO 225.0mm - ±1.52
UPTO 50.0mm - ±0.52	UPTO 140.0mm - ±1.00	
UPTO 60.0mm - ±0.60	UPTO 160.0mm - ±1.14	

- 1. STRAIGHTNESS=1.0mm/M
- 2. TWIST=1.0mm/M
- 3. ANGULARITY= ±1°
- 4. FLATNESS =0.007xWIDTH

<p>SYMBOL OF QUALITY AN ISO 9001 COMPANY</p>	<p><b>JINDAL ALUMINIUM LTD.</b> BANGALORE-560073 (INDIA)</p>	NAME	DATE
		DRAWN	DARPAN
		CHECKED	
		APPROVED	B.NATARAJA
		SCALE	1:1
		AREA mm <sup>2</sup>	1707.762
		PERIMETER mm.	774.139
		WEIGHT kg/m	4.611
		DRAWING No.	SECTION No.
		P-21108	-
		E1347	E1347
PARTY'S NAME	ALUFIT (INDIA) PRIVATE LIMITED., BANGALORE		
PARTY'S DRAWING No.	AS PER AUTOCAD DRAWING-AL-08		
ALLOY & TEMPER	6063 T6		
DESCRIPTION	CURTAIN WALL SECTION-HEAD TRANSOM		