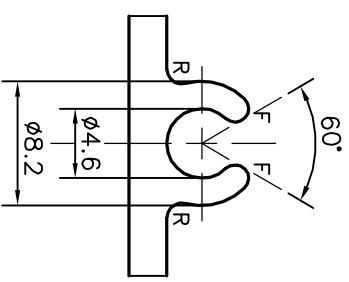
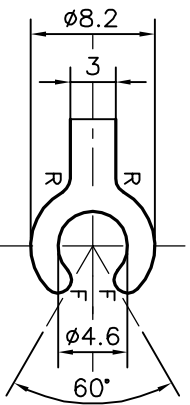


P-21109

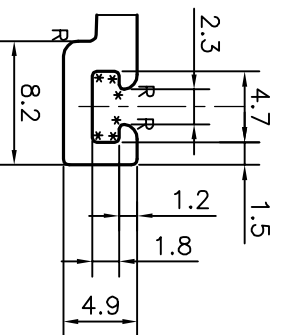
E1348



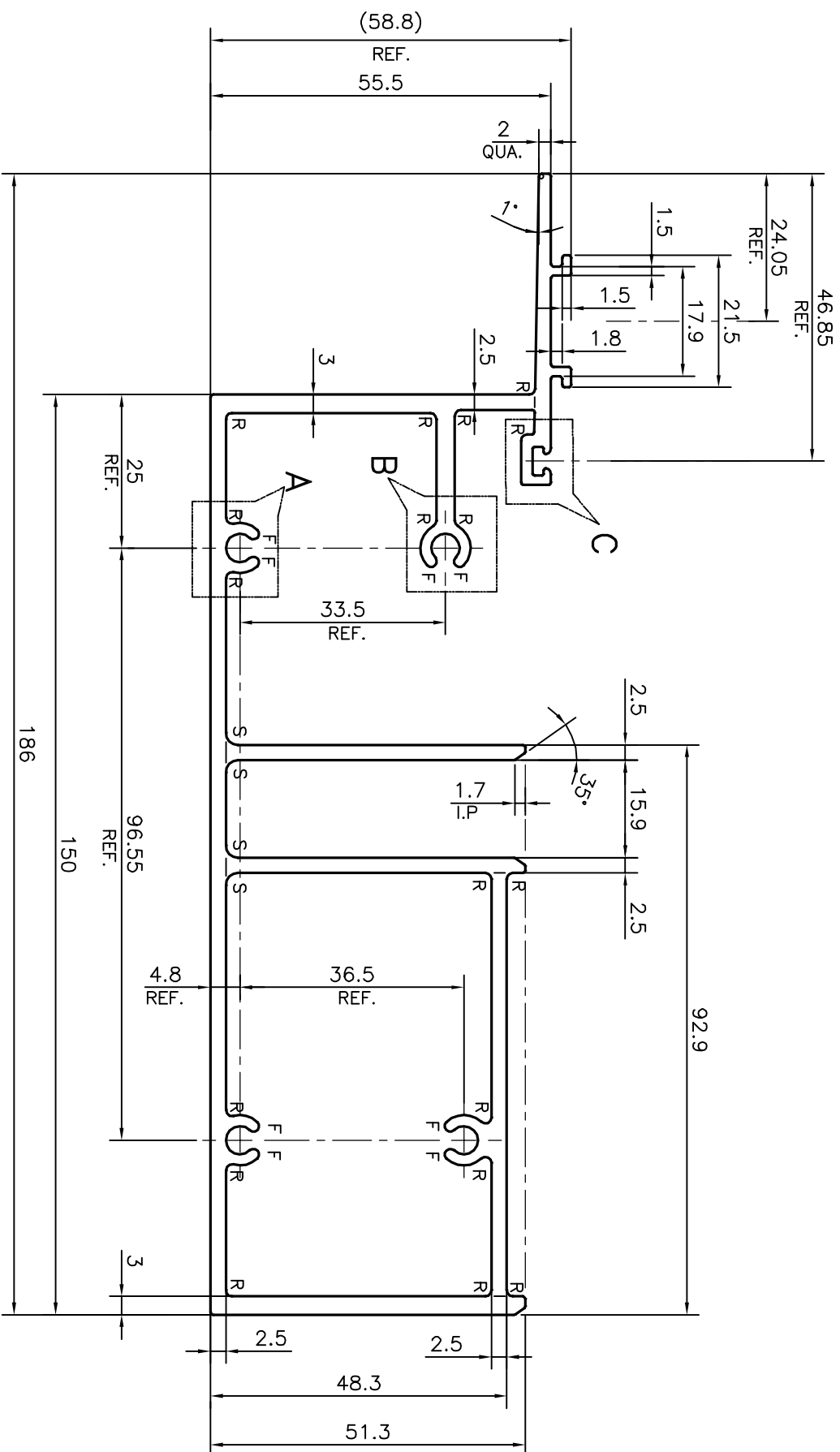
DETAIL OF "A"
SCALE: - 2:1



DETAIL OF "B"
SCALE: - 2:1



DETAIL OF "C"
SCALE: - 2:1



S = RADIUS R2 (4 PLACES)
F=FULL RADIUS (8 PLACES)
R= RADIUS R1 (20 PLACES)
*=RADIUS 0.3 (6 PLACES)

TOLERANCES ON OVERALL DIMENSIONS OF HOLLOW SECTIONS

UPTO 20.0mm - ±0.30	UPTO 80.0mm - ±0.70	UPTO 180.0mm - ±1.27
UPTO 30.0mm - ±0.38	UPTO 100.0mm - ±0.80	UPTO 200.0mm - ±1.40
UPTO 40.0mm - ±0.45	UPTO 120.0mm - ±0.90	UPTO 225.0mm - ±1.52
UPTO 50.0mm - ±0.52	UPTO 140.0mm - ±1.00	
UPTO 60.0mm - ±0.60	UPTO 160.0mm - ±1.14	

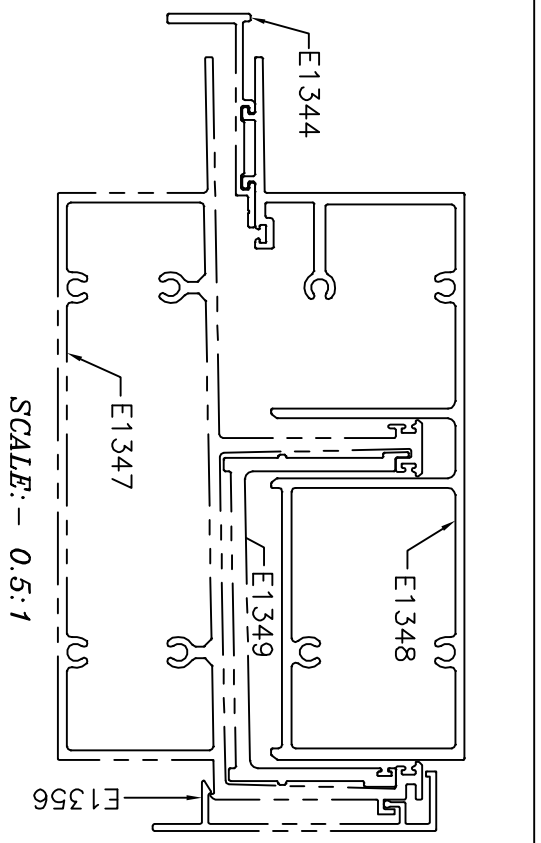


JINDAL ALUMINIUM LTD.
BANGALORE-560073 (INDIA)

SYMBOL OF QUALITY
AN ISO 9001 COMPANY

1. ALL DIMENSIONS ARE IN mm.
2. ROUND OFF ALL SHARP CORNERS WITH 0.40 mm.
3. TOLERANCES WILL BE AS PER IS:6477-1983 UNLESS OTHERWISE SPECIFIED

PARTY'S NAME	ALUFIT (INDIA) PRIVATE LIMITED., BANGALORE	DRAWING No.	P-21109	SECTION No.	-
PARTY'S DRAWING No.	AS PER AUTOCAD DRAWING-AL-06		E1348		E1348
ALLOY & TEMPER	6063 T6				
DESCRIPTION	CURTAIN WALL SECTION-SILL TRANSOM				



SCALE: - 0.5:1

1. STRAIGHTNESS=1.0mm/M	
2. TWIST=1.0mm/M	
3. ANGULARITY= ±1°	
4. FLATNESS =0.007xWIDTH	

NAME	DATE
DRAWN	23-06-2020
CHECKED	
APPROVED	10-08-2020
SCALE	1:1
AREA mm ²	1389.554
PERIMETER mm.	813.974
WEIGHT kg/m	3.752