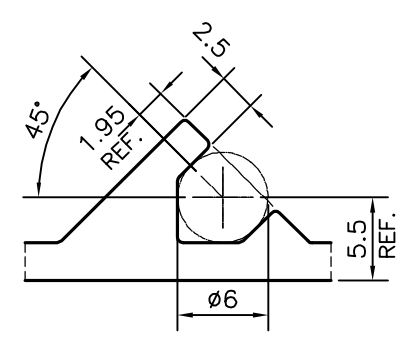
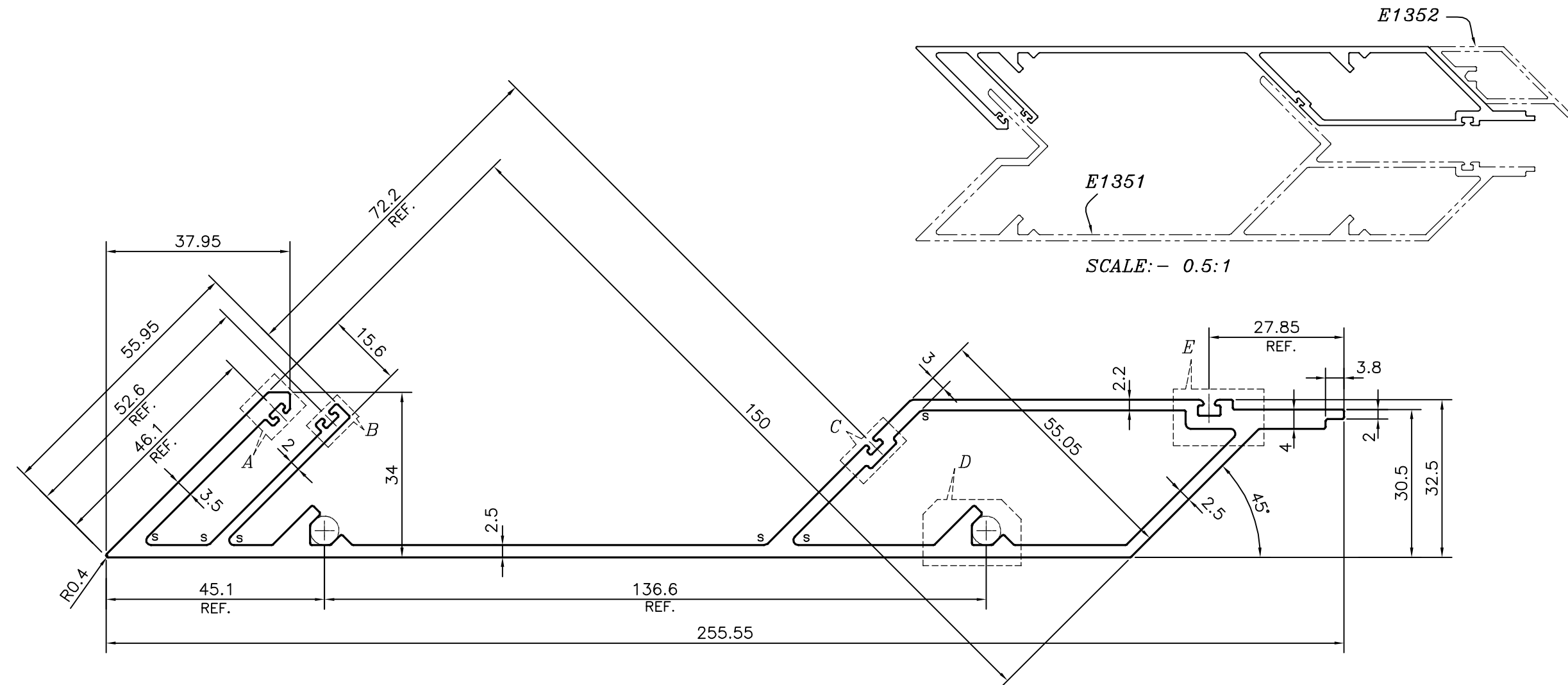
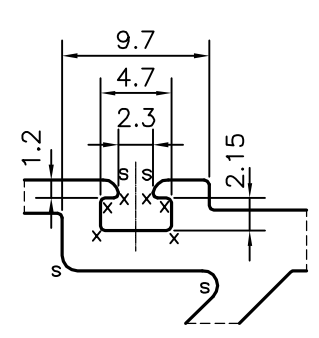


P-21206  
E1350

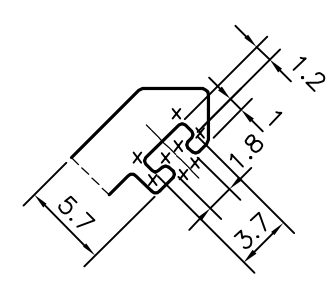


DETAIL OF "D"  
SCALE 2:1

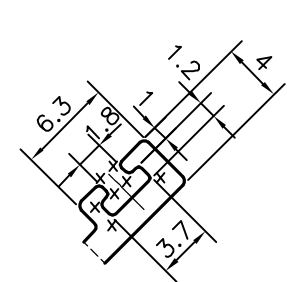


DETAIL OF "E"  
SCALE 2:1

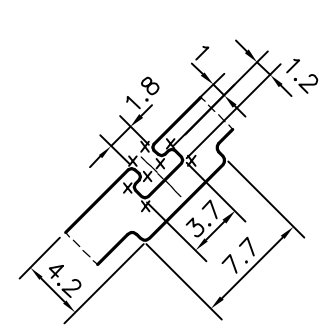
X = RADIUS 0.3 mm. (30 PLACES)  
S = RADIUS 1.0 mm. (7 PLACES)




DETAIL OF "A"  
SCALE 2:1



DETAIL OF "B"  
SCALE 2:1



DETAIL OF "C"  
SCALE 2:1

TOLERANCES ON OVERALL WIDTHS & WIDTHS ACROSS FLATS OF BARS, & REGULAR SECTIONS			
UPTO 6.40mm - ±0.20	UPTO 32.0mm - ±0.38	UPTO 120.0mm - ±0.85	<b>1. STRAIGHTNESS=1.0mm/M</b> <b>2. TWIST=1.0mm/M</b> <b>3. ANGULARITY= ±1°</b> <b>4. FLATNESS =0.007xWIDTH</b>
UPTO 10.0mm - ±0.23	UPTO 50.0mm - ±0.46	UPTO 160.0mm - ±1.02	
UPTO 12.0mm - ±0.25	UPTO 60.0mm - ±0.53	UPTO 200.0mm - ±1.14	
UPTO 16.0mm - ±0.28	UPTO 80.0mm - ±0.69	UPTO 250.0mm - ±1.40	
UPTO 25.0mm - ±0.30	UPTO 100.0mm - ±0.75	UPTO 300.0mm - ±1.65	
 SYMBOL OF QUALITY AN ISO 9001 COMPANY		<b>JINDAL ALUMINIUM LTD.</b> <b>BANGALORE-560073 (INDIA)</b>	
1. ALL DIMENSIONS ARE IN mm. 2. ROUND OFF ALL SHARP CORNERS WITH 0.4 mm. 3. TOLERANCES WILL BE AS PER IS:6477-1983 , UNLESS OTHERWISE SPECIFIED		NAME <b>PARVESH</b>	DATE <b>23-07-2020</b>
PARTY'S NAME <b>ALUFIT (INDIA) PRIVATE LIMITED, BANGALORE</b>		CHECKED APPROVED <b>B.NATARAJA</b>	DATE <b>10-08-2020</b>
PARTY'S DRAWING No. <b>AS PER AUTOCAD DRAWING-AL-18</b>		SCALE <b>1:1</b>	AREA mm <sup>2</sup> <b>1323.242</b>
ALLOY & TEMPER <b>6063 T6</b>		PERIMETER mm. <b>752.274</b>	WEIGHT kg/m <b>3.573</b>
DESCRIPTION <b>CURTAIN WALL SECTION-FEMALE CORNER MULLION</b>		DRAWING No. <b>P-21206</b> <b>E1350</b>	SECTION No. <b>-</b> <b>E1350</b>