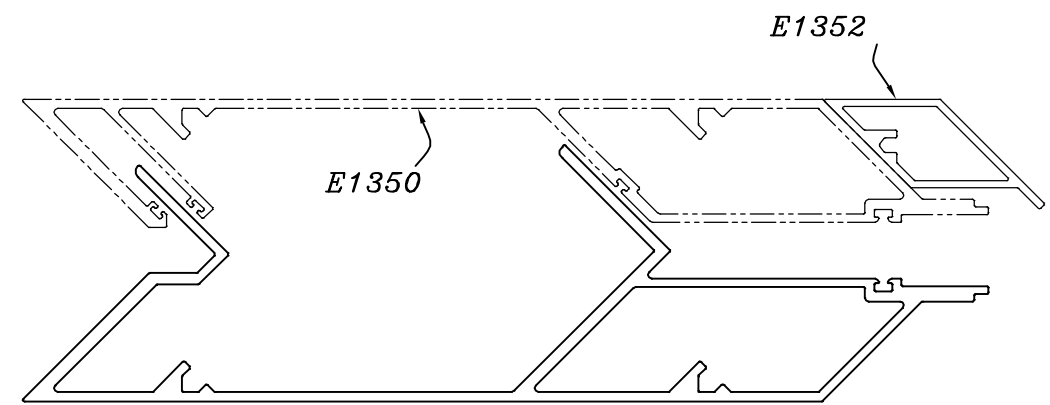
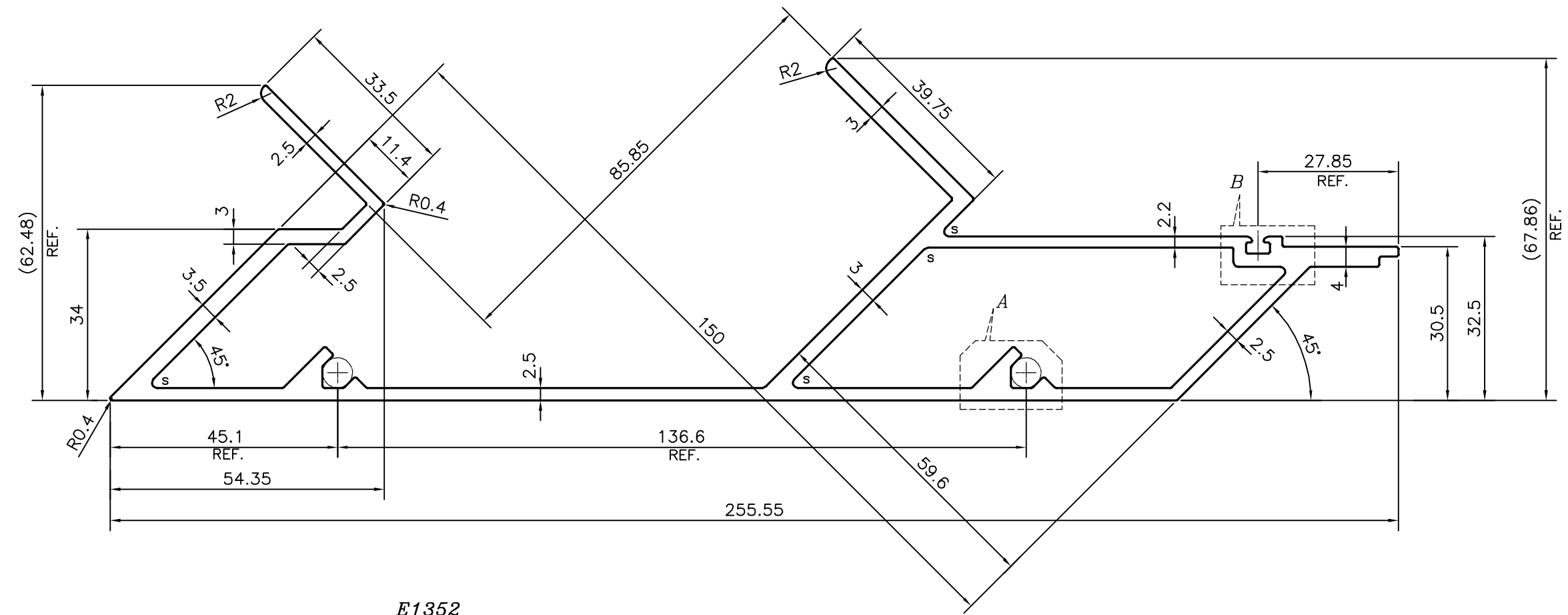
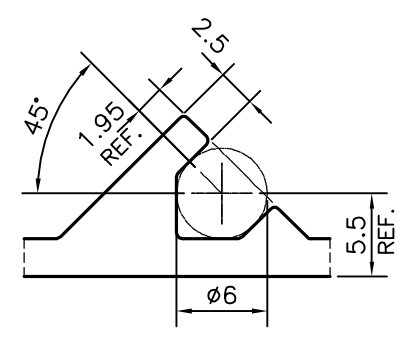


P-21207
E1351

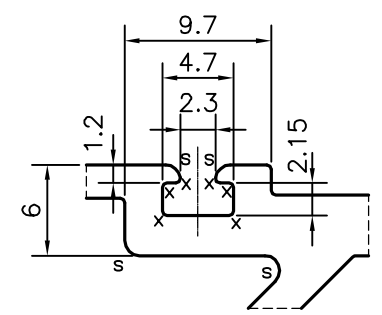


SCALE: - 0.5:1

X = RADIUS 0.3 mm. (6 PLACES)
S = RADIUS 1.0 mm. (6 PLACES)




DETAIL OF "A"
SCALE 2:1



DETAIL OF "B"
SCALE 2:1

TOLERANCES ON OVERALL WIDTHS & WIDTHS ACROSS FLATS OF BARS, & REGULAR SECTIONS			
UPTO 6.40mm - ±0.20	UPTO 32.0mm - ±0.38	UPTO 120.0mm - ±0.85	1. STRAIGHTNESS=1.0mm/M 2. TWIST=1.0mm/M 3. ANGULARITY= ±1° 4. FLATNESS =0.007xWIDTH
UPTO 10.0mm - ±0.23	UPTO 50.0mm - ±0.46	UPTO 160.0mm - ±1.02	
UPTO 12.0mm - ±0.25	UPTO 60.0mm - ±0.53	UPTO 200.0mm - ±1.14	
UPTO 16.0mm - ±0.28	UPTO 80.0mm - ±0.69	UPTO 250.0mm - ±1.40	
UPTO 25.0mm - ±0.30	UPTO 100.0mm - ±0.75	UPTO 300.0mm - ±1.65	

 SYMBOL OF QUALITY AN ISO 9001 COMPANY	JINDAL ALUMINIUM LTD. BANGALORE-560073 (INDIA)	NAME	DATE
		DRAWN	PARVESH 22-07-2020
1. ALL DIMENSIONS ARE IN mm. 2. ROUND OFF ALL SHARP CORNERS WITH 0.4 mm. 3. TOLERANCES WILL BE AS PER IS:6477-1983, UNLESS OTHERWISE SPECIFIED		CHECKED	
		APPROVED	B.NATARAJA 10-08-2020
PARTY'S NAME ALUFIT (INDIA) PRIVATE LIMITED, BANGALORE		SCALE	1:1
		AREA mm ²	1520.499
PARTY'S DRAWING No. AS PER AUTOCAD DRAWING-AL-19		PERIMETER mm.	842.905
		WEIGHT kg/m	4.105
ALLOY & TEMPER 6063 T6		DRAWING No.	SECTION No.
		P-21207	-
DESCRIPTION CURTAIN WALL SECTION-MALE CORNER MULLION		E1351	E1351