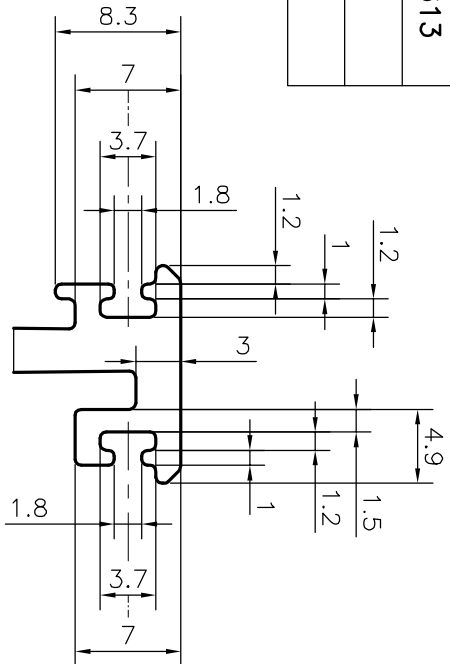
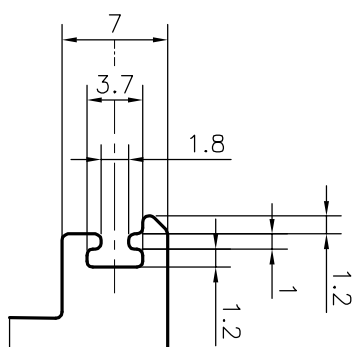


P-21613

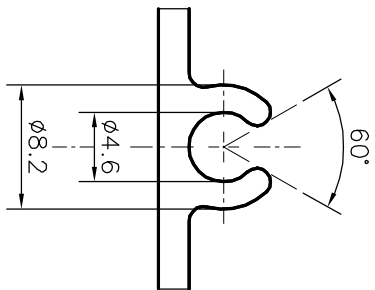
E1401



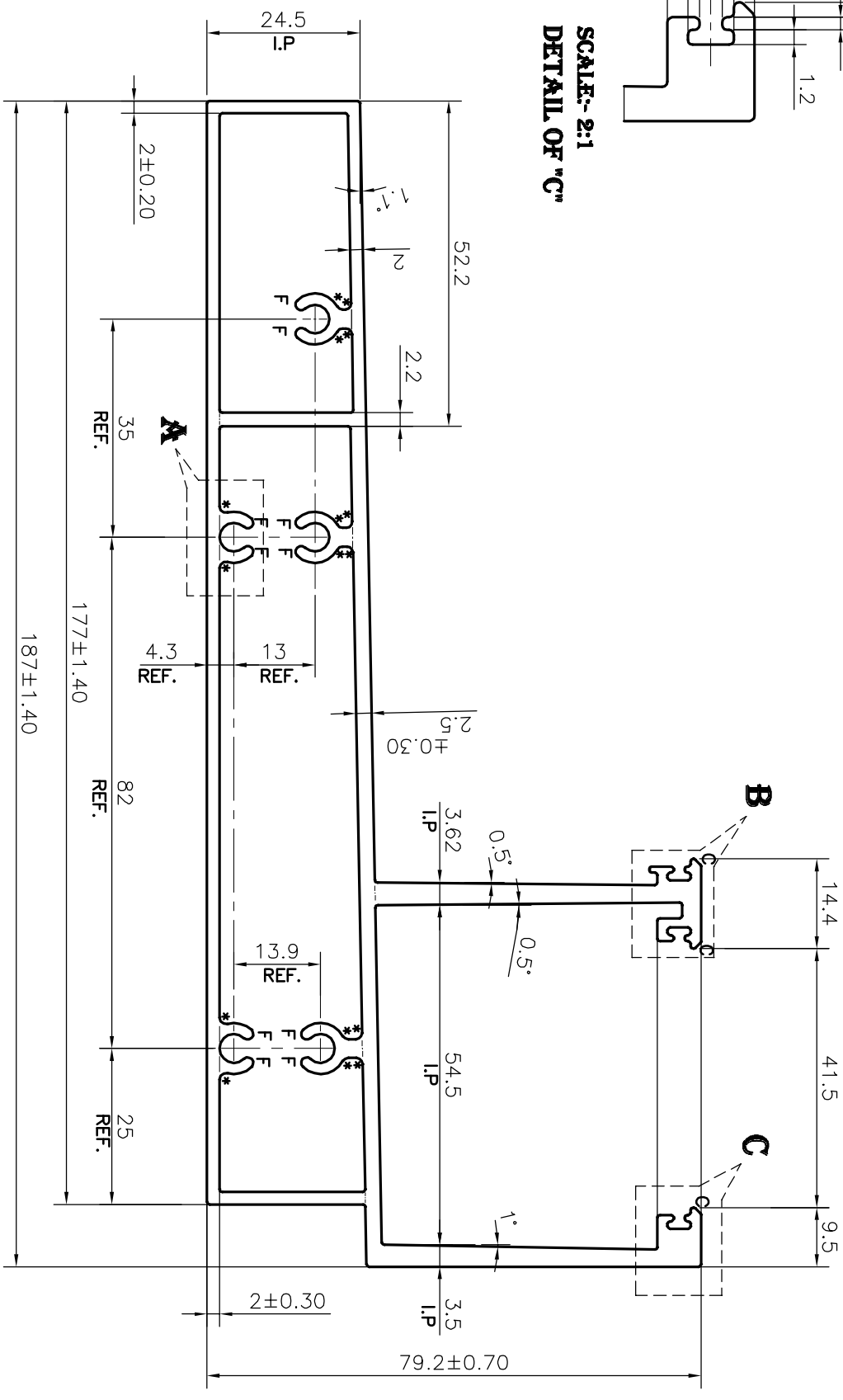
SCALE:- 2:1  
DETAIL OF "B"



SCALE:- 2:1  
DETAIL OF "C"



SCALE:- 2:1  
DETAIL OF "A"



**WEIGHT RANGE (kg/m) - 3.613 - 4.415 (APPROX.)**

**FINISH:- POWDER COATING**

F = FULL RADIUS (10 PLACES)  
C = 1x45° CHAMFER (3 PLACES)  
\* = 1mm RADIUS (16 PLACES)

TOLERANCES ON OVERALL DIMENSIONS OF HOLLOW SECTIONS

UPTO 20.0mm - ±0.30	UPTO 80.0mm - ±0.70	UPTO 180.0mm - ±1.27
UPTO 30.0mm - ±0.38	UPTO 100.0mm - ±0.80	UPTO 200.0mm - ±1.40
UPTO 40.0mm - ±0.45	UPTO 120.0mm - ±0.90	UPTO 225.0mm - ±1.52
UPTO 50.0mm - ±0.52	UPTO 140.0mm - ±1.00	
UPTO 60.0mm - ±0.60	UPTO 160.0mm - ±1.14	

 SYMBOL OF QUALITY AN ISO 9001 COMPANY <b>JINDAL ALUMINIUM LTD.</b> BANGALORE - 560073 (INDIA)	DRAWN	NAME	DATE
	CHECKED	DARPAN	01-10-2020
	APPROVED	B.NATARAJA	08-10-2020

1. ALL DIMENSIONS ARE IN mm.	SCALE	1:1
2. ROUND OFF ALL SHARP CORNERS WITH 0.40 mm.	AREA mm <sup>2</sup>	1486.607
3. TOLERANCES WILL BE AS PER IS:6477-1983 UNLESS OTHERWISE SPECIFIED	PERIMETER mm.	693.358
	WEIGHT kg/m	4.014

PARTY'S NAME	ALUFIT (INDIA) PVT. LTD., BANGALORE	DRAWING No.	P-21613	SECTION No.	-
PARTY'S DRAWING No.	AS PER AutocAD DRAWING		E1401		E1401
ALLOY & TEMPER	6063 T6				
DESCRIPTION	CURTAIN WALL SECTION				

