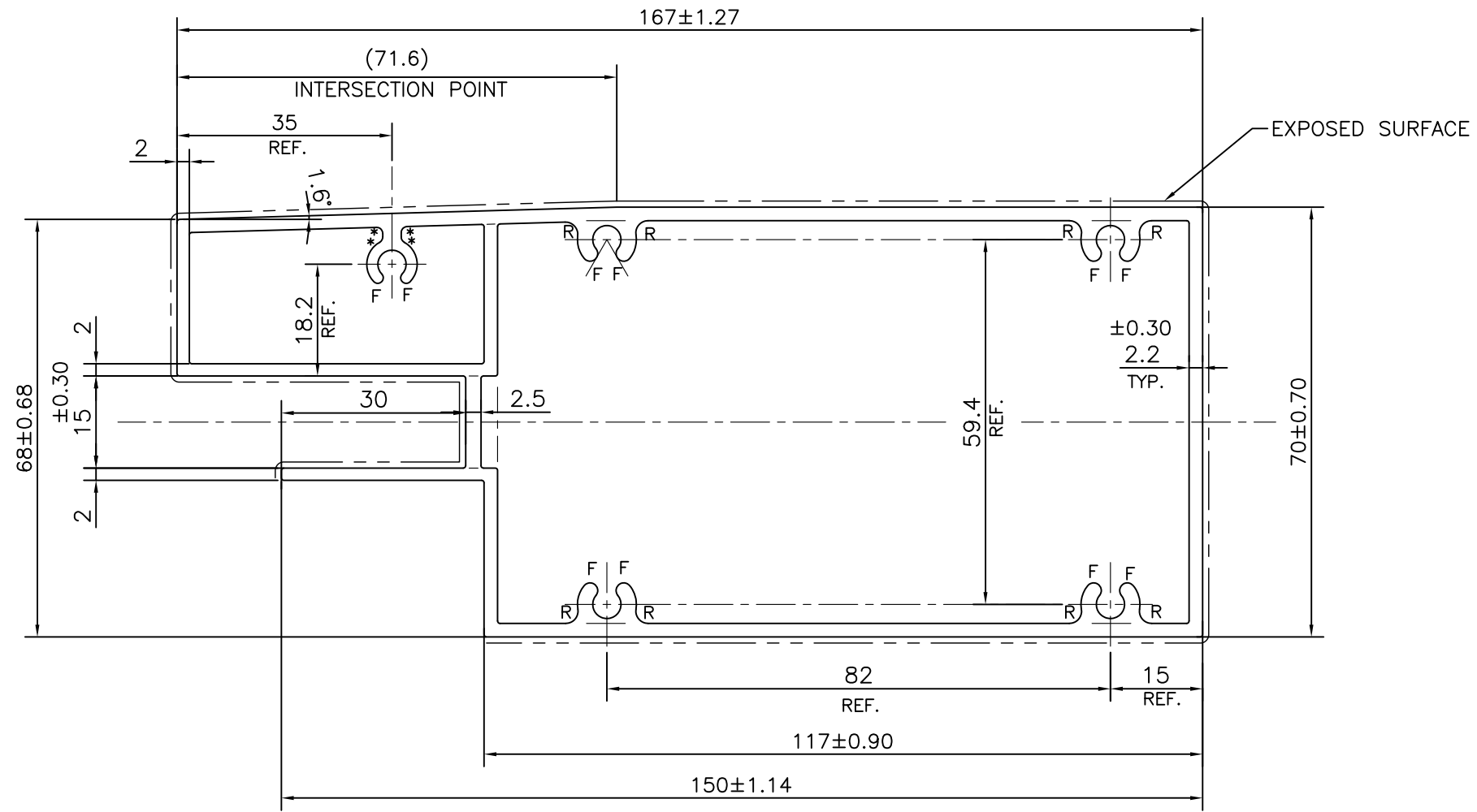


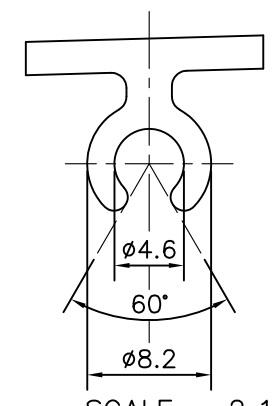
P-21614  
E1402



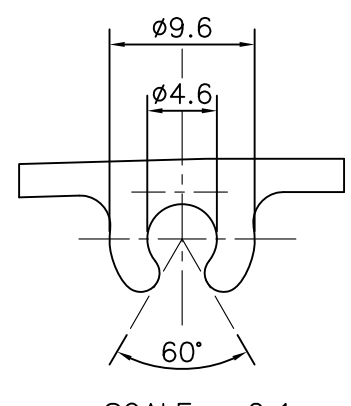
SCALE: - 1:1

**WEIGHT RANGE (kg/m) - 3.209 - 3.923 (APPROX.)**

R = 2mm RADIUS (8 PLACES)  
F = FULL RADIUS (10 PLACES)  
\* = 1mm RADIUS (4 PLACES)




SCALE: - 2:1  
DETAIL OF "A" 1-NOS



SCALE: - 2:1  
DETAIL OF "B" 4-NOS

**FINISH:- POWDER COATING**

TOLERANCES ON OVERALL DIMENSIONS OF HOLLOW SECTIONS			
UPTO 20.0mm - ±0.30	UPTO 80.0mm - ±0.70	UPTO 180.0mm - ±1.27	1. STRAIGHTNESS=1.0mm/M 2. TWIST=1.0mm/M 3. ANGULARITY= ±1° 4. FLATNESS =0.007xWIDTH
UPTO 30.0mm - ±0.38	UPTO 100.0mm - ±0.80	UPTO 200.0mm - ±1.40	
UPTO 40.0mm - ±0.45	UPTO 120.0mm - ±0.90	UPTO 225.0mm - ±1.52	
UPTO 50.0mm - ±0.52	UPTO 140.0mm - ±1.00		
UPTO 60.0mm - ±0.60	UPTO 160.0mm - ±1.14		

JINDAL ALUMINIUM LTD.		NAME		DATE	
 SYMBOL OF QUALITY AN ISO 9001 COMPANY	<b>BANGALORE-560073 (INDIA)</b>		DRAWN	DARPAN	01-10-2020
			CHECKED		
			APPROVED	B.NATARAJA	08-10-2020
			SCALE		1:1
1. ALL DIMENSIONS ARE IN mm. 2. ROUND OFF ALL SHARP CORNERS WITH 0.40 mm. 3. TOLERANCES WILL BE AS PER IS:6477-1983 UNLESS OTHERWISE SPECIFIED			AREA mm <sup>2</sup>	1320.62	
			PERIMETER mm.	530.322	
			WEIGHT kg/m	3.566	
PARTY'S NAME	ALUFIT (INDIA) PVT. LTD., BANGALORE		DRAWING No.	SECTION No.	
PARTY'S DRAWING No.	AS PER AutoCAD DRAWING		P-21614	-	
ALLOY & TEMPER	6063 T6		E1402	E1402	
DESCRIPTION	CURTAIN WALL SECTION				