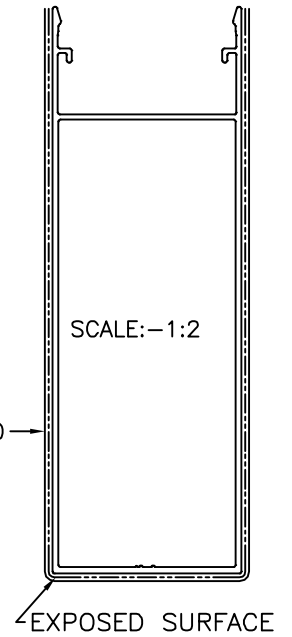
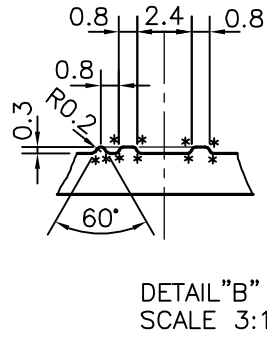
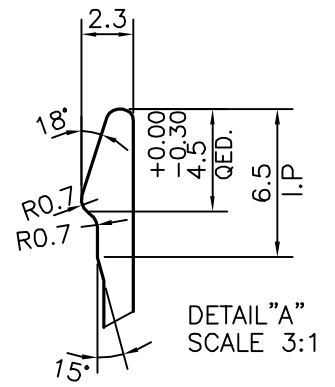
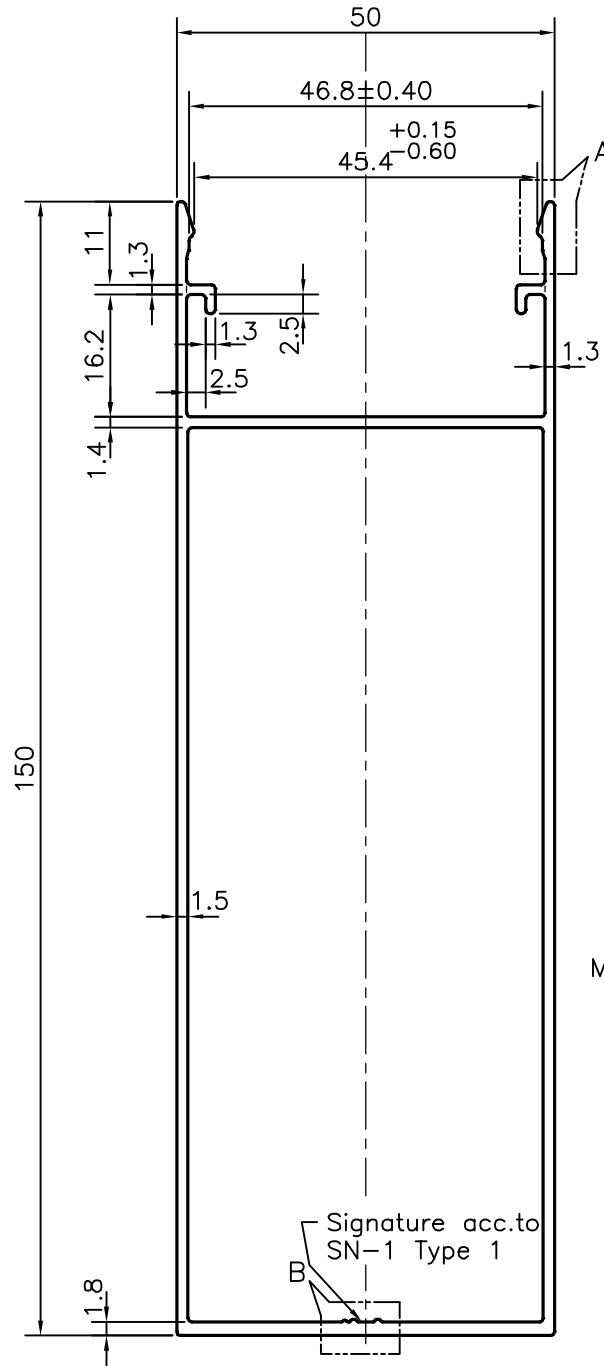
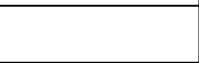


P-21350-1

E1416



Signature acc.to
SN-1 Type 1

*= RADIUS 0.20 (10 PLACES)
UNSPECIFIED RADIUS 0.50 mm



SYMBOL OF QUALITY
AN ISO 9001 COMPANY

JINDAL ALUMINIUM LTD.
BANGALORE-560073 (INDIA)

	NAME	DATE
DRAWN	J.P.KAUSHIK	15-09-2020
CHECKED		
APPROVED	B.NATARAJA	21-10-2020

1. ALL DIMENSIONS ARE IN mm.
2. ROUND OFF ALL SHARP CORNERS WITH 0.50 mm.
3. TOLERANCES WILL BE AS PER BS:EN-12020-2 , UNLESS OTHERWISE SPECIFIED

SCALE	1:1
AREA mm ²	611.815
PERIMETER mm.	478.601
WEIGHT kg/m	1.652
DRAWING No.	SECTION No.

PARTY'S NAME	SCHUECO INDIA PVT. LTD., BANGALORE
PARTY'S DRAWING No.	443150_FZ_0000
ALLOY & TEMPER	6060 T66
DESCRIPTION	COVER CAP SECTION

P-21350-1	-
E1416	E1416