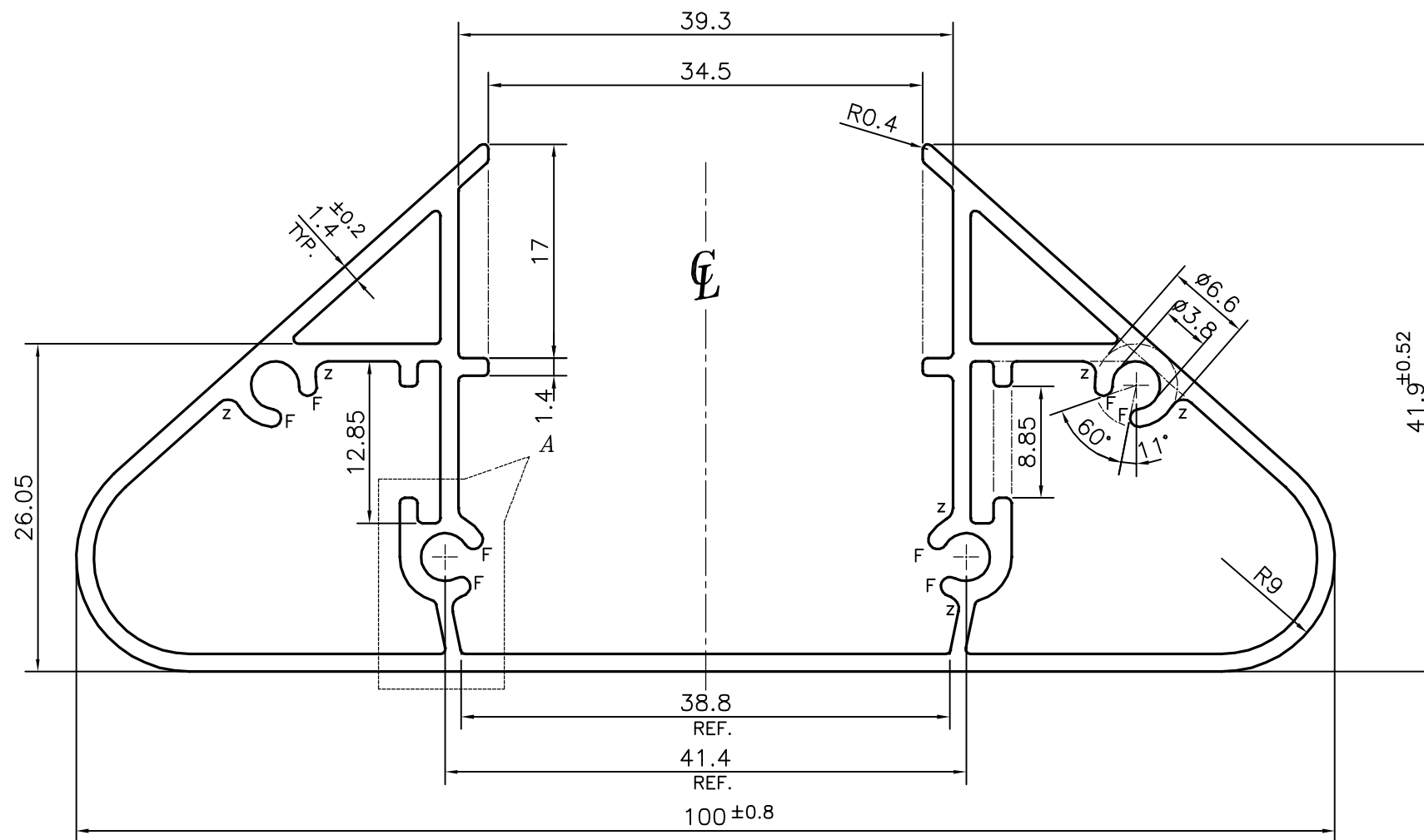


P-21627-1


E1418

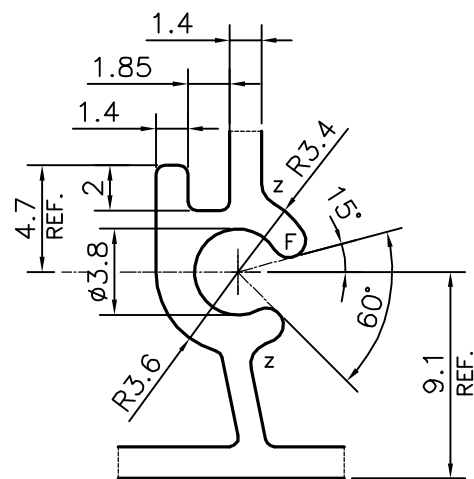


F = FULL RADIUS (8 PLACES)
Z = RADIUS 1 mm. (8 PLACES)

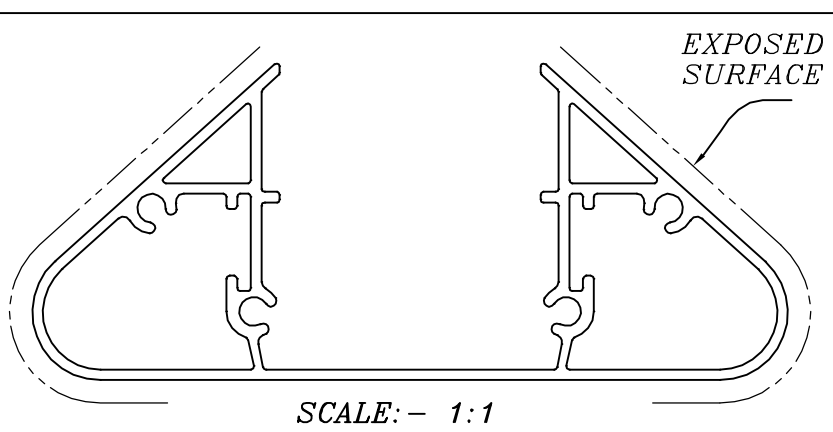
APPROXIMATE WEIGHT RANGE: -1.160 kg/M TO 1.460 kg/M

TOLERANCES ON OVERALL WIDTHS & WIDTHS ACROSS FLATS OF BARS, & REGULAR SECTIONS			
UPTO 6.40mm - ±0.20	UPTO 32.0mm - ±0.38	UPTO 120.0mm - ±0.85	1. STRAIGHTNESS=1.7mm/M 2. TWIST=1.7mm/M 3. ANGULARITY= ±2° 4. FLATNESS =0.007xWIDTH
UPTO 10.0mm - ±0.23	UPTO 50.0mm - ±0.46	UPTO 160.0mm - ±1.02	
UPTO 12.0mm - ±0.25	UPTO 60.0mm - ±0.53	UPTO 200.0mm - ±1.14	
UPTO 16.0mm - ±0.28	UPTO 80.0mm - ±0.69	UPTO 250.0mm - ±1.40	
UPTO 25.0mm - ±0.30	UPTO 100.0mm - ±0.75	UPTO 300.0mm - ±1.65	

 SYMBOL OF QUALITY AN ISO 9001 COMPANY	JINDAL ALUMINIUM LTD. BANGALORE-560073 (INDIA)	NAME	DATE
		DRAWN	PARVESH 17-10-2020
1. ALL DIMENSIONS ARE IN mm. 2. ROUND OFF ALL SHARP CORNERS WITH 0.40 mm. 3. TOLERANCES WILL BE AS PER IS:6477-1983 , UNLESS OTHERWISE SPECIFIED		CHECKED	
		APPROVED	B.NATARAJA 30-10-2020
PARTY'S NAME SURFACES, BANGALORE		SCALE	2:1
		AREA mm ²	485.291
PARTY'S DRAWING No. AS PER PROPOSAL DRAWING		PERIMETER mm.	354.89
		WEIGHT kg/m	1.310
ALLOY & TEMPER 6063 T6		DRAWING No.	SECTION No.
		P-21627-1	-
DESCRIPTION ARCHITECTURAL SECTION		E1418	E1418



DETAIL OF "A"
SCALE 3:1



SCALE: - 1:1