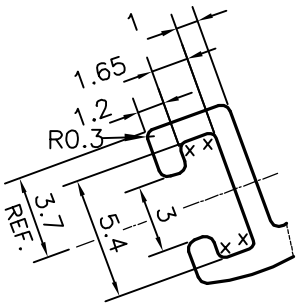
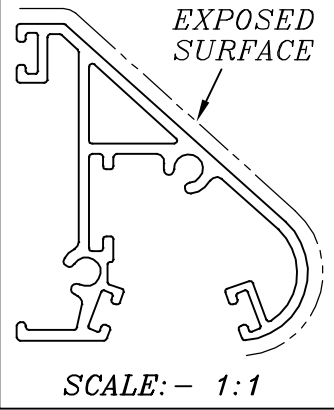
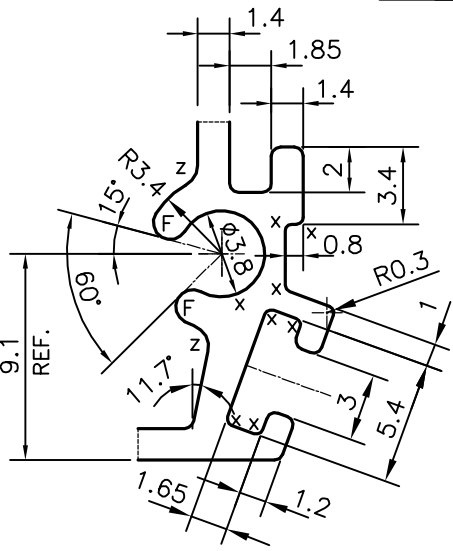
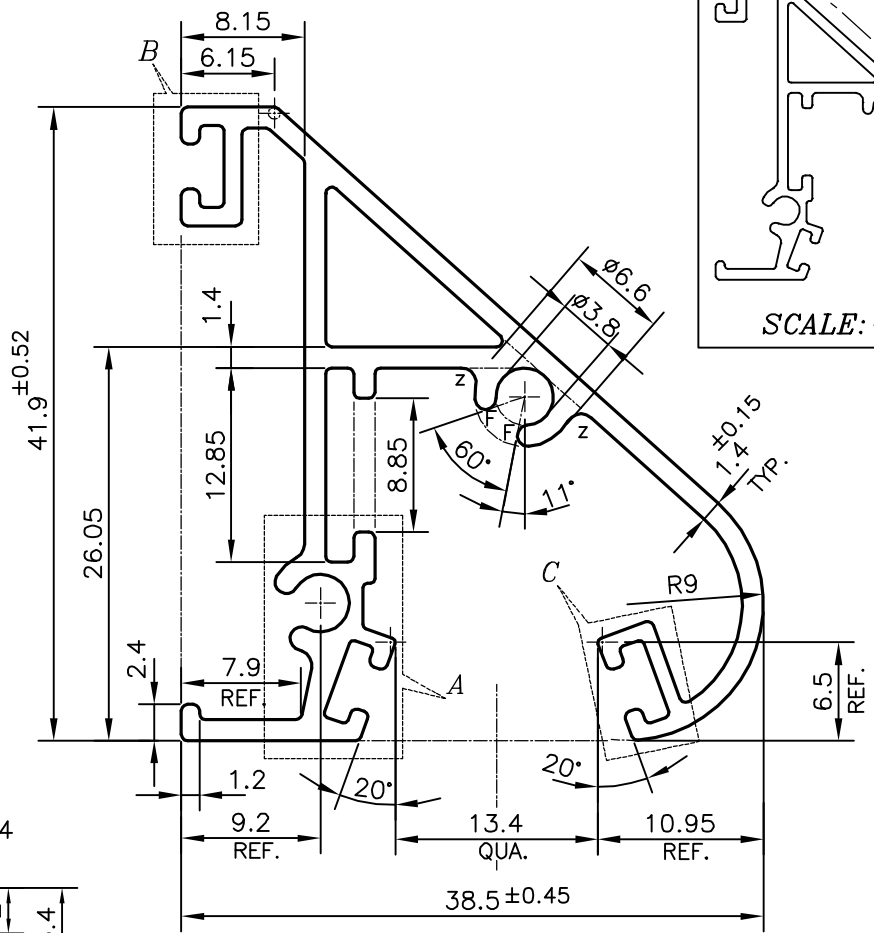


P-21629-1

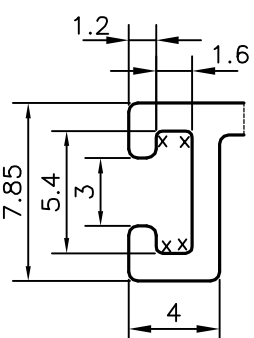
E1420



DETAIL OF "C"
SCALE 3:1



DETAIL OF "A"
SCALE 3:1



DETAIL OF "B"
SCALE 3:1

F = FULL RADIUS (4 PLACES)
Z = RADIUS 1 mm. (4 PLACES)
X = RADIUS 0.3 (17 PLACES)

APPROXIMATE WEIGHT RANGE: -0.573 kg/M TO 0.700 kg/M

TOLERANCES ON OVERALL WIDTHS & WIDTHS ACROSS FLATS OF BARS, & REGULAR SECTIONS

UPTO 6.40mm - ±0.20	UPTO 32.0mm - ±0.38	UPTO 120.0mm - ±0.85	1. STRAIGHTNESS=1.7mm/M 2. TWIST=1.7mm/M 3. ANGULARITY= ±2° 4. FLATNESS =0.007xWIDTH
UPTO 10.0mm - ±0.23	UPTO 50.0mm - ±0.46	UPTO 160.0mm - ±1.02	
UPTO 12.0mm - ±0.25	UPTO 60.0mm - ±0.53	UPTO 200.0mm - ±1.14	
UPTO 16.0mm - ±0.28	UPTO 80.0mm - ±0.69	UPTO 250.0mm - ±1.40	
UPTO 25.0mm - ±0.30	UPTO 100.0mm - ±0.75	UPTO 300.0mm - ±1.65	



SYMBOL OF QUALITY
AN ISO 9001 COMPANY

JINDAL ALUMINIUM LTD.
BANGALORE-560073 (INDIA)

	NAME	DATE
DRAWN	PARVESH	17-10-2020
CHECKED		
APPROVED	B.NATARAJA	30-10-2020
SCALE		2:1
AREA mm ²		235.765
PERIMETER mm.		294.09
WEIGHT kg/m		0.637
DRAWING No.	SECTION No.	
P-21629-1	-	
E1420	E1420	

- ALL DIMENSIONS ARE IN mm.
- ROUND OFF ALL SHARP CORNERS WITH 0.40 mm.
- TOLERANCES WILL BE AS PER,IS:6477-1983 UNLESS OTHERWISE SPECIFIED

PARTY'S NAME	SURFACES, BANGALORE
PARTY'S DRAWING No.	AS PER PROPOSAL DRAWING
ALLOY & TEMPER	6063 T6
DESCRIPTION	ARCHITECTURAL SECTION