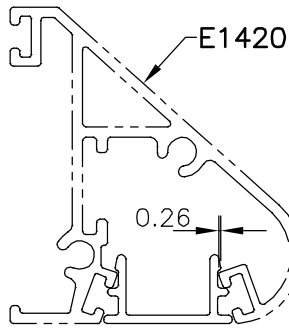


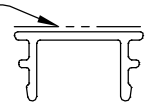
P-21791

E1436

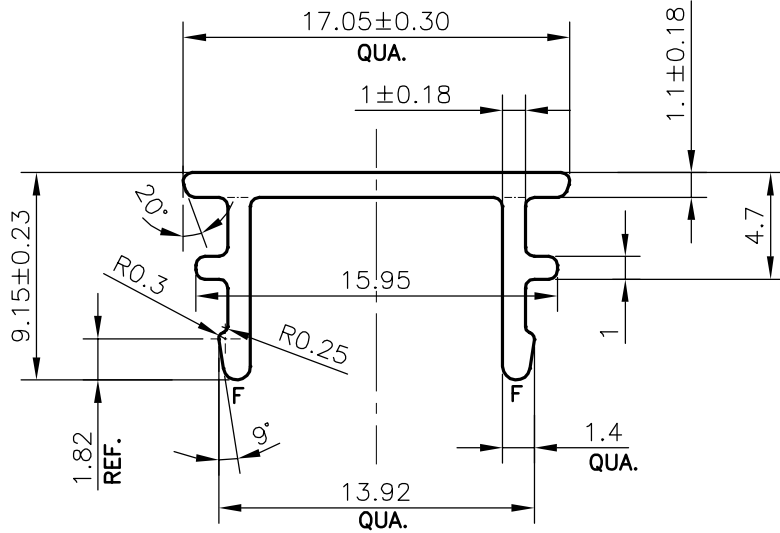


SCALE:- 1:1  
ASSEMBLY

EXPOSED SURFACE



SCALE:- 1:1



SCALE:- 3:1

**WEIGHT RANGE (kg/m) - 0.085 - 0.123 (APPROX.)**

**FINISH:- ANODIZING**

**F = FULL RADIUS (2 PLACE)**

TOLERANCES ON OVERALL WIDTHS & WIDTHS ACROSS FLATS OF BARS, & REGULAR SECTIONS

UPTO 6.40mm - ±0.20	UPTO 32.0mm - ±0.38	UPTO 120.0mm - ±0.85	1. STRAIGHTNESS=1.7mm/M 2. TWIST=1.7mm/M 3. ANGULARITY= ±2° 4. FLATNESS =0.007xWIDTH
UPTO 10.0mm - ±0.23	UPTO 50.0mm - ±0.46	UPTO 160.0mm - ±1.02	
UPTO 12.0mm - ±0.25	UPTO 60.0mm - ±0.53	UPTO 200.0mm - ±1.14	
UPTO 16.0mm - ±0.28	UPTO 80.0mm - ±0.69	UPTO 250.0mm - ±1.40	
UPTO 25.0mm - ±0.30	UPTO 100.0mm - ±0.75	UPTO 300.0mm - ±1.65	



SYMBOL OF QUALITY  
AN ISO 9001 COMPANY

**JINDAL ALUMINIUM LTD.**  
BANGALORE-560073 (INDIA)

	NAME	DATE
DRAWN	DARPAN	21-11-2020
CHECKED		
APPROVED	B.NATARAJA	05-12-2020

- ALL DIMENSIONS ARE IN mm.
- ROUND OFF ALL SHARP CORNERS WITH 0.40 mm.
- TOLERANCES WILL BE AS PER **IS:3965-1981**, UNLESS OTHERWISE SPECIFIED

SCALE	<b>3:1</b>
AREA mm <sup>2</sup>	<b>38.484</b>
PERIMETER mm.	<b>71.004</b>
WEIGHT kg/m	<b>0.104</b>

PARTY'S NAME	SURFACAES., BANGALORE
PARTY'S DRAWING No.	AS PER AutoCAD DRAWING
ALLOY & TEMPER	6063 T6
DESCRIPTION	MISC, SECTION

DRAWING No.	SECTION No.
P-21791	-
E1436	E1436