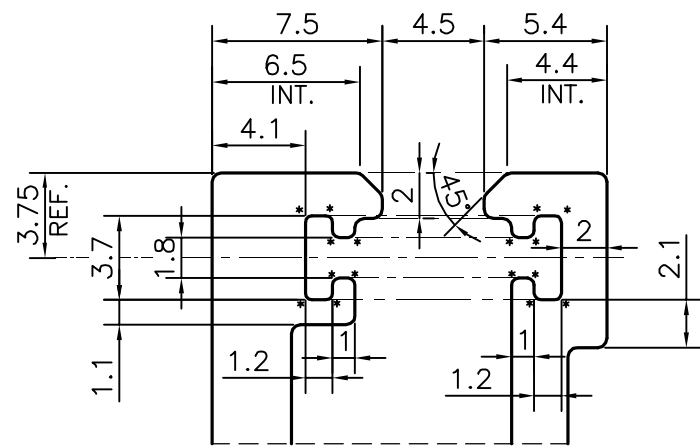
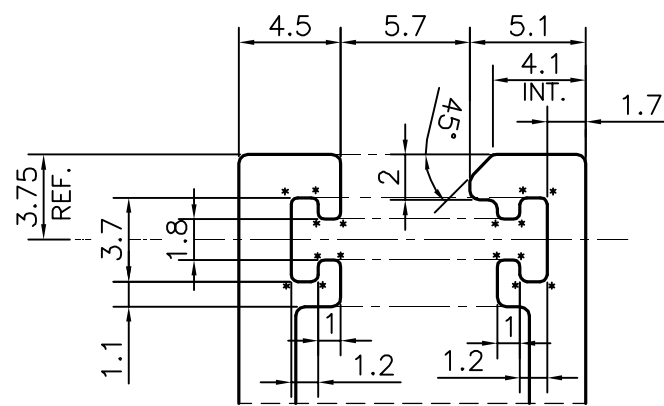


P-22716-2

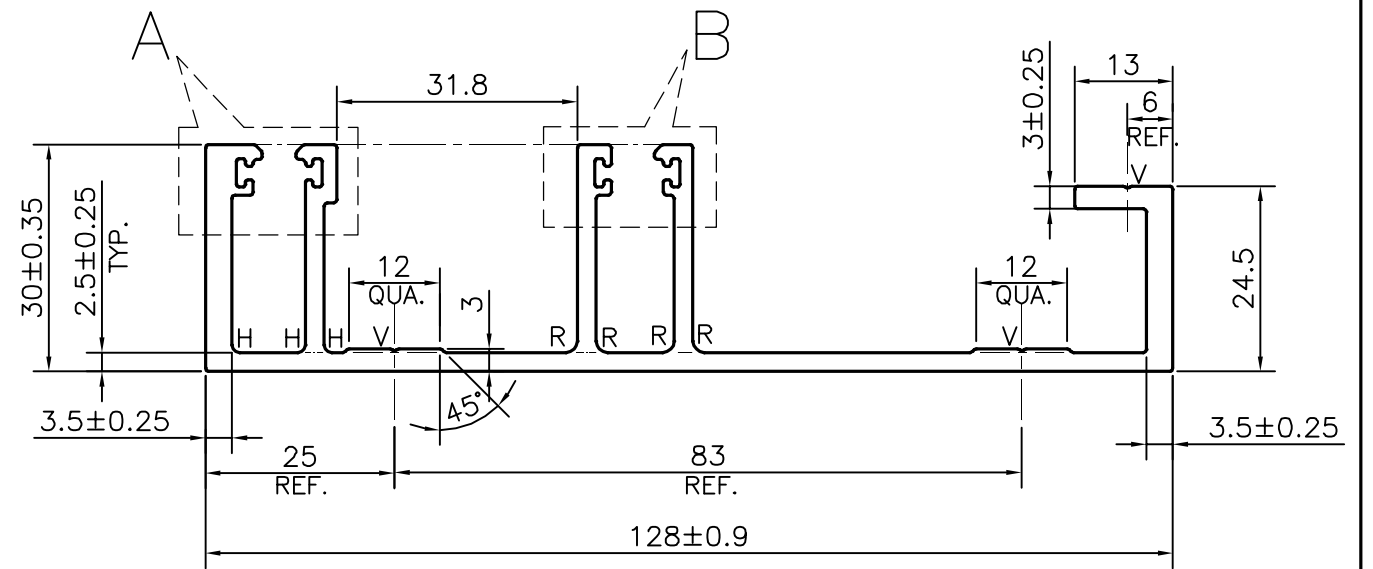
E1630



SCALE:- 3:1
DETAIL OF "A"



SCALE:- 3:1
DETAIL OF "B"

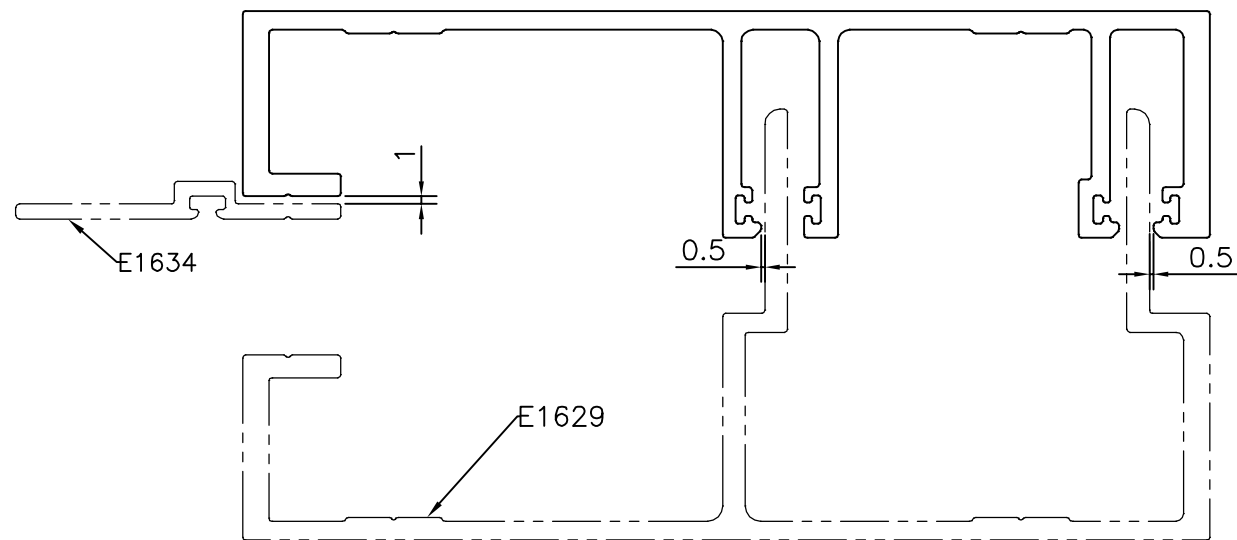


SCALE:-1:1

APPROXIMATE WEIGHT RANGE -1.891 - 2.311 kg/m

FINISH:- POWDER COATING

- * = 0.3 MM RADIUS (32 PLACES)
- R = 1.5 MM RADIUS (4 PLACES)
- H = 1 MM RADIUS (3 PLACES)
- V = V GROOVE 0.3x90° (3 PLACES)



ASSEMBLY
SCALE:-1:1

TOLERANCES ON OVERALL WIDTHS & WIDTHS ACROSS FLATS OF BARS, & REGULAR SECTIONS

UPTO 6.40mm - ±0.20	UPTO 32.0mm - ±0.38	UPTO 120.0mm - ±0.85
UPTO 10.0mm - ±0.23	UPTO 50.0mm - ±0.46	UPTO 160.0mm - ±1.02
UPTO 12.0mm - ±0.25	UPTO 60.0mm - ±0.53	UPTO 200.0mm - ±1.14
UPTO 16.0mm - ±0.28	UPTO 80.0mm - ±0.69	UPTO 250.0mm - ±1.40
UPTO 25.0mm - ±0.30	UPTO 100.0mm - ±0.75	UPTO 300.0mm - ±1.65

1. STRAIGHTNESS=0.75mm/M
2. TWIST=0.75mm/M
3. ANGULARITY= ±0.8°
4. FLATNESS =0.006xWIDTH

<p>SYMBOL OF QUALITY AN ISO 9001 COMPANY</p>	<p>JINDAL ALUMINIUM LTD. BANGALORE-560073 (INDIA)</p>	NAME	DATE
		DRAWN PUNITH	22-09-2021
		CHECKED	
		APPROVED B.NATARAJA	01-10-2021
<p>1. ALL DIMENSIONS ARE IN mm. 2. ROUND OFF ALL SHARP CORNERS WITH 0.40 mm. 3. TOLERANCES WILL BE AS PER IS:3965-1981 , UNLESS OTHERWISE SPECIFIED</p>		SCALE	1:1
		AREA mm ²	777.979
		PERIMETER mm.	586.748
		WEIGHT kg/m	2.101
PARTY'S NAME	ALUFIT (INDIA) PVT. LTD., BANGALORE	DRAWING No.	SECTION No.
PARTY'S DRAWING No.	HP-DIE-02	P-22716-2	-
ALLOY & TEMPER	6063 T6	E1630	E1630
DESCRIPTION	CURTAIN WALL SECTION-FEMALE MULLION		