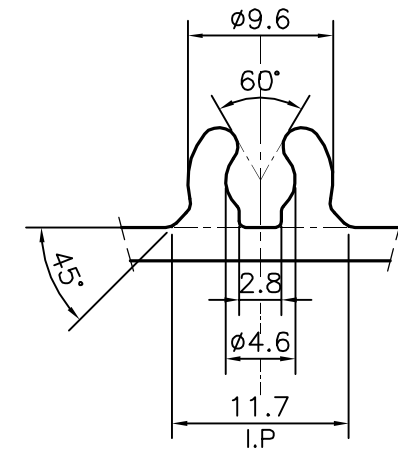
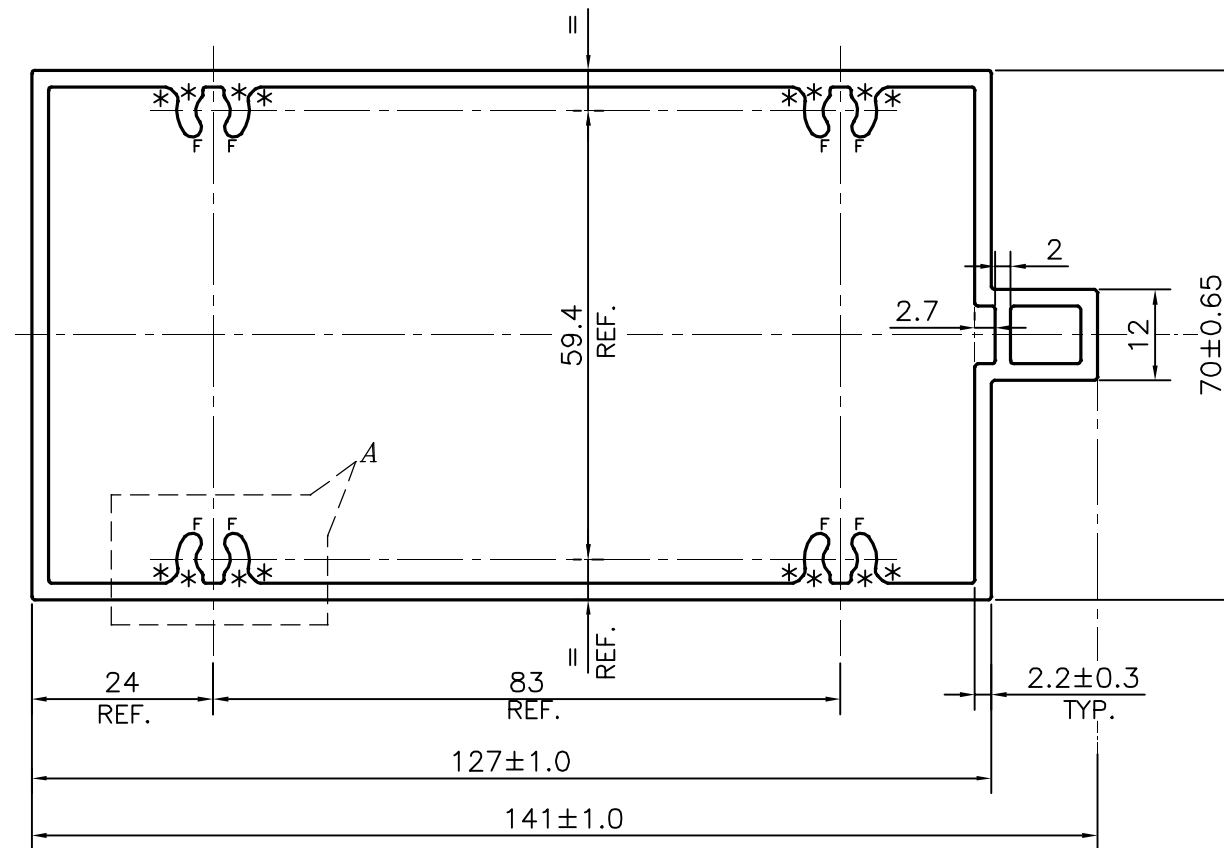


P-22719-2

E1633



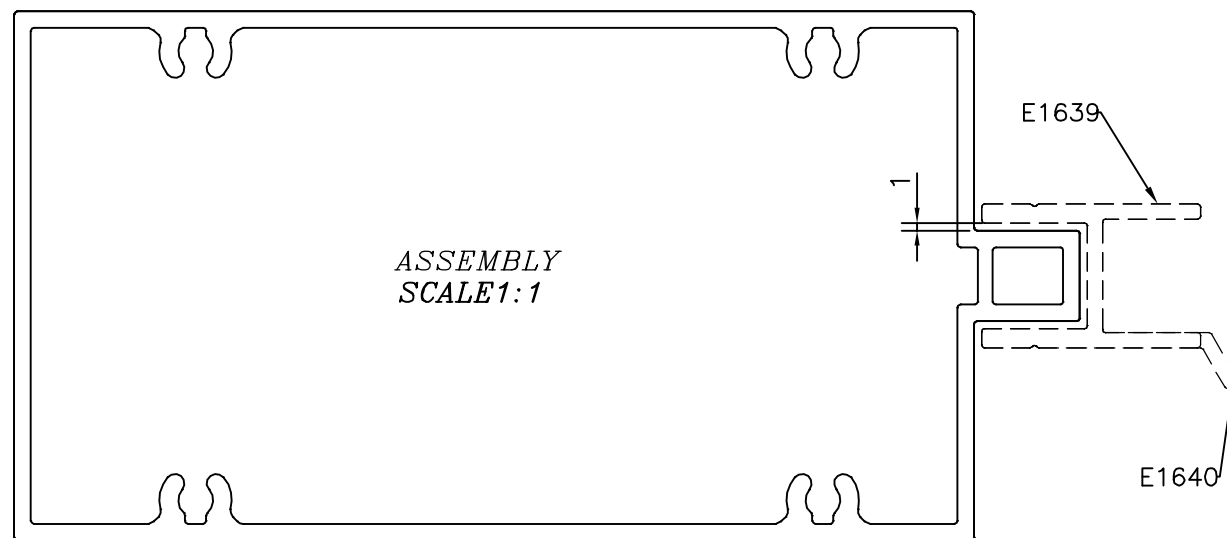
DETAIL OF "A"
SCALE 2:1

SCALE:-1:1

APPROXIMATE WEIGHT RANGE - 2.499 - 3.288 kg/m

FINISH:- POWDER COATING

* = 1 MM RADIUS (16 PLACES)
F = FULL RADIUS (8 PLACES)



TOLERANCES ON OVERALL DIMENSIONS OF HOLLOW SECTIONS

UPTO 20.0mm - ±0.30	UPTO 80.0mm - ±0.70	UPTO 180.0mm - ±1.27	1. STRAIGHTNESS=1.0mm/M 2. TWIST=1.0mm/M 3. ANGULARITY= ±1° 4. FLATNESS =0.007xWIDTH
UPTO 30.0mm - ±0.38	UPTO 100.0mm - ±0.80	UPTO 200.0mm - ±1.40	
UPTO 40.0mm - ±0.45	UPTO 120.0mm - ±0.90	UPTO 225.0mm - ±1.52	
UPTO 50.0mm - ±0.52	UPTO 140.0mm - ±1.00		
UPTO 60.0mm - ±0.60	UPTO 160.0mm - ±1.14		

 SYMBOL OF QUALITY AN ISO 9001 COMPANY	JINDAL ALUMINIUM LTD. BANGALORE-560073 (INDIA)	NAME	DATE
		DRAWN SONU	21-09-2021
1. ALL DIMENSIONS ARE IN mm. 2. ROUND OFF ALL SHARP CORNERS WITH 0.40 mm. 3. TOLERANCES WILL BE AS PER IS:6477-1983 , UNLESS OTHERWISE SPECIFIED		CHECKED	
		APPROVED B.NATARAJA	01-10-2021
PARTY'S NAME ALUFIT (INDIA) PVT. LTD., BANGALORE		SCALE	1:1
		AREA mm ²	1071.374
PARTY'S DRAWING No. HP-DIE-05 & REQUIREMENT		PERIMETER mm.	420.627
		WEIGHT kg/m	2.893
ALLOY & TEMPER 6063 T6		DRAWING No.	SECTION No.
		P-22719-2	-
DESCRIPTION CURTAIN WALL SECTION-TRANSOM		E1633	E1633