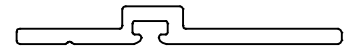
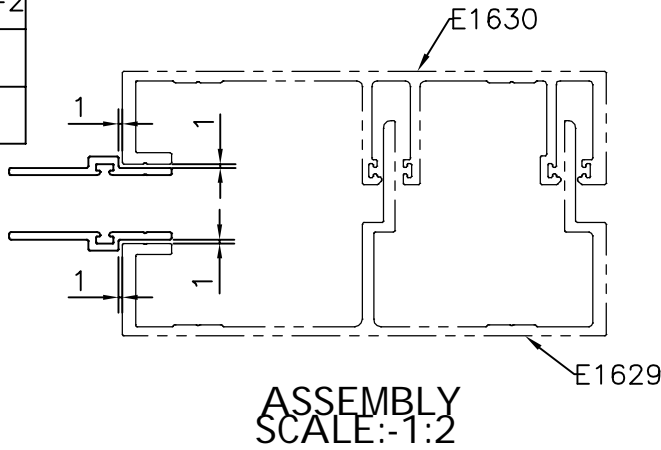
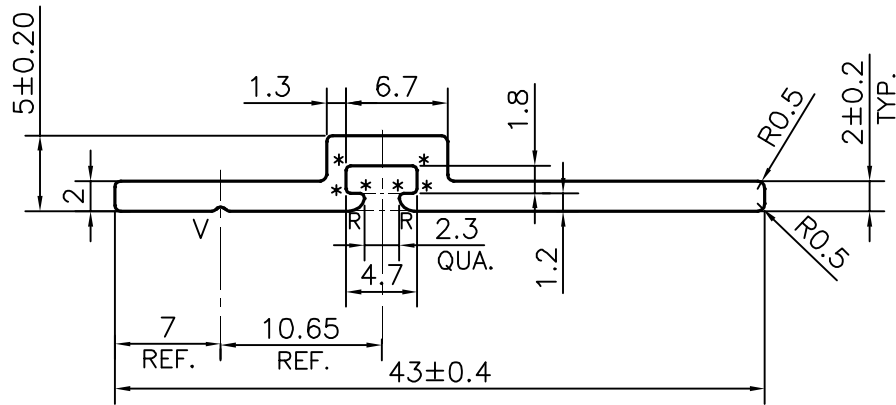


P-22720-2

E1634



SCALE:-1:1



SCALE:-2:1

APPROXIMATE WEIGHT RANGE - 0.239 - 0.292 kg/m

**FINISH:- POWDER COATING**

V = V GROOVE 0.3x90° (1 PLACE)

R = 1 MM RADIUS (2 PLACES)

\* = 0.3 mm RADIUS(6 PLACES)

TOLERANCES ON OVERALL WIDTHS & WIDTHS ACROSS FLATS OF BARS, & REGULAR SECTIONS

UPTO 6.40mm - ±0.20	UPTO 32.0mm - ±0.38	UPTO 120.0mm - ±0.85	1. STRAIGHTNESS=1.0mm/M 2. TWIST=1.0mm/M 3. ANGULARITY= ±1° 4. FLATNESS =0.007xWIDTH
UPTO 10.0mm - ±0.23	UPTO 50.0mm - ±0.46	UPTO 160.0mm - ±1.02	
UPTO 12.0mm - ±0.25	UPTO 60.0mm - ±0.53	UPTO 200.0mm - ±1.14	
UPTO 16.0mm - ±0.28	UPTO 80.0mm - ±0.69	UPTO 250.0mm - ±1.40	
UPTO 25.0mm - ±0.30	UPTO 100.0mm - ±0.75	UPTO 300.0mm - ±1.65	



SYMBOL OF QUALITY  
AN ISO 9001 COMPANY

**JINDAL ALUMINIUM LTD.**  
BANGALORE-560073 (INDIA)

	NAME	DATE
DRAWN	PUNITH	21-09-2021
CHECKED		
APPROVED	B.NATARAJA	01-10-2021

- ALL DIMENSIONS ARE IN mm.
- ROUND OFF ALL SHARP CORNERS WITH 0.40 mm.
- TOLERANCES WILL BE AS PER IS:3965-1981, UNLESS OTHERWISE SPECIFIED

SCALE	2:1
AREA mm <sup>2</sup>	98.059
PERIMETER mm.	103.912
WEIGHT kg/m	0.265
DRAWING No.	SECTION No.
P-22720-2	-
E1634	E1634

PARTY'S NAME ALUFIT (INDIA) PVT. LTD., BANGALORE

PARTY'S DRAWING No. HP-DIE-06 AND REQUIREMENT

ALLOY & TEMPER 6063 T6

DESCRIPTION CURTAIN WALL SECTION-EDGE GUARD