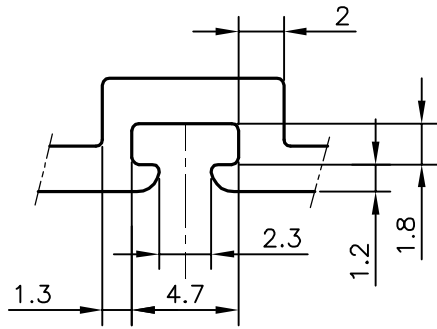
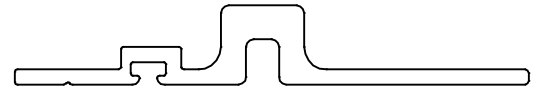


P-22727-2

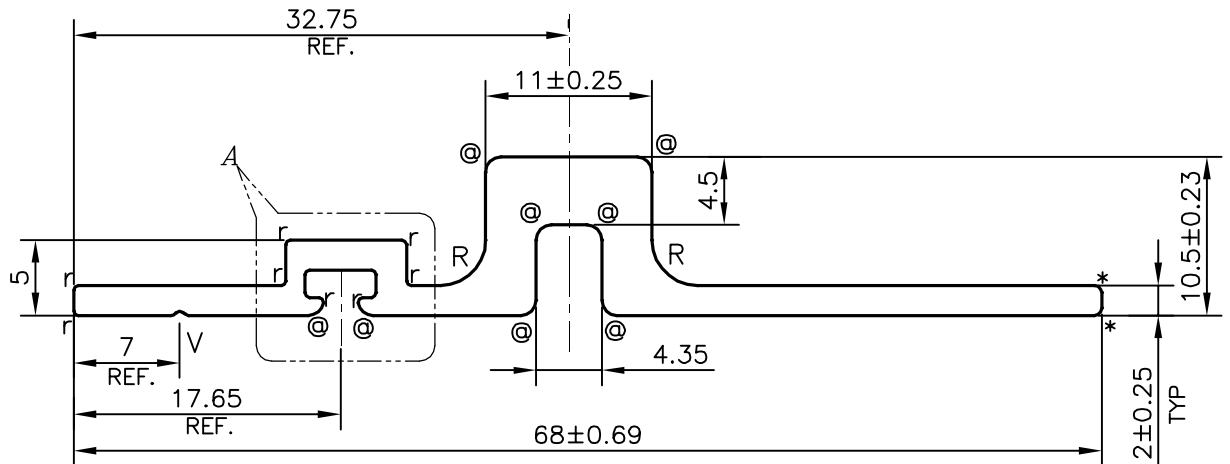
E1641



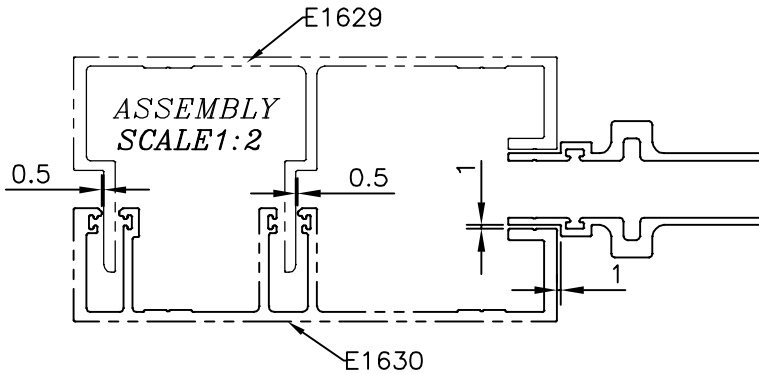
DETAIL OF "A"  
SCALE 3:1



SCALE 1:1



SCALE:- 2:1



**FINISH:- POWDER COATING**

- \* = 0.50 RADIUS (2 PLACES)
- r = 0.30 RADIUS (8 PLACES)
- R = 3.0 RADIUS (2 PLACES)
- @ = 1.0 RADIUS (8 PLACES)
- V = V GROOVE 0.3x90° (1 PLACE)

**APPROXIMATE WEIGHT RANGE - 0.517 - 0.665 kg/m**

TOLERANCES ON OVERALL WIDTHS & WIDTHS ACROSS FLATS OF BARS, & REGULAR SECTIONS

UPTO 6.40mm - ±0.20	UPTO 32.0mm - ±0.38	UPTO 120.0mm - ±0.85
UPTO 10.0mm - ±0.23	UPTO 50.0mm - ±0.46	UPTO 160.0mm - ±1.02
UPTO 12.0mm - ±0.25	UPTO 60.0mm - ±0.53	UPTO 200.0mm - ±1.14
UPTO 16.0mm - ±0.28	UPTO 80.0mm - ±0.69	UPTO 250.0mm - ±1.40
UPTO 25.0mm - ±0.30	UPTO 100.0mm - ±0.75	UPTO 300.0mm - ±1.65

1. STRAIGHTNESS= 1.0mm/M
2. TWIST= 1.0mm/M
3. ANGULARITY= ±1°
4. FLATNESS =0.007xWIDTH



SYMBOL OF QUALITY  
AN ISO 9001 COMPANY

**JINDAL ALUMINIUM LTD.**  
BANGALORE-560073 (INDIA)

	NAME	DATE
DRAWN	SONU	21-09-2021
CHECKED		
APPROVED	B.NATARAJA	01-10-2021
SCALE		2:1
AREA mm <sup>2</sup>		218.925
PERIMETER mm.		178.024
WEIGHT kg/m		0.591
DRAWING No.	SECTION No.	
P-22727-2	-	
E1641	E1641	

1. ALL DIMENSIONS ARE IN mm.
2. ROUND OFF ALL SHARP CORNERS WITH 0.40 mm.
3. TOLERANCES WILL BE AS PER IS:3965-1981, UNLESS OTHERWISE SPECIFIED

PARTY'S NAME	ALUFIT (INDIA) PVT. LTD., BANGALORE
PARTY'S DRAWING No.	HP-DIE-13 & REQUIREMENT
ALLOY & TEMPER	6063 T6
DESCRIPTION	CURATIN WALL - EDGE GUARD SECTION