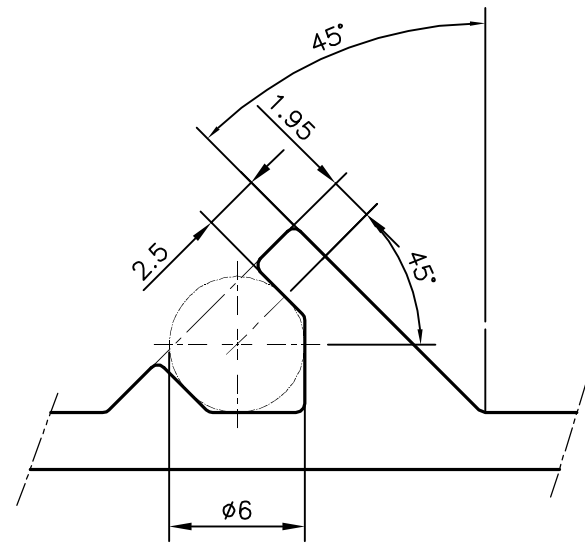
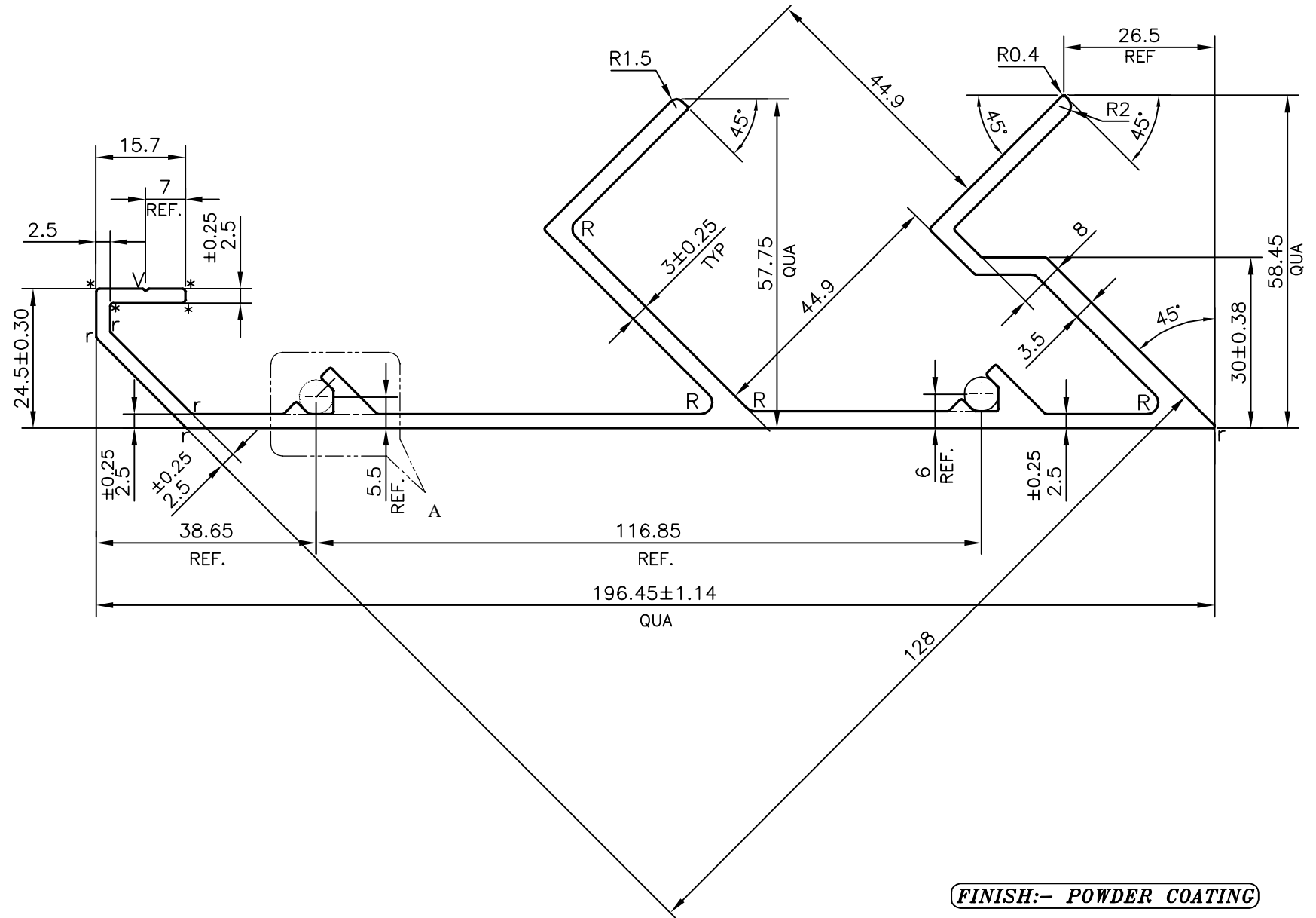


P-22731-3

E1645



DETAIL OF "A"  
SCALE 3:1



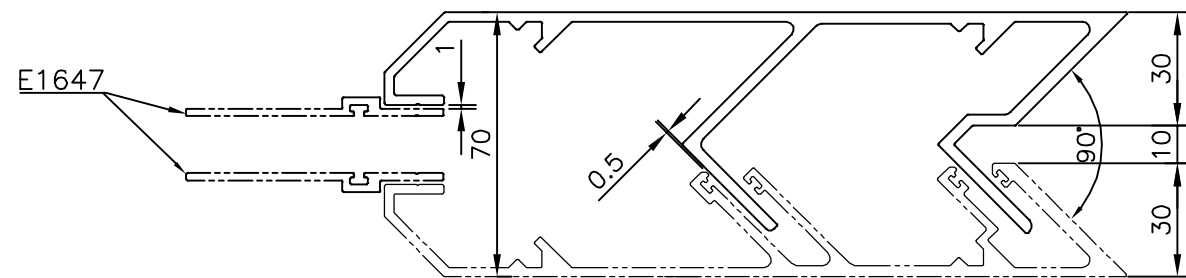
**FINISH:- POWDER COATING**

- r = 0.30 RADIUS (5 PLACES)
- \* = 0.50 RADIUS (4 PLACES)
- R = 2.0 RADIUS (4 PLACES)
- V = V GROOVE 0.3x90° (1 PLACE)


**APPROXIMATE WEIGHT RANGE - 2.888 - 3.530 kg/m**

TOLERANCES ON OVERALL WIDTHS & WIDTHS ACROSS FLATS OF BARS, & REGULAR SECTIONS

UPTO 6.40mm - ±0.20	UPTO 32.0mm - ±0.38	UPTO 120.0mm - ±0.85	1. STRAIGHTNESS=0.75mm/M 2. TWIST=0.75mm/M 3. ANGULARITY= ±0.8° 4. FLATNESS =0.006xWIDTH
UPTO 10.0mm - ±0.23	UPTO 50.0mm - ±0.46	UPTO 160.0mm - ±1.02	
UPTO 12.0mm - ±0.25	UPTO 60.0mm - ±0.53	UPTO 200.0mm - ±1.14	
UPTO 16.0mm - ±0.28	UPTO 80.0mm - ±0.69	UPTO 250.0mm - ±1.40	
UPTO 25.0mm - ±0.30	UPTO 100.0mm - ±0.75	UPTO 300.0mm - ±1.65	



ASSEMBLY  
SCALE: -1:2

 SYMBOL OF QUALITY AN ISO 9001 COMPANY	<b>JINDAL ALUMINIUM LTD.</b> BANGALORE-560073 (INDIA)		NAME	DATE
			DRAWN	SONU
1. ALL DIMENSIONS ARE IN mm. 2. ROUND OFF ALL SHARP CORNERS WITH 0.40 mm. 3. TOLERANCES WILL BE AS PER IS:3965-1981 UNLESS OTHERWISE SPECIFIED			CHECKED	
			APPROVED	B.NATARAJA
PARTY'S NAME ALUFIT (INDIA) PVT. LTD., BANGALORE			SCALE	1:1
			AREA mm <sup>2</sup>	1187.411
PARTY'S DRAWING No. HP-DIE-17 & REQUIREMENT			PERIMETER mm.	794.567
			WEIGHT kg/m	3.206
ALLOY & TEMPER 6063 T6			DRAWING No.	SECTION No.
			P-22731-3	-
DESCRIPTION CURTAIN WALL - MALE MULAN SECTION			E1645	E1645