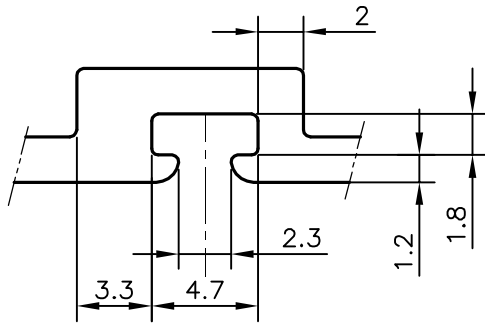
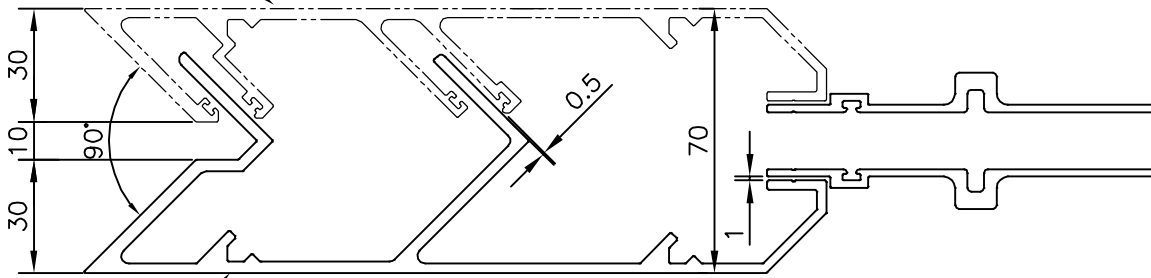
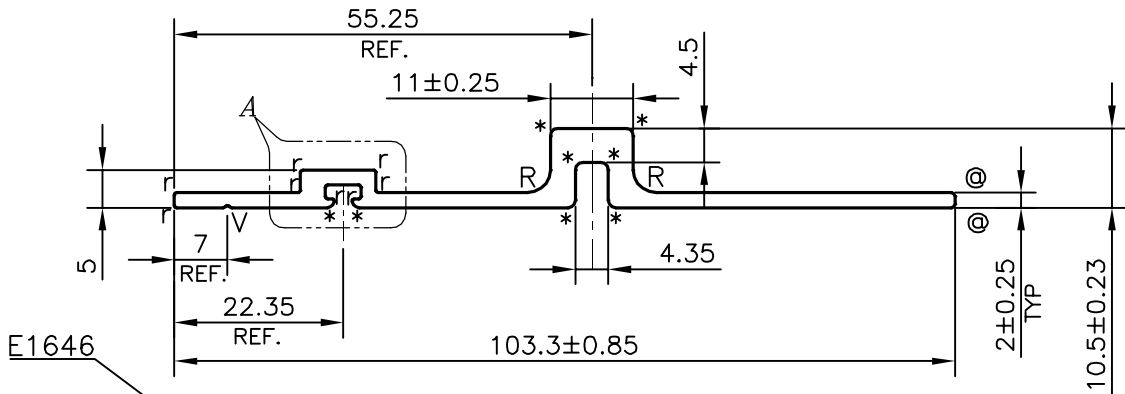


P-22749-1

E1649



DETAIL OF "A"
SCALE 3:1



ASSEMBLY
SCALE 1:2

FINISH:- POWDER COATING

- * = 1.00 RADIUS (8 PLACES)
- r = 0.30 RADIUS (8 PLACES)
- R = 3.00 RADIUS (2 PLACES)
- @ = 0.50 RADIUS (2 PLACES)
- V = V GROOVE 0.3x90° (1 PLACE)

APPROXIMATE WEIGHT RANGE - 0.698 - 0.898 kg/m

TOLERANCES ON OVERALL WIDTHS & WIDTHS ACROSS FLATS OF BARS, & REGULAR SECTIONS

UPTO 6.40mm - ±0.20	UPTO 32.0mm - ±0.38	UPTO 120.0mm - ±0.85	1. STRAIGHTNESS= 1.0mm/M 2. TWIST= 1.0mm/M 3. ANGULARITY= ±1° 4. FLATNESS =0.007xWIDTH
UPTO 10.0mm - ±0.23	UPTO 50.0mm - ±0.46	UPTO 160.0mm - ±1.02	
UPTO 12.0mm - ±0.25	UPTO 60.0mm - ±0.53	UPTO 200.0mm - ±1.14	
UPTO 16.0mm - ±0.28	UPTO 80.0mm - ±0.69	UPTO 250.0mm - ±1.40	
UPTO 25.0mm - ±0.30	UPTO 100.0mm - ±0.75	UPTO 300.0mm - ±1.65	



SYMBOL OF QUALITY
AN ISO 9001 COMPANY

JINDAL ALUMINIUM LTD.
BANGALORE-560073 (INDIA)

	NAME	DATE
DRAWN	SONU	21-09-2021
CHECKED		
APPROVED	B.NATARAJA	01-10-2021
SCALE		1:1
AREA mm ²		295.525
PERIMETER mm.		248.624
WEIGHT kg/m		0.798
DRAWING No.		SECTION No.
P-22749-1		-
E1649		E1649

1. ALL DIMENSIONS ARE IN mm.
2. ROUND OFF ALL SHARP CORNERS WITH 0.40 mm.
3. TOLERANCES WILL BE AS PER IS:3965-1981, UNLESS OTHERWISE SPECIFIED

PARTY'S NAME	ALUFIT (INDIA) PVT. LTD., BANGALORE
PARTY'S DRAWING No.	HP-DIE-24 & REQUIREMENT
ALLOY & TEMPER	6063 T6
DESCRIPTION	CURATIN WALL - EDGE GUARD SECTION