

P-22632-1

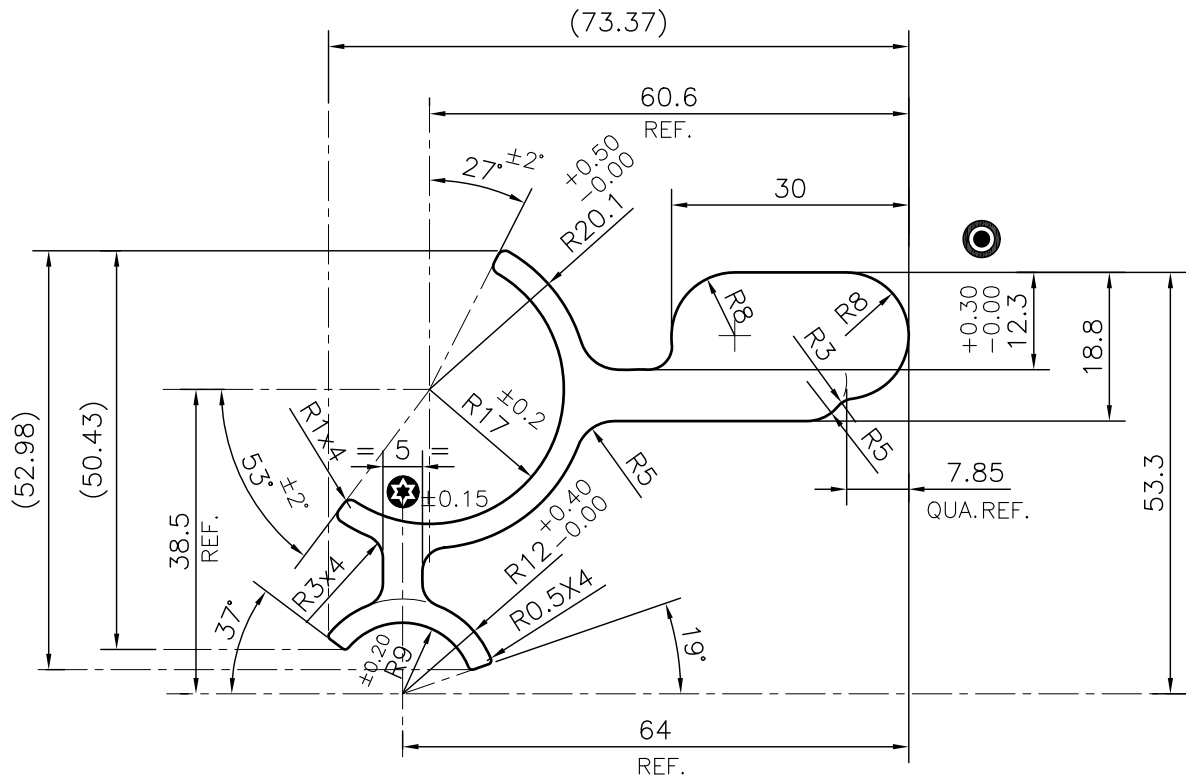
G043545

ISSUE-2:- 1.RADIUS CHANGED FROM 11.5 MM TO 12 MM
 2.ANGLE CHANGED FROM 34° TO 19°
 3.WEIGHT CHANGED FROM 2.202 Kg/m TO 2.249 Kg/m

ISSUE-3:- 1.DIMENSION CHANGED FROM 14.8mm TO 12.8mm
 2.WEIGHT CHANGED FROM 2.249 Kg/m TO 2.311 Kg/m

ISSUE-4:- 1.DIMENSION CHANGED FROM 12.8mm TO 12.3mm 
 2.WEIGHT CHANGED FROM 2.311 Kg/m TO 2.326 Kg/m

ISSUE-5:- 1.DIMENSION CHANGED FROM 4mm TO 5mm 
 2.WEIGHT CHANGED FROM 2.326 Kg/m TO 2.344 Kg/m



SCALE:- 1:1

TOLERANCES ON OVERALL WIDTHS & WIDTHS ACROSS FLATS OF BARS, & REGULAR SECTIONS

UPTO 6.40mm - ±0.20	UPTO 32.0mm - ±0.38	UPTO 120.0mm - ±0.85	1. STRAIGHTNESS=1.7mm/M 2. TWIST=1.7mm/M 3. ANGULARITY= ±2° 4. FLATNESS =0.007xWIDTH
UPTO 10.0mm - ±0.23	UPTO 50.0mm - ±0.46	UPTO 160.0mm - ±1.02	
UPTO 12.0mm - ±0.25	UPTO 60.0mm - ±0.53	UPTO 200.0mm - ±1.14	
UPTO 16.0mm - ±0.28	UPTO 80.0mm - ±0.69	UPTO 250.0mm - ±1.40	
UPTO 25.0mm - ±0.30	UPTO 100.0mm - ±0.75	UPTO 300.0mm - ±1.65	



SYMBOL OF QUALITY
AN ISO 9001 COMPANY

JINDAL ALUMINIUM LTD.
BANGALORE-560073 (INDIA)

	NAME	DATE
DRAWN	PUNITH	24-06-2022
CHECKED		
APPROVED	B.NATARAJA	06-07-2022

- ALL DIMENSIONS ARE IN mm.
- ROUND OFF ALL SHARP CORNERS WITH 0.40 mm.
- TOLERANCES WILL BE AS PER IS:3965-1981, UNLESS OTHERWISE SPECIFIED

SCALE	1:1
AREA mm ²	868.093
PERIMETER mm.	269.506
WEIGHT kg/m	2.344

PARTY'S NAME	PYN PRECISION COMPONENTS, FARIDABAD	DRAWING No.	SECTION No.
PARTY'S DRAWING No.	MODIFIED SECTION OF 28586	P-22632-1	-
ALLOY & TEMPER	6005 T5	G043545	G043545(ISSUE-5)
DESCRIPTION	INLET FLANGE SECTION		