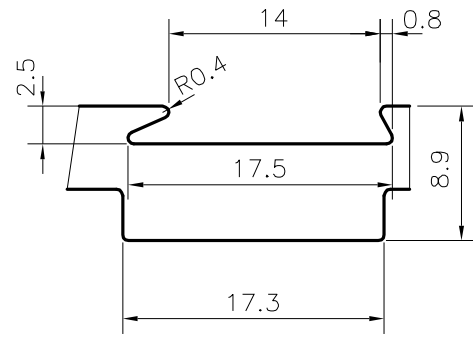
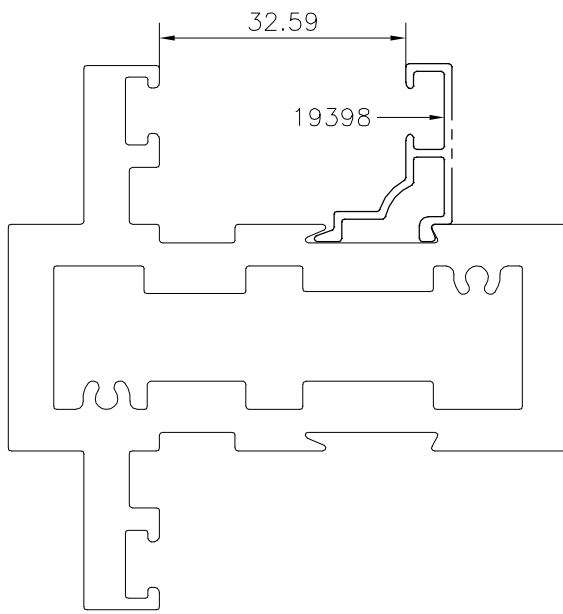
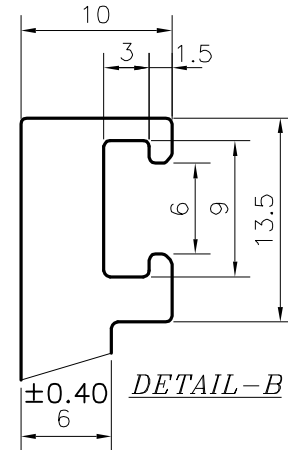
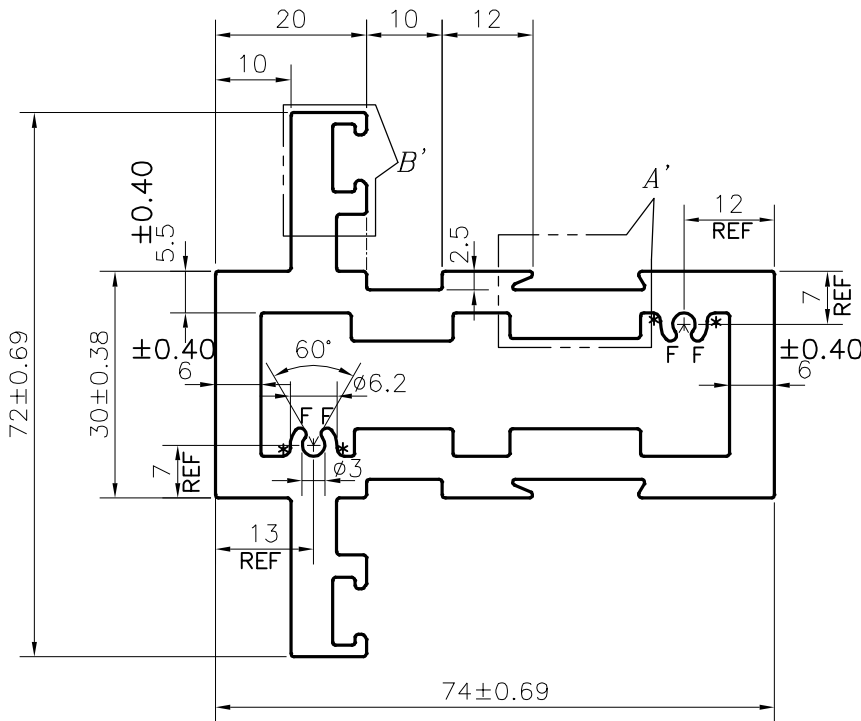


P-24251

G100316



DETAIL-A



DETAIL-B

- *= 1.0 RADIUS (4 PLACES)
- F= FULL RADIUS (4 PLACES)
- 1. STRAIGHTNESS=1.7mm/M
- 2. TWIST=1.7mm/M
- 3. ANGULARITY= ±2°
- 4. FLATNESS =0.007xWIDTH



SYMBOL OF QUALITY
AN ISO 9001 COMPANY

JINDAL ALUMINIUM LTD.
BANGALORE-560073 (INDIA)

	NAME	DATE
DRAWN	J.P.KAUSHIK	14-07-2022
CHECKED		
APPROVED	B.NATARAJA	30-08-2022
SCALE		1:1
AREA mm ²		1448.374
PERIMETER mm.		359.818
WEIGHT kg/m		3.911
DRAWING No.	SECTION No.	
P-24251	7000000420	
G100316	G100316	

- 1. ALL DIMENSIONS ARE IN mm.
- 2. ROUND OFF ALL SHARP CORNERS WITH 0.40 mm.
- 3. TOLERANCES WILL BE AS PER IS:6477-1983, UNLESS OTHERWISE SPECIFIED

PARTY'S NAME	NKG INFRASTRUCTURE LTD., NEW DELHI	
PARTY'S DRAWING No.	NKG-FW-02	
ALLOY & TEMPER	6063 T6	PRODUCT CODE:-048
		HSN CODE:-76042100
DESCRIPTION	WINDOW SECTION(FIXEDMID MULLION)	