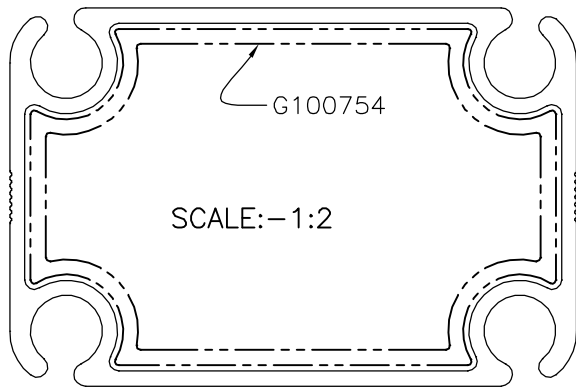
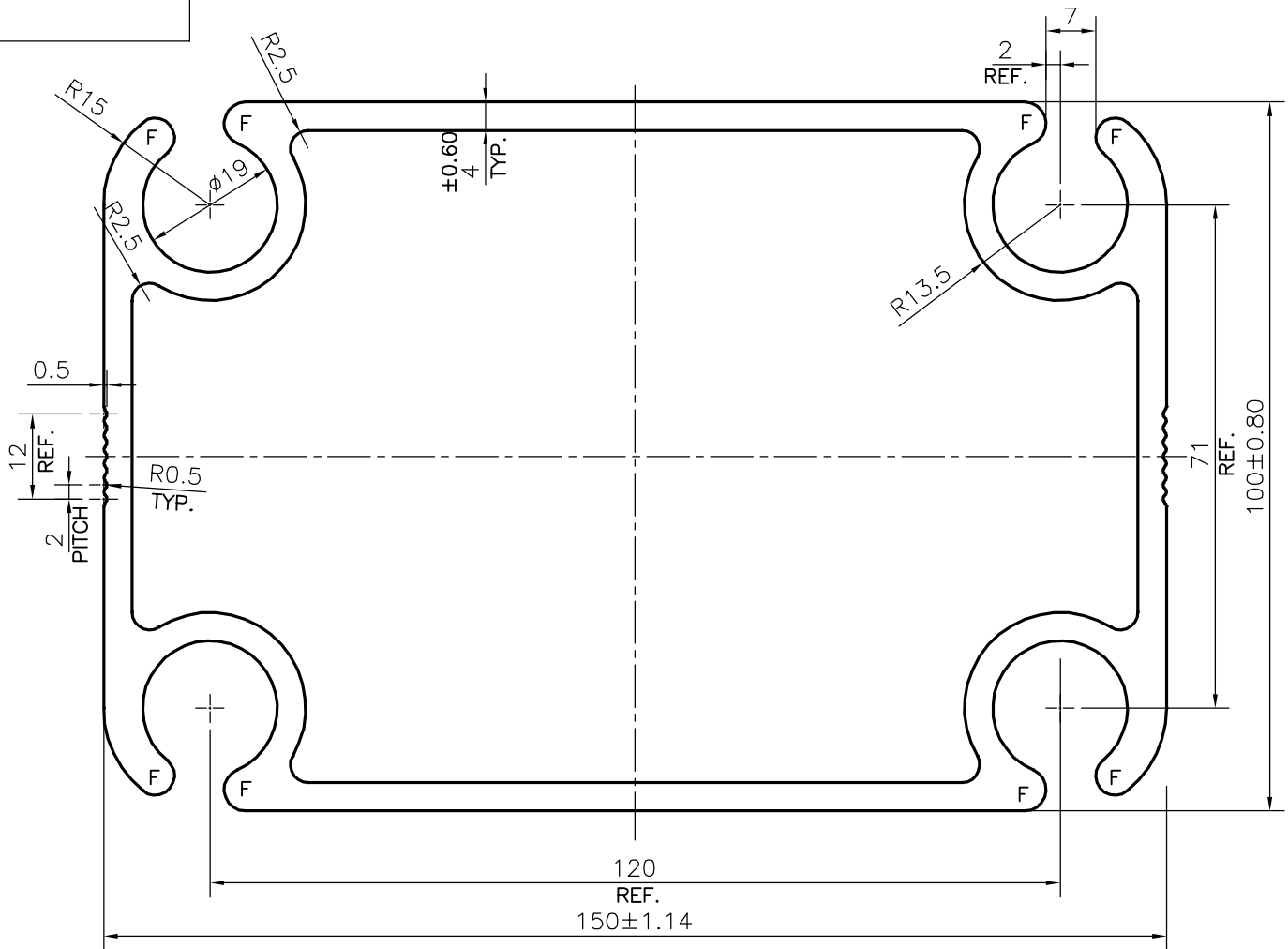



P-25023

G100753



CONTROLLED COPY

- F = FULL RADIUS (8 PLACES)
1. STRAIGHTNESS=1.7mm/M
 2. TWIST=1.7mm/M
 3. ANGULARITY= ±2°
 4. FLATNESS =0.007xWIDTH

 SYMBOL OF QUALITY AN ISO 9001 COMPANY	JINDAL ALUMINIUM LTD. BANGALORE-560073 (INDIA)		NAME	DATE
			DRAWN	J.P.KAUSHIK
			CHECKED	
			APPROVED	B.NATARAJA
				09-03-2023
1. ALL DIMENSIONS ARE IN mm. 2. ROUND OFF ALL SHARP CORNERS WITH 0.50 mm. 3. TOLERANCES WILL BE AS PER IS:6477-1983 , UNLESS OTHERWISE SPECIFIED			SCALE	1:1
			AREA mm ²	2545.985
			PERIMETER mm.	683.693
			WEIGHT kg/m	6.874
PARTY'S NAME	ATCO ALUMINIUM SYSTEMS, NEW DELHI		DRAWING No.	SECTION No.
PARTY'S DRAWING No.	AS PER DRAWING		P-25023	-
ALLOY & TEMPER	6005 T6	PRODUCT CODE:-047	G100753	G100753
		HSN CODE:-76042100		
DESCRIPTION	DISPLAY SECTION			