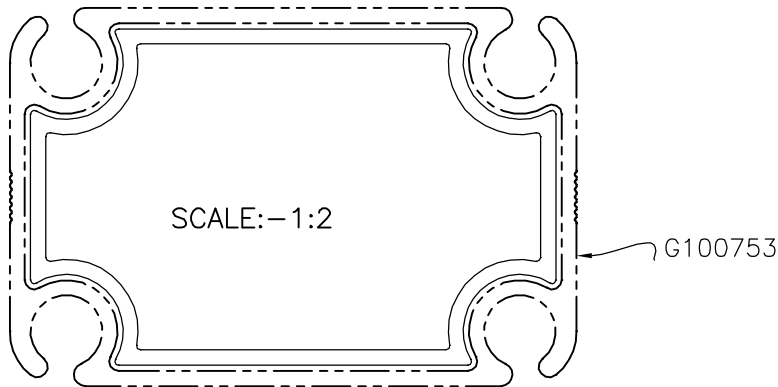
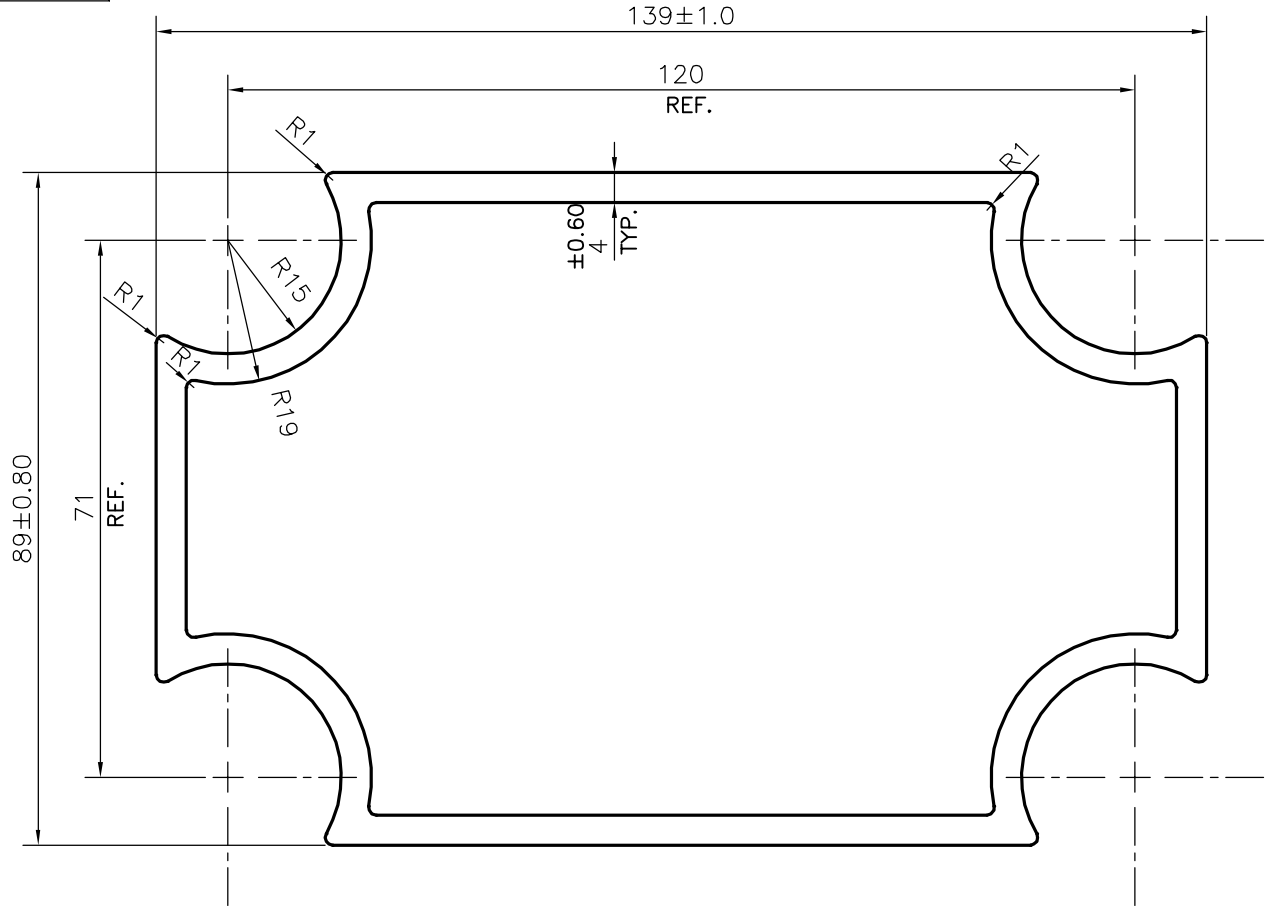


P-25024

G100754



CONTROLLED COPY

1. STRAIGHTNESS=1.7mm/M
2. TWIST=1.7mm/M
3. ANGULARITY= ±2°
4. FLATNESS =0.007xWIDTH



SYMBOL OF QUALITY
AN ISO 9001 COMPANY

JINDAL ALUMINIUM LTD.
BANGALORE-560073 (INDIA)

	NAME	DATE
DRAWN	J.P.KAUSHIK	28-02-2023
CHECKED		
APPROVED	B.NATARAJA	09-03-2023
SCALE		1:1
AREA mm ²		1704.839
PERIMETER mm.		448.522
WEIGHT kg/m		4.603
DRAWING No.	SECTION No.	
P-25024	-	
G100754	G100754	

1. ALL DIMENSIONS ARE IN mm.
2. ROUND OFF ALL SHARP CORNERS WITH 0.50 mm.
3. TOLERANCES WILL BE AS PER IS:6477-1983, UNLESS OTHERWISE SPECIFIED

PARTY'S NAME	ATCO ALUMINIUM SYSTEMS, NEW DELHI	
PARTY'S DRAWING No.	AS PER DRAWING	
ALLOY & TEMPER	6005 T6	PRODUCT CODE:-047
		HSN CODE:-76042100
DESCRIPTION	DISPLAY SECTION	