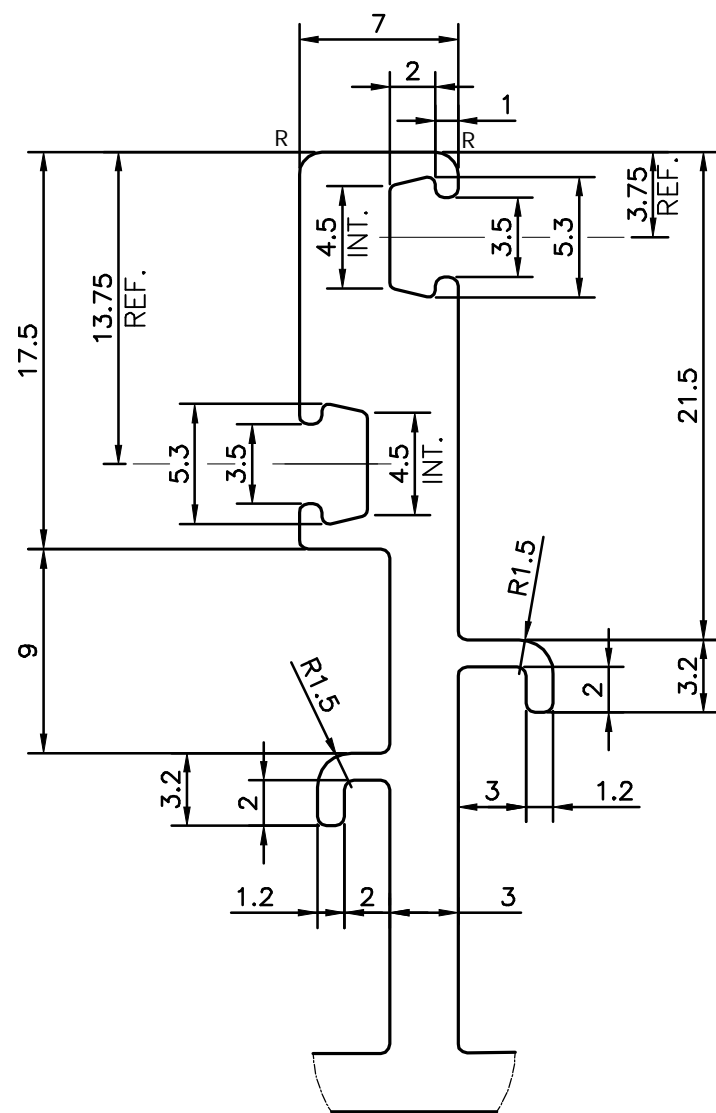
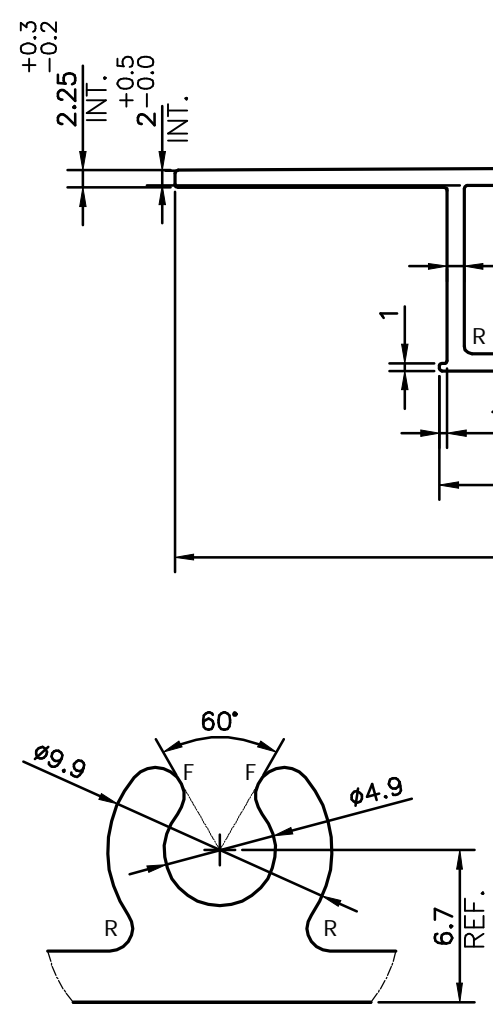


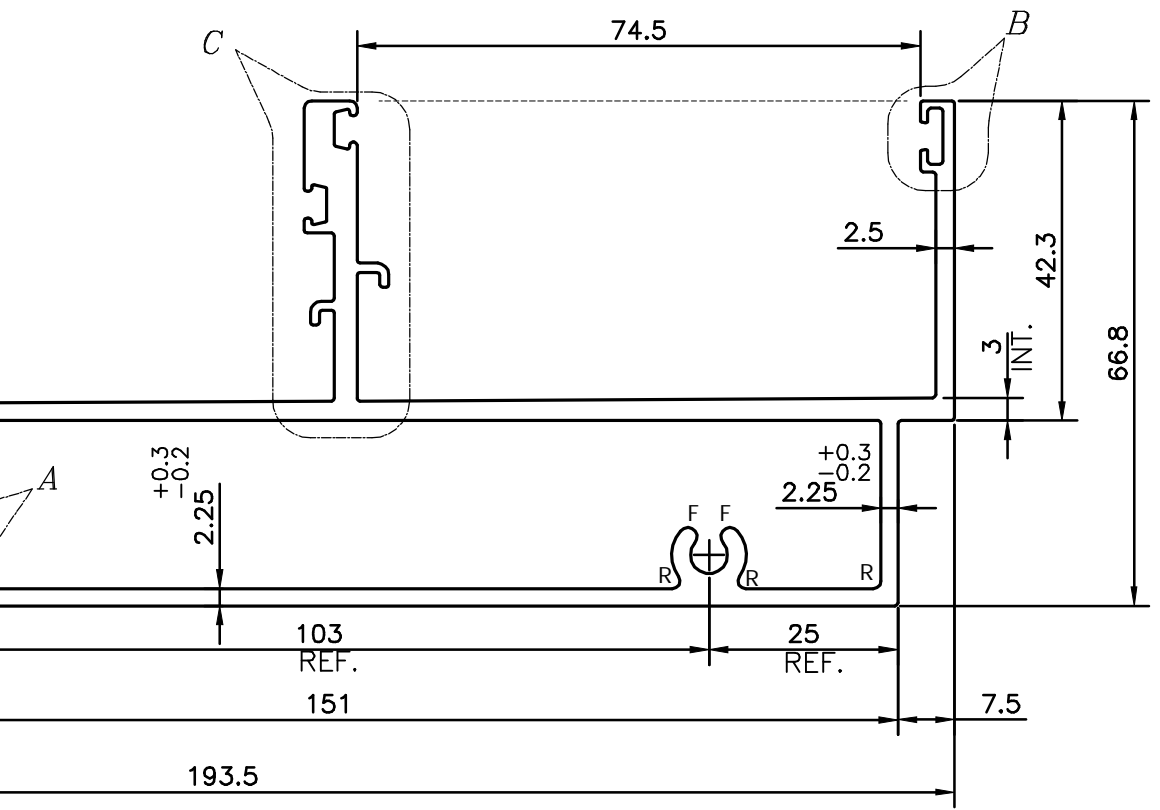
P-25857
G101216



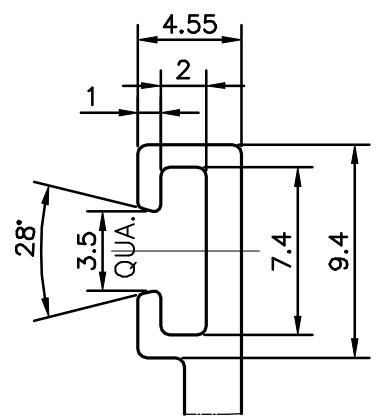
DETAIL "C"
SCALE 3:1



DETAIL "A"
SCALE 3:1



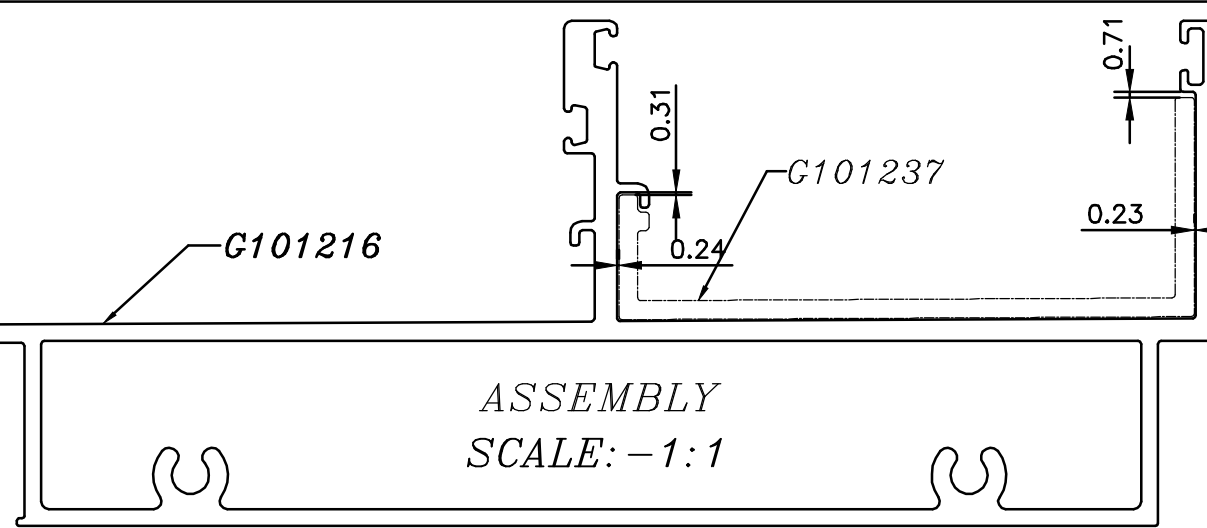
SCALE: -1:1



DETAIL "B"
SCALE 3:1

CONTROLLED COPY

- R= 1.0 RADIUS (6 PLACES)
- F= FULL RADIUS (4 PLACES)
- 1. STRAIGHTNESS= 1.7mm/M
- 2. TWIST= 1.7mm/M
- 3. ANGULARITY= ±2°
- 4. FLATNESS= 0.007xWIDTH



ASSEMBLY
SCALE: -1:1

<p>SYMBOL OF QUALITY AN ISO 9001 COMPANY</p>	<p>JINDAL ALUMINIUM LTD. BANGALORE-560073 (INDIA)</p>		NAME	DATE
	<p>1. ALL DIMENSIONS ARE IN mm. 2. ROUND OFF ALL SHARP CORNERS WITH 0.40 mm. 3. TOLERANCES WILL BE AS PER BS:EN-755-9 , UNLESS OTHERWISE SPECIFIED</p>		DRAWN	ADITYA N 03-08-2023
PARTY'S NAME	K.S.V INFRABUILD, GREATER NOIDA.		CHECKED	
PARTY'S DRAWING No.	HEAD TRANSOM (POPULUS TOWER)		APPROVED	B.NATARAJA 10-08-2023
ALLOY & TEMPER	6063 T6	PRODUCT CODE:-055 HSN CODE:-76042100	SCALE	1:1
DESCRIPTION	CURTAIN WALL SECTION		AREA mm ²	1301.231
			PERIMETER mm.	657.161
			WEIGHT kg/m	3.513
			DRAWING No.	SECTION No.
			P-25857	7000001352
			G101216	G101216