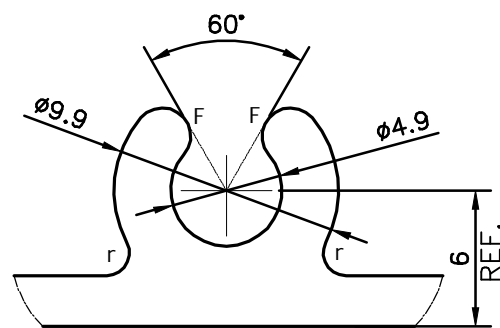
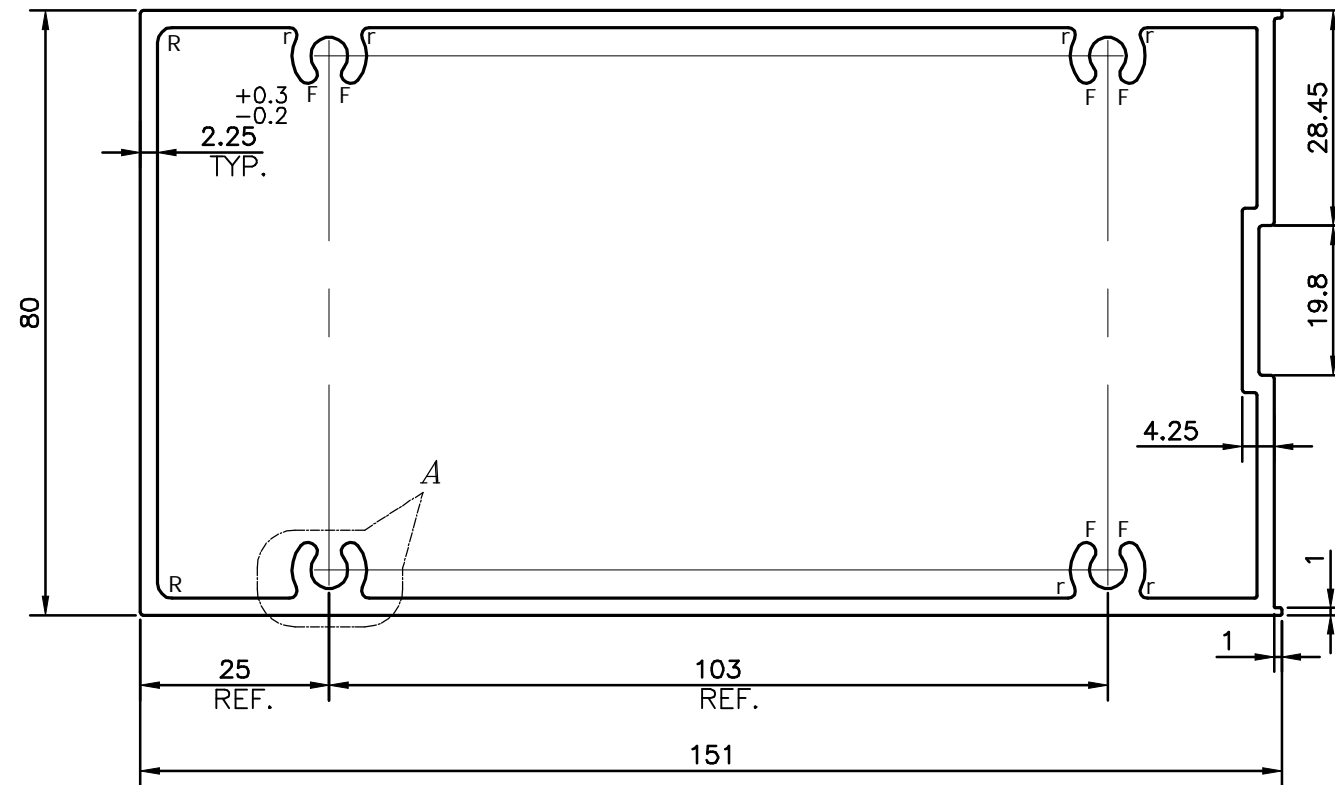


P-25858

G101217



DETAIL "A"  
SCALE 3:1

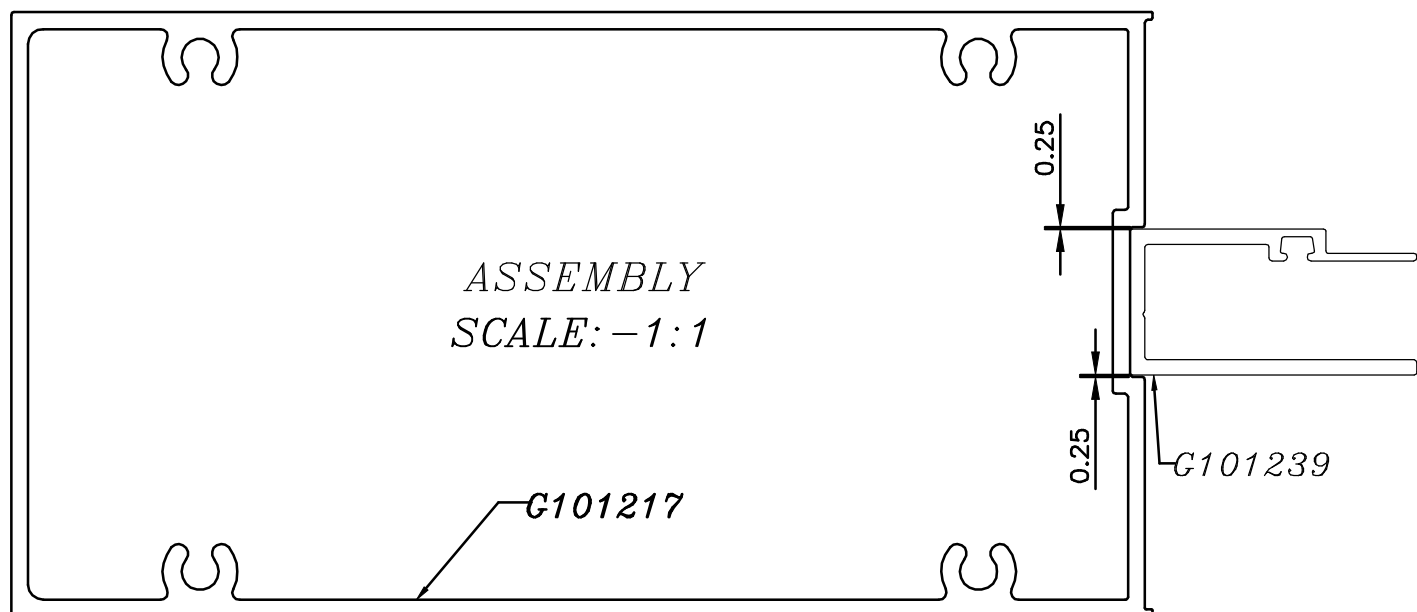


SCALE 1:1

**CONTROLLED COPY**

- r= RADIUS 1mm (8 PLACES)
- R= RADIUS 2mm (2 PLACES)
- F= FULL RADIUS (8 PLACES)

1. STRAIGHTNESS= 1.7mm/M
2. TWIST= 1.7mm/M
3. ANGULARITY= ±2°
4. FLATNESS= 0.007xWIDTH



ASSEMBLY  
SCALE: -1:1

<p>SYMBOL OF QUALITY AN ISO 9001 COMPANY</p>	<p><b>JINDAL ALUMINIUM LTD.</b> BANGALORE-560073 (INDIA)</p>		NAME	DATE
			DRAWN	ADITYA N
<p>1. ALL DIMENSIONS ARE IN mm. 2. ROUND OFF ALL SHARP CORNERS WITH 0.40 mm. 3. TOLERANCES WILL BE AS PER BS:EN-755-9 , UNLESS OTHERWISE SPECIFIED</p>			CHECKED	
			APPROVED	B.NATARAJA
<p>PARTY'S NAME</p>			K.S.V INFRABUILD, GREATER NOIDA.	
			<p>PARTY'S DRAWING No.</p>	
<p>ALLOY &amp; TEMPER</p>			6063 T6	
			<p>DESCRIPTION</p>	
<p>PRODUCT CODE:-055 HSN CODE:-76042100</p>			SCALE	1:1
			AREA mm <sup>2</sup>	1200.521
<p>PERIMETER mm.</p>			466.368	
			WEIGHT kg/m	3.241
<p>DRAWING No.</p>			SECTION No.	
			P-25858	
<p>G101217</p>			G101217	