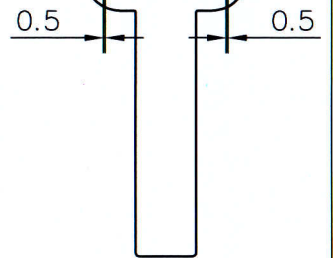


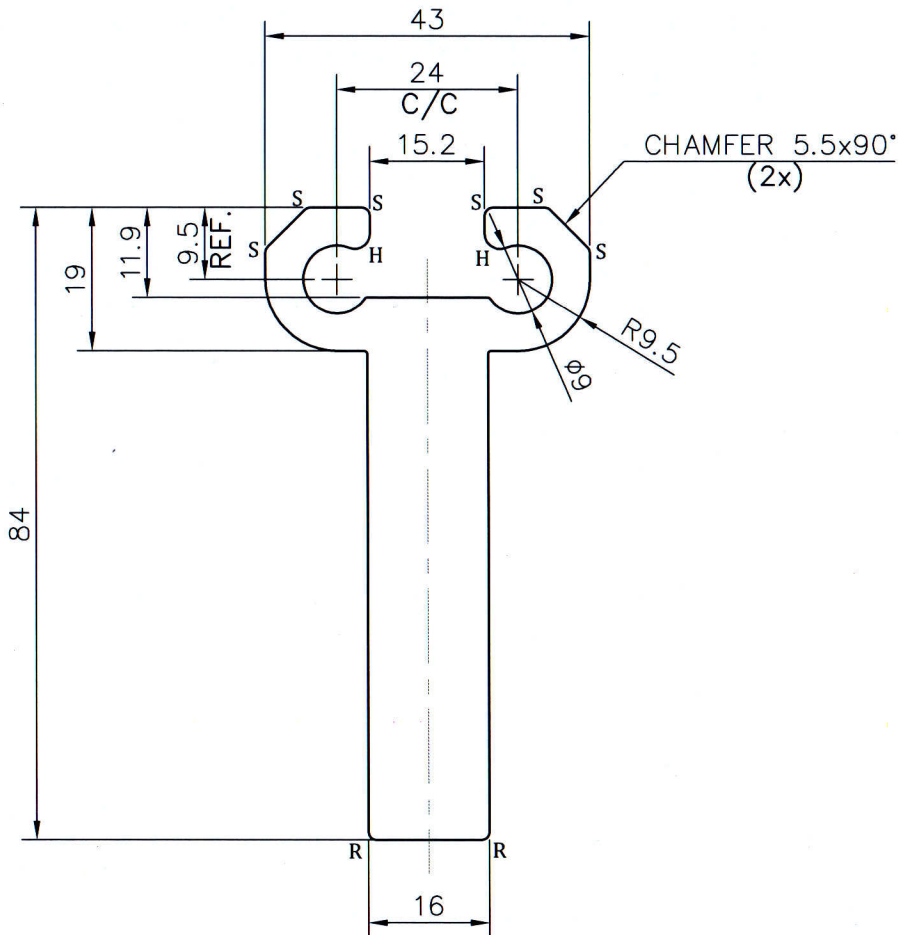
P-JAL-B-279

G101240

G101241



**MATCHING
SCALE 1:2**



NOTE:-

- R= 1.0 RADIUS (2 PLACES)**
- S= 1.1 RADIUS (6 PLACES)**
- H= 2.0 RADIUS (2 PLACES)**

1. STRAIGHTNESS= 1.7mm/M
2. TWIST= 1.7mm/M
3. ANGULARITY= ±2°
4. FLATNESS= 0.007xWIDTH

(Q00765)



SYMBOL OF QUALITY
AN ISO 9001 COMPANY

JINDAL ALUMINIUM LTD.

BHIWADI-301019 (INDIA)

1. ALL DIMENSIONS ARE IN mm.
2. ROUND OFF ALL SHARP CORNERS WITH 0.40 mm.
3. TOLERANCES WILL BE AS PER BS:EN-755-9 , UNLESS OTHERWISE SPECIFIED

PARTY'S NAME	K.S.V INFRABUILD, GREATER NOIDA	NAME	DATE
		DRAWN ASHUTOSH	25-07-2023
PARTY'S DRAWING No.	AS PER DRAWING-ALUM. HOOK BRACKET ELEMENT (POPULUS TOWER)	CHECKED <i>[Signature]</i>	16/8/2023
		APPROVED <i>[Signature]</i>	16/08/23
ALLOY & TEMPER	6005 T6	SCALE	1:1
		PRODUCT CODE: -055	AREA mm ²
DESCRIPTION	CURTAIN WALL SECTION	PERIMETER mm.	293.65
		HSN CODE: -76042990	WEIGHT kg/m
		DRAWING No.	SECTION No.
		P-JAL-B-279	7000001382
		G101240	G101240