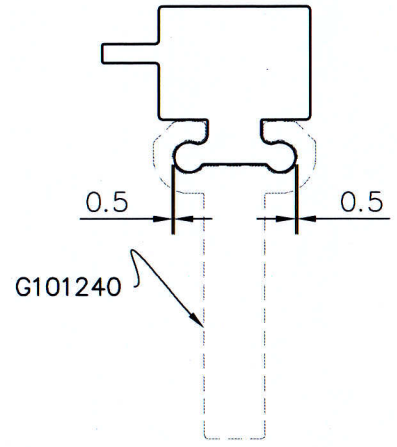
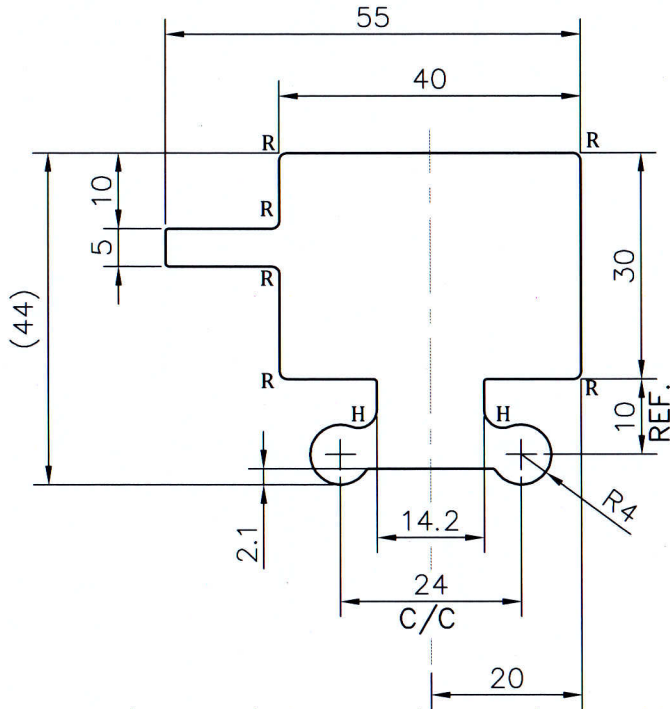


P-JAL-B-280

G101241



MATCHING
SCALE 1:2



NOTE:-

R= 1.0 RADIUS (6 PLACES)
H= 2.5 RADIUS (2 PLACES)

1. STRAIGHTNESS= 1.7mm/M
2. TWIST= 1.7mm/M
3. ANGULARITY= $\pm 2^\circ$
4. FLATNESS= 0.007xWIDTH

(Q00766)



SYMBOL OF QUALITY
AN ISO 9001 COMPANY

JINDAL ALUMINIUM LTD.
BHIWADI-301019 (INDIA)

1. ALL DIMENSIONS ARE IN mm.
2. ROUND OFF ALL SHARP CORNERS WITH 0.40 mm.
3. TOLERANCES WILL BE AS PER BS:EN-755-9 , UNLESS OTHERWISE SPECIFIED

	NAME	DATE
DRAWN	ASHUTOSH	25-07-2023
CHECKED	<i>[Signature]</i>	16/8/2023
APPROVED	<i>[Signature]</i>	16/08/23
SCALE		1:1
AREA mm ²		1561.55
PERIMETER mm.		223.84
WEIGHT kg/m		4.216
DRAWING No.	SECTION No.	
P-JAL-B-280	7000001383	
G101241	G101241	

PARTY'S NAME	K.S.V INFRABUILD, GREATER NOIDA	
PARTY'S DRAWING No.	AS PER DRAWING-ALUM. HOOK BRACKET ELEMENT-2 (POPULUS TOWER)	
ALLOY & TEMPER	6005 T6	PRODUCT CODE:-055
		HSN CODE:-76042990
DESCRIPTION	CURTAIN WALL SECTION	