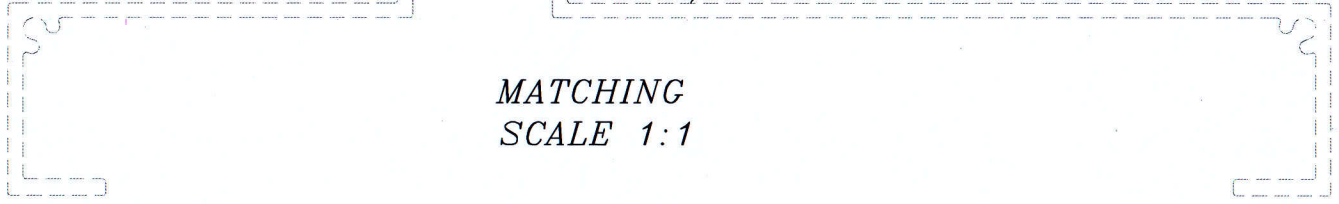
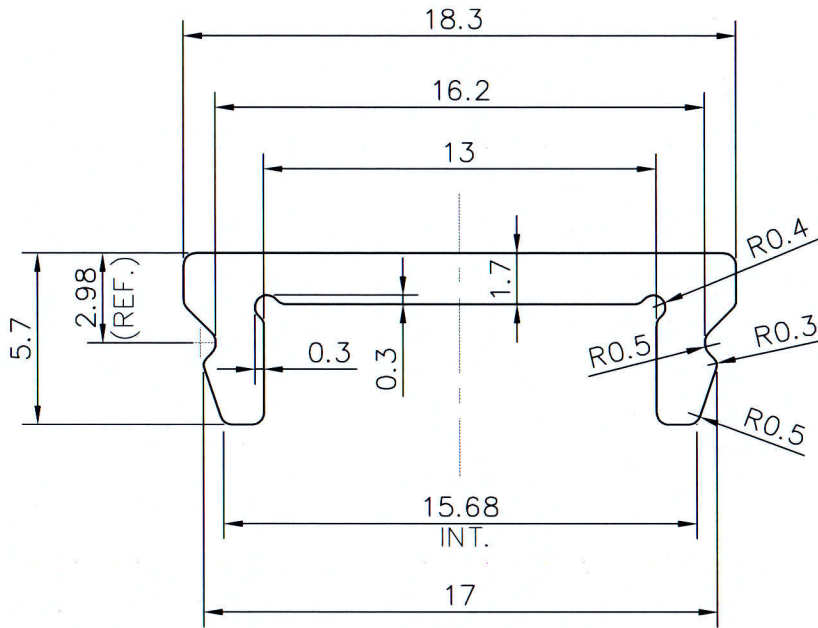


P-JAL-B-289

G101255



MATCHING
SCALE 1:1



1. STRAIGHTNESS= 1.7mm/M
2. TWIST= 1.7mm/M
3. ANGULARITY= ±2°
4. FLATNESS= 0.007xWIDTH

Q00796



SYMBOL OF QUALITY
AN ISO 9001 COMPANY

JINDAL ALUMINIUM LTD.
BHIWADI-301019 (INDIA)

1. ALL DIMENSIONS ARE IN mm.
2. ROUND OFF ALL SHARP CORNERS WITH 0.40 mm.
3. TOLERANCES WILL BE AS PER BS:EN-755-9 , UNLESS OTHERWISE SPECIFIED

	NAME	DATE
DRAWN	ASHUTOSH	02-08-2023
CHECKED	<i>[Signature]</i>	16/08/23
APPROVED	<i>[Signature]</i>	16/08/23
SCALE	4:1	
AREA mm ²	44.87	
PERIMETER mm.	55.04	
WEIGHT. kg/m	0.121	
DRAWING No.	SECTION No.	
P-JAL-B-289	7000001397	
G101255	G101255	

PARTY'S NAME	SDC METAL EMPORIUM LLP	
PARTY'S DRAWING No.	AS PER DRAWING	
ALLOY & TEMPER	6063 T6	PRODUCT CODE: -044
		HSN CODE: -76042990
DESCRIPTION	GLAZING CLIT SECTION	