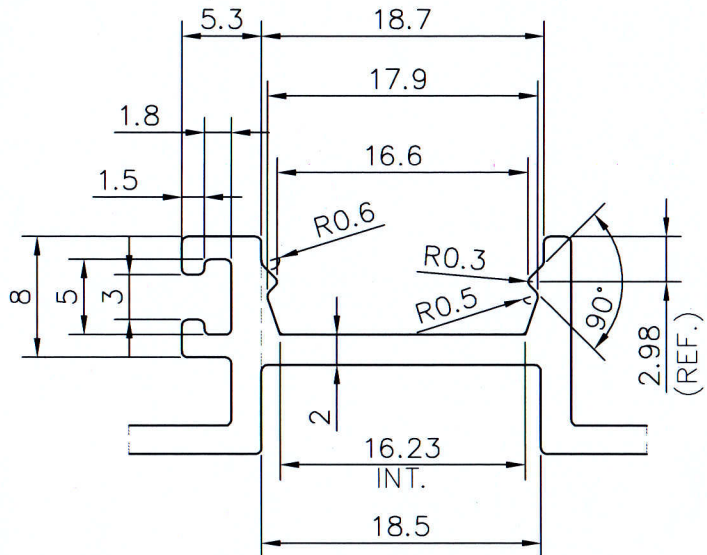
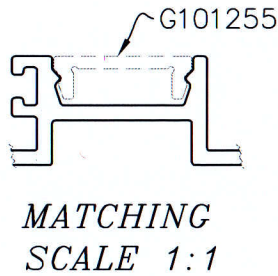
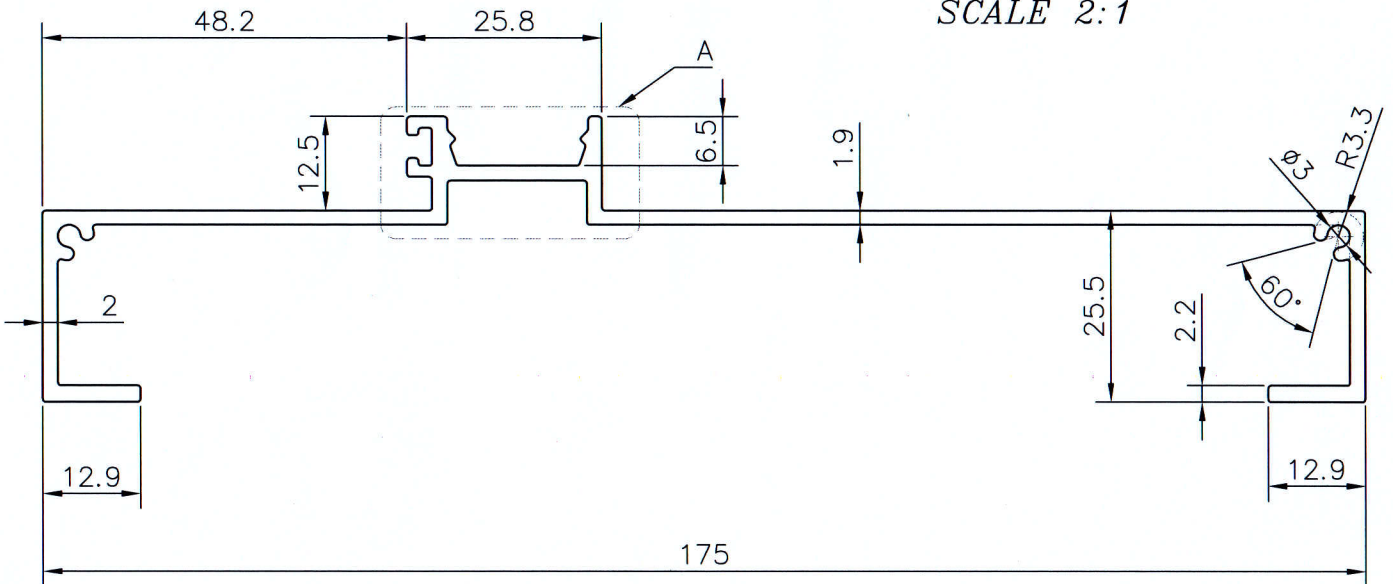


P-JAL-B-288

G101256




DETAIL A  
SCALE 2:1



- 1. STRAIGHTNESS= 1.7mm/M
- 2. TWIST= 1.7mm/M
- 3. ANGULARITY= ±2°
- 4. FLATNESS= 0.007xWIDTH

Q00795

 SYMBOL OF QUALITY AN ISO 9001 COMPANY	<b>JINDAL ALUMINIUM LTD.</b> BHIWADI-301019 (INDIA)	NAME	DATE
		DRAWN	ASHUTOSH 02-08-2023
1. ALL DIMENSIONS ARE IN mm. 2. ROUND OFF ALL SHARP CORNERS WITH 0.40 mm. 3. TOLERANCES WILL BE AS PER BS:EN-755-9 , UNLESS OTHERWISE SPECIFIED		CHECKED	16/8/23
		APPROVED	16/08/23
PARTY'S NAME SDC METAL EMPORIUM LLP		SCALE	1:1
		AREA mm <sup>2</sup>	561.17
PARTY'S DRAWING No. AS PER DRAWING		PERIMETER mm.	562.51
		WEIGHT kg/m	1.515
ALLOY & TEMPER 6063 T6		DRAWING No.	SECTION No.
		P-JAL-B-288	7000001398
DESCRIPTION CURTAIN-WALL SECTION		G101256	G101256
		PRODUCT CODE: -055	
		HSN CODE: -76042990	