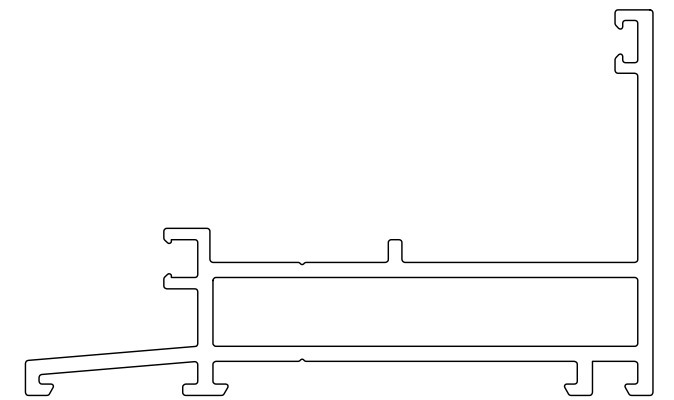
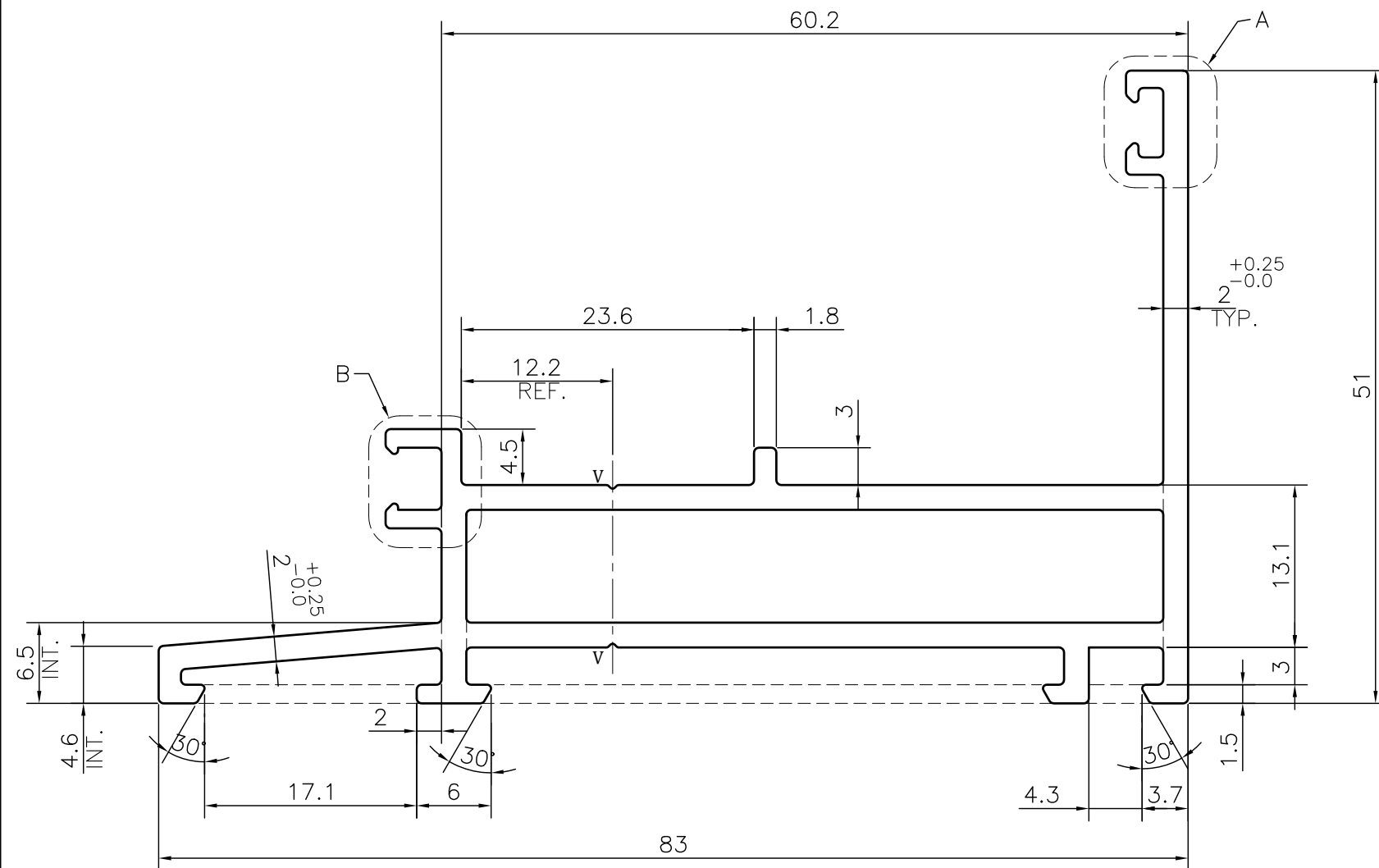


P-JAL-B-303

G101283



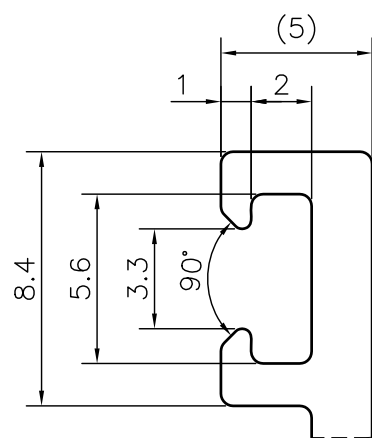
SCALE 1:1

ISSUE-2 (08-09-2023)

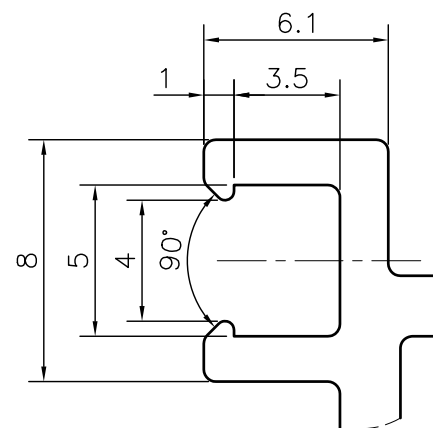
\* Thickness changed from 1.8mm to  $2^{+0.25}_{-0.0}$  as per customer Revised CAD Drawing

**NOTE:-**  
**V= 0.30x90° V-GROOVE (2 PLACES)**

1. STRAIGHTNESS= 1.7mm/M
2. TWIST= 1.7mm/M
3. ANGULARITY=  $\pm 2^\circ$
4. FLATNESS= 0.007xWIDTH



DETAIL A  
SCALE 4:1



DETAIL B  
SCALE 4:1

Q00801

CONTROLLED COPY



SYMBOL OF QUALITY  
AN ISO 9001 COMPANY

**JINDAL ALUMINIUM LTD.**  
 BANGALORE-560073 (INDIA)

1. ALL DIMENSIONS ARE IN mm.
2. ROUND OFF ALL SHARP CORNERS WITH 0.40 mm.
3. TOLERANCES WILL BE AS PER BS:EN-755-9 , UNLESS OTHERWISE SPECIFIED

PARTY'S NAME		K.S.V INFRABUILD, GREATER NOIDA	
PARTY'S DRAWING No.		AS PER AUTOCAD DRAWING-OPERABLE FRAME	
ALLOY & TEMPER		6063 T6	PRODUCT CODE:-055 HSN CODE:- 76042100
DESCRIPTION		CURTAIN WALL SECTION	
		NAME	DATE
		DRAWN	ASHUTOSH 08-09-2023
		CHECKED	PARVESH 08-09-2023
		APPROVED	J.N RAI 09-09-2023
		SCALE	2:1
		AREA mm <sup>2</sup>	471.128
		PERIMETER mm.	351.215
		WEIGHT kg/m	1.272
		DRAWING No.	SECTION No.
		P-JAL-B-303	
		G101283-ISSUE-2	G101283