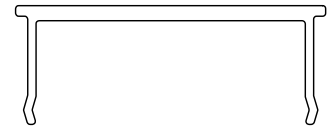
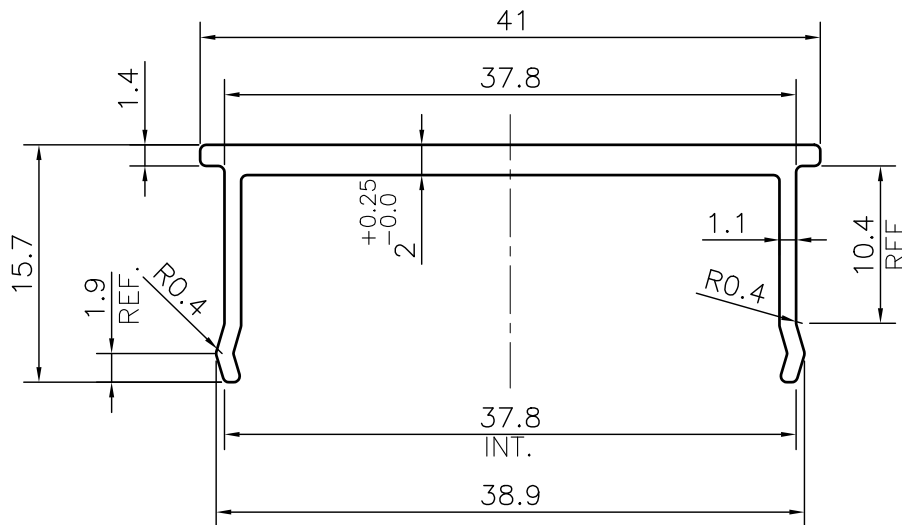


P-JAL-B-305

G101285



SCALE 1:1



ISSUE-2 (08-09-2023)

* Thickness changed from 1.4mm to 2mm^{+0.25}/_{-0.0} as per customer Revised CAD Drawing

- 1. STRAIGHTNESS= 1.7mm/M
- 2. TWIST= 1.7mm/M
- 3. ANGULARITY= ±2°
- 4. FLATNESS= 0.007xWIDTH

Q00806

CONTROLLED COPY



SYMBOL OF QUALITY
AN ISO 9001 COMPANY

JINDAL ALUMINIUM LTD.
BANGALORE-560073 (INDIA)

	NAME	DATE
DRAWN	ASHUTOSH	08-09-2023
CHECKED	PARVESH	08-09-2023
APPROVED	J.N RAI	09-09-2023

- 1. ALL DIMENSIONS ARE IN mm.
- 2. ROUND OFF ALL SHARP CORNERS WITH 0.40 mm.
- 3. TOLERANCES WILL BE AS PER BS:EN-755-9 , UNLESS OTHERWISE SPECIFIED

SCALE	2:1
AREA mm ²	110.408
PERIMETER mm.	139.31
WEIGHT kg/m	0.298
DRAWING No.	SECTION No.

PARTY'S NAME	K.S.V INFRABUILD, GREATER NOIDA		P-JAL-B-305	
PARTY'S DRAWING No.	AS PER AUTOCAD DRAWING-SIDE CAP ELEMENT-2		G101285-ISSUE-2	G101285
ALLOY & TEMPER	6063 T6	PRODUCT CODE:-055 HSN CODE:- 76042990		
DESCRIPTION	CURTAIN WALL SECTION			