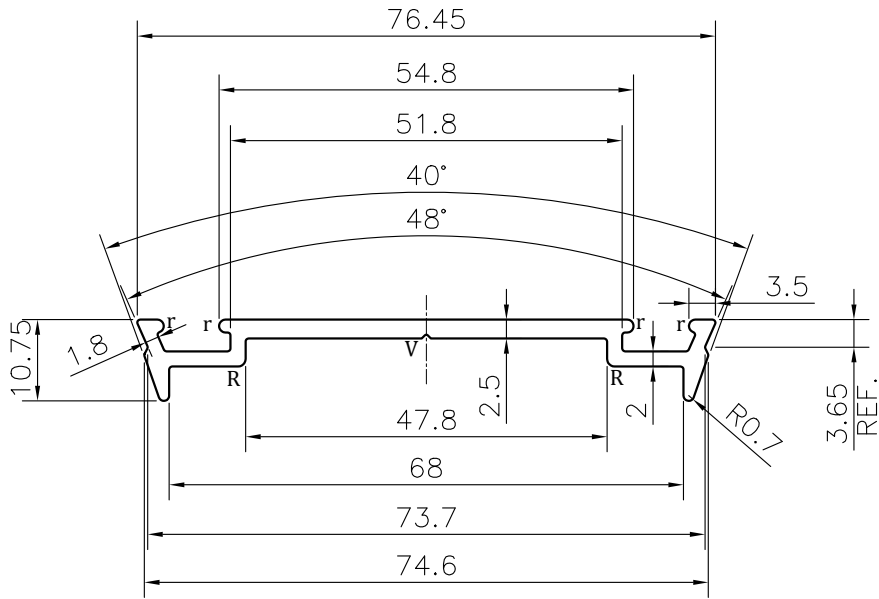


P-JAL-B-308

G101286



NOTE:-

r= 0.85 RADIUS (4 PLACES)

R= 1.0 RADIUS (2 PLACES)

V= 0.5x90° V-GROOVE (1 PLACE)

1. STRAIGHTNESS= 1.7mm/M
2. TWIST= 1.7mm/M
3. ANGULARITY= ±2°
4. FLATNESS= 0.007xWIDTH

Q00813

CONTROLLED COPY



SYMBOL OF QUALITY
AN ISO 9001 COMPANY

JINDAL ALUMINIUM LTD.
BANGALORE-560073 (INDIA)

	NAME	DATE
DRAWN	ASHUTOSH	05-08-2023
CHECKED		
APPROVED	J.N.RAI	28-08-2023
SCALE		1:1
AREA mm ²		232.146
PERIMETER mm.		204.6
WEIGHT kg/m		0.627
DRAWING No.	SECTION No.	
P-JAL-B-308		
G101286	G101286	

1. ALL DIMENSIONS ARE IN mm.
2. ROUND OFF ALL SHARP CORNERS WITH 0.40 mm.
3. TOLERANCES WILL BE AS PER BS:EN-755-9 , UNLESS OTHERWISE SPECIFIED

PARTY'S NAME	K.S.V INFRABUILD, GREATER NOIDA	
PARTY'S DRAWING No.	AS PER AUTOCAD DRAWING-136x80HORIZONTAL FIN ELEMENT-2	
ALLOY & TEMPER	6063 T6	PRODUCT CODE:-055
		HSN CODE:- 76042990
DESCRIPTION	CURTAIN WALL SECTION	