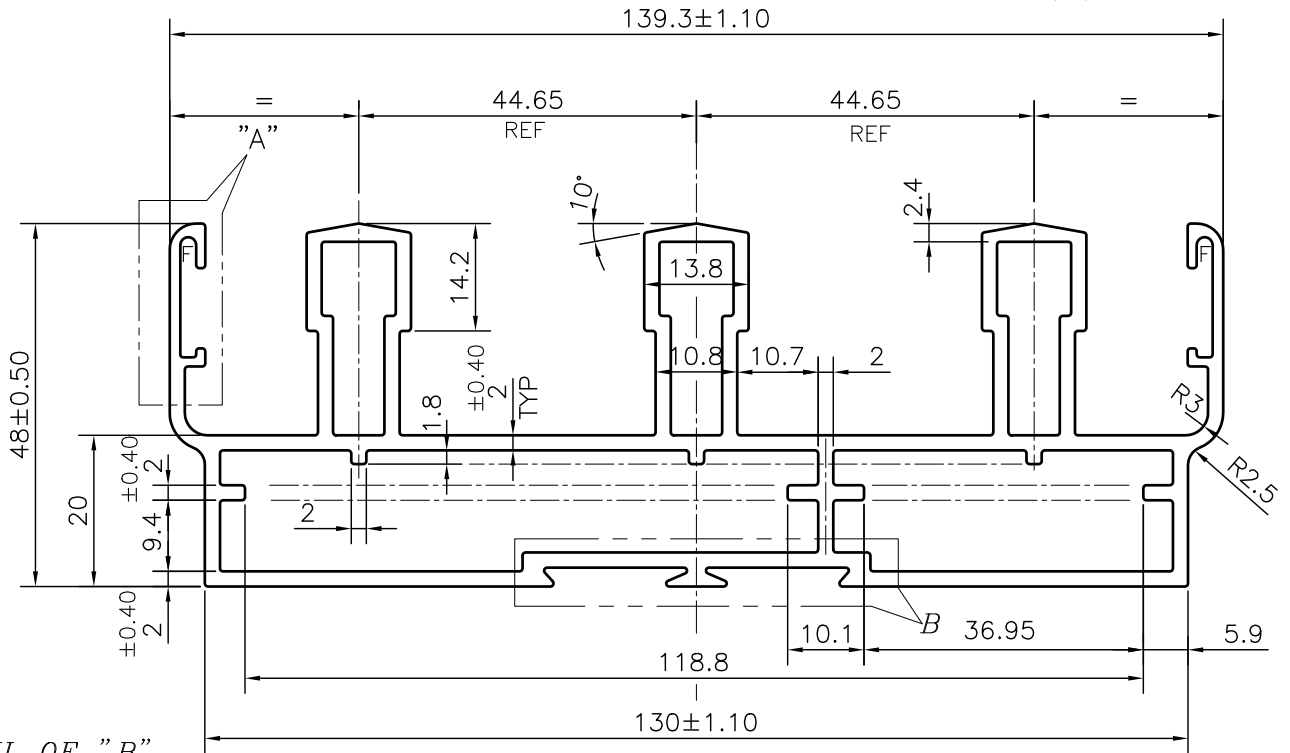
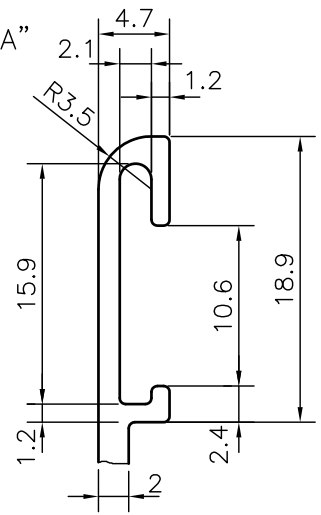


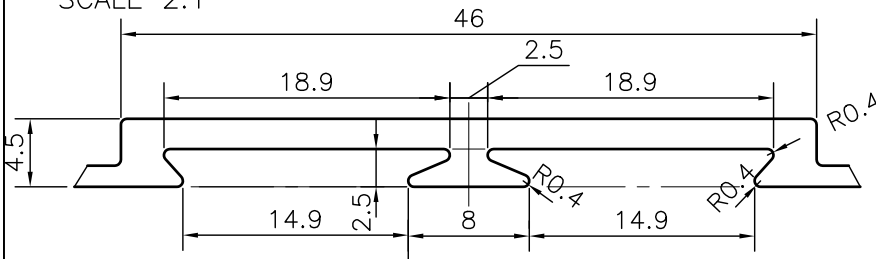
P-25968

G101361

DETAILS OF "A"
SCALE 2:1



DETAIL OF "B"
SCALE 2:1



F = FULL RADIUS (2 PLACES)

1. STRAIGHTNESS=1.7mm/M
2. TWIST=1.7mm/M
3. ANGULARITY= ±2°
4. FLATNESS =0.007xWIDTH

FINISH :-POWDER COATING

CONTROLLED COPY



SYMBOL OF QUALITY
AN ISO 9001 COMPANY

JINDAL ALUMINIUM LTD.
BANGALORE-560073 (INDIA)

	NAME	DATE
DRAWN	J.P.KAUSHIK	29-08-2023
CHECKED		
APPROVED	B.NATARAJA	16-09-2023
SCALE		1:1
AREA mm ²		1213.563
PERIMETER mm.		656.047
WEIGHT kg/m		3.277

1. ALL DIMENSIONS ARE IN mm.
2. ROUND OFF ALL SHARP CORNERS WITH 0.40 mm.
3. TOLERANCES WILL BE AS PER IS:6477-1983 , UNLESS OTHERWISE SPECIFIED

PARTY'S NAME	AHLUWALIA CONTRACTS INDIA LTD., NEW DELHI		DRAWING No.	SECTION No.
PARTY'S DRAWING No.	AS PER DRAWING		P-25968	7000001515
ALLOY & TEMPER	6063 T6	PRODUCT CODE:-048	G101361	G101361
		HSN CODE:-76042100		
DESCRIPTION	WINDOW SECTION			