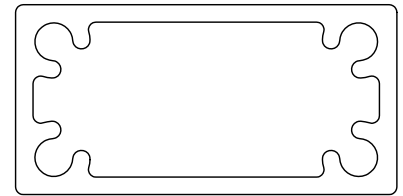
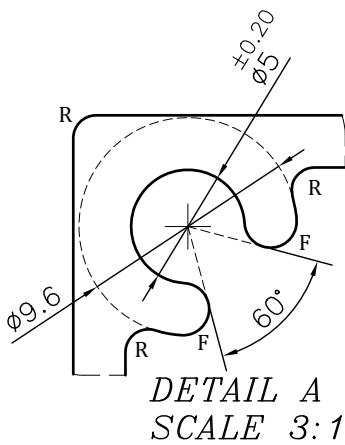
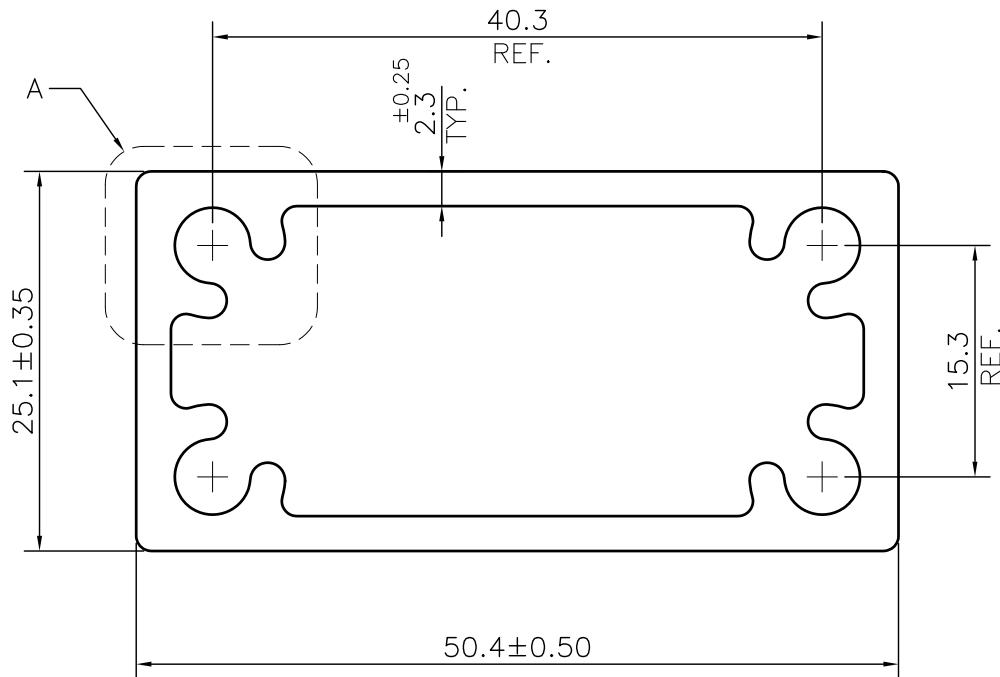


P-JAL-B-332

G101424



SCALE 1:1



NOTE:-
R= 1.0 RADIUS (12 PLACES)
F= FULL RADIUS (8 PLACES)

1. STRAIGHTNESS= 1.7mm/M
2. TWIST= 1.7mm/M
3. ANGULARITY= ±2°
4. FLATNESS= 0.007xWIDTH

Q00862

CONTROLLED COPY



SYMBOL OF QUALITY
AN ISO 9001 COMPANY

JINDAL ALUMINIUM LTD.
 BHIWADI-301019 (INDIA)

	NAME	DATE
DRAWN	ASHUTOSH	06-09-2023
CHECKED	PARVESH	06-10-2023
APPROVED	J.N RAI	06-10-2023
SCALE	2:1	
AREA mm ²	408.321	
PERIMETER mm.	149.283	
WEIGHT kg/m	1.102	
DRAWING No.	SECTION No.	
P-JAL-B-332	7000001555	
G101424	G101424	

1. ALL DIMENSIONS ARE IN mm.
2. ROUND OFF ALL SHARP CORNERS WITH 0.40 mm.
3. TOLERANCES WILL BE AS PER BS:EN-755-9 , UNLESS OTHERWISE SPECIFIED

PARTY'S NAME	ACCURATE ENGINEERS, NEW DELHI	
PARTY'S DRAWING No.	AS PER DRAWING	
ALLOY & TEMPER	6063 T6	PRODUCT CODE:-056
		HSN CODE:- 76042100
DESCRIPTION	ARCHITECTURAL MISCELLANEOUS SECTION	