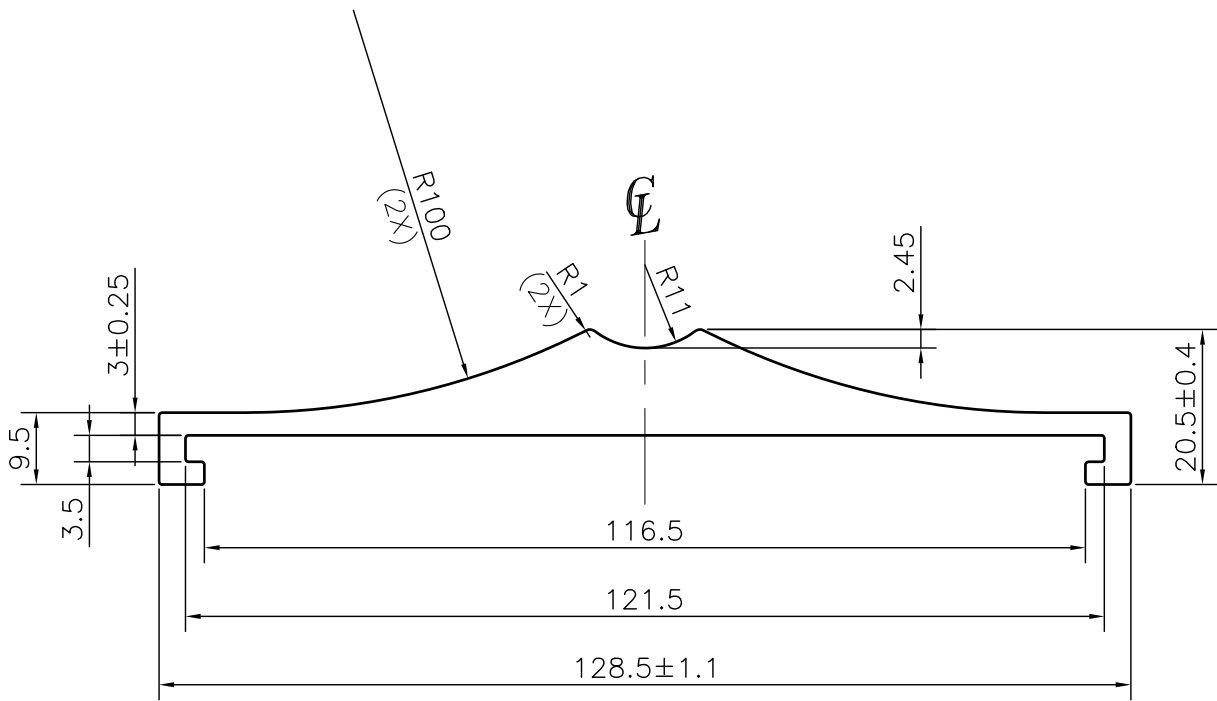


P-JAL-B-331

G101425



- 1. STRAIGHTNESS= 1.7mm/M
- 2. TWIST= 1.7mm/M
- 3. ANGULARITY= ±2°
- 4. FLATNESS= 0.007xWIDTH

Q00861

CONTROLLED COPY



SYMBOL OF QUALITY
AN ISO 9001 COMPANY

JINDAL ALUMINIUM LTD.
BHIWADI-301019 (INDIA)

	NAME	DATE
DRAWN	ASHUTOSH	06-09-2023
CHECKED	PARVESH	06-10-2023
APPROVED	J.N RAI	06-10-2023
SCALE		1:1
AREA mm ²		914.464
PERIMETER mm.		301.5
WEIGHT kg/m		2.469
DRAWING No.		SECTION No.
P-JAL-B-331		7000001560
G101425		G101425

- 1. ALL DIMENSIONS ARE IN mm.
- 2. ROUND OFF ALL SHARP CORNERS WITH 0.40 mm.
- 3. TOLERANCES WILL BE AS PER BS:EN-755-9 , UNLESS OTHERWISE SPECIFIED

PARTY'S NAME	ACCURATE ENGINEERS, NEW DELHI	
PARTY'S DRAWING No.	AS PER DRAWING	
ALLOY & TEMPER	6063 T6	PRODUCT CODE:-085
		HSN CODE:- 76042990
DESCRIPTION	INDUSTRIAL MISCELLANEOUS SECTION	