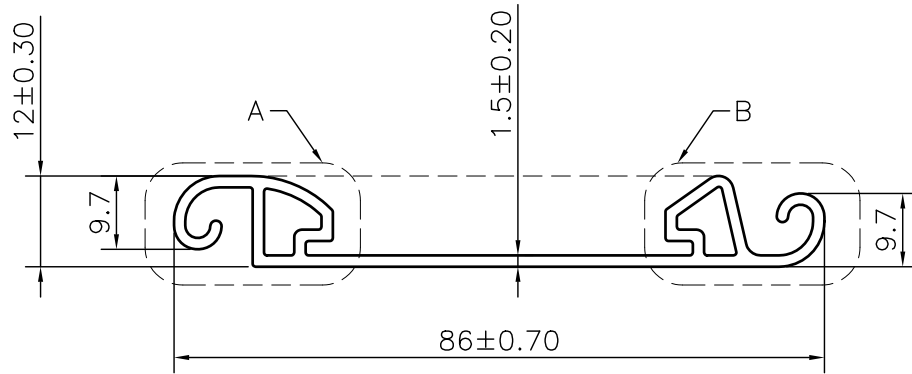
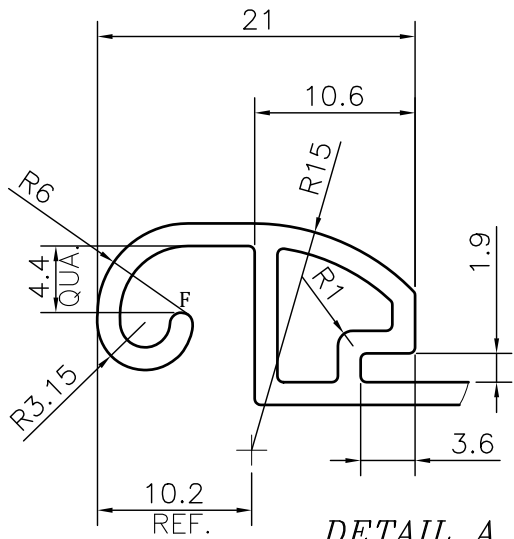


P-JAL-B-336

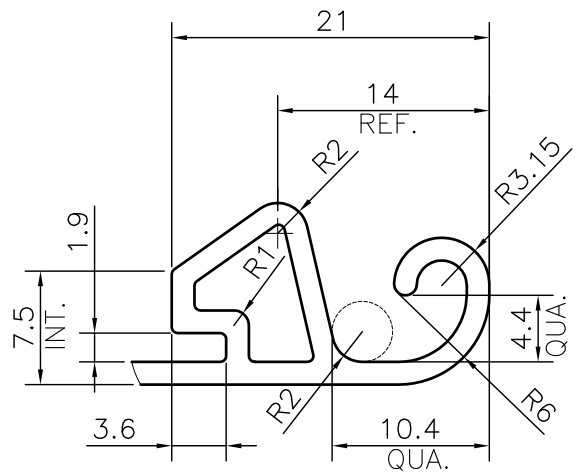
G101467



☞ **FITMENT WILL BE TAKEN CARE BY CUSTOMER END ONLY**



**DETAIL A
SCALE 2:1**



**DETAIL B
SCALE 2:1**

1. STRAIGHTNESS= 1.7mm/M
2. TWIST= 1.7mm/M
3. ANGULARITY= ±2°
4. FLATNESS= 0.007xWIDTH

Q00927

CONTROLLED COPY



SYMBOL OF QUALITY
AN ISO 9001 COMPANY

JINDAL ALUMINIUM LTD.
BHIWADI-301019 (INDIA)

	NAME	DATE
DRAWN	ASHUTOSH	23-09-2023
CHECKED	PARVESH	10-10-2023
APPROVED	J.N. RAI	10-10-2023
SCALE		1:1
AREA mm ²		246.681
PERIMETER mm.		263.062
WEIGHT kg/m		0.666
DRAWING No.		SECTION No.
P-JAL-B-336		7000001620
G101467		G101467

1. ALL DIMENSIONS ARE IN mm.
2. ROUND OFF ALL SHARP CORNERS WITH 0.40 mm.
3. TOLERANCES WILL BE AS PER BS:EN-755-9 , UNLESS OTHERWISE SPECIFIED

PARTY'S NAME	SIDHARTH STEELS & GLASS INDUSTRIES	
PARTY'S DRAWING No.	AS PER SAMPLE & REQUIREMENTS	
ALLOY & TEMPER	6063 T6	PRODUCT CODE:-087
		HSN CODE:- 76042100
DESCRIPTION	SHUTTER SECTION	