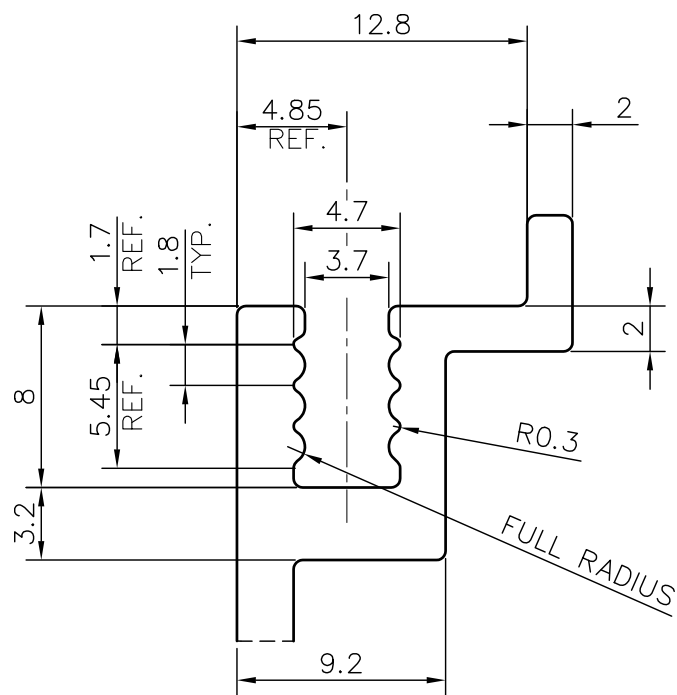


DETAIL B  
SCALE 3:1

☞ **THICKNESS LESS THEN 2mm WILL NOT BE ACCEPTED**




DETAIL A  
SCALE 3:1

**NOTE:-**  
**R= 1.0 RADIUS (9 PLACES)**  
**S= 2.0 RADIUS (4 PLACES)**  
**F= FULL RADIUS (8 PLACES)**  
**C= 2x45° CHAMFER (2 PLACES)**

1. STRAIGHTNESS= 1.7mm/M
2. TWIST= 1.7mm/M
3. ANGULARITY= ±2°
4. FLATNESS= 0.007xWIDTH

(Q00754)

 SYMBOL OF QUALITY AN ISO 9001 COMPANY	<b>JINDAL ALUMINIUM LTD.</b> BHIWADI-301019 (INDIA)	NAME	DATE	
		DRAWN	ASHUTOSH	01-08-2023
		CHECKED	PARVESH	11-10-2023
		APPROVED	J.N.RAI	11-10-2023
1. ALL DIMENSIONS ARE IN mm. 2. ROUND OFF ALL SHARP CORNERS WITH 0.40 mm. 3. TOLERANCES WILL BE AS PER BS:EN-755-9, UNLESS OTHERWISE SPECIFIED		SCALE	1:1	
		AREA mm <sup>2</sup>	951.97	
		PERIMETER mm.	791.13	
		WEIGHT kg/m	2.570	
PARTY'S NAME	AASTHA ALUMINA (P) LTD., GURGAON	DRAWING No.	SECTION No.	
PARTY'S DRAWING No.	AS PER AUTOCAD DRAWING-AA-CT-AL-04	P-JAL-B-285-1	7000001623	
ALLOY & TEMPER	6063 T6	G101470	G101470	
DESCRIPTION	CURTAIN WALL SECTION-CILL TRANSOM			