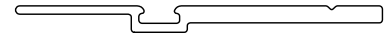
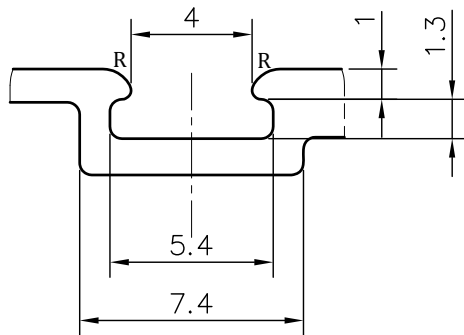
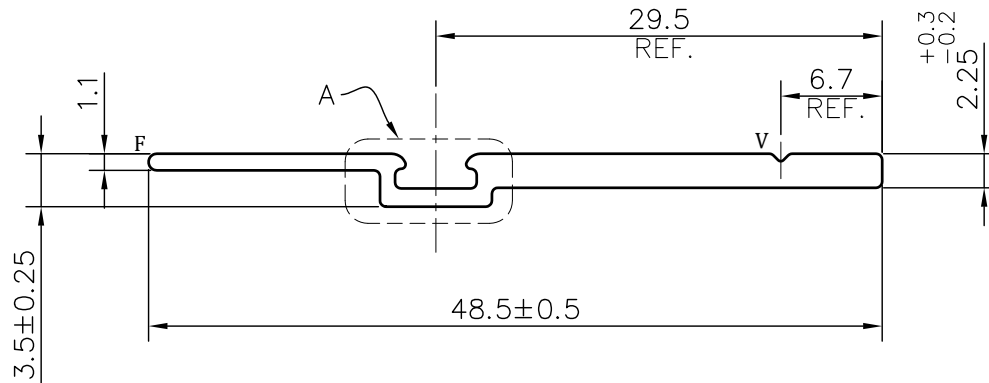


P-JAL-B-300-1

G101471



SCALE 1:1



DETAIL A  
SCALE 4:1

☞ **THICKNESS LESS THEN 2mm WILL NOT BE ACCEPTED**

**NOTE:-**

**R= 1.0 RADIUS (2 PLACES)**

**F= FULL RADIUS (1 PLACE)**

**V= 0.5x90° V-GROOVE (1 PLACE)**

1. STRAIGHTNESS= 1.7mm/M
2. TWIST= 1.7mm/M
3. ANGULARITY= ±2°
4. FLATNESS= 0.007xWIDTH

(Q00779)



SYMBOL OF QUALITY  
AN ISO 9001 COMPANY

**JINDAL ALUMINIUM LTD.**  
BHIWADI-301019 (INDIA)

	NAME	DATE
DRAWN	ASHUTOSH	02-09-2023
CHECKED	PARVESH	11-10-2023
APPROVED	J.N.RAI	11-10-2023
SCALE		2:1
AREA mm <sup>2</sup>		88.975
PERIMETER mm.		108.57
WEIGHT kg/m		0.240
DRAWING No.		SECTION No.
P-JAL-B-300-1		7000001624
G101471		G101471

1. ALL DIMENSIONS ARE IN mm.
2. ROUND OFF ALL SHARP CORNERS WITH 0.40 mm.
3. TOLERANCES WILL BE AS PER BS:EN-755-9 , UNLESS OTHERWISE SPECIFIED

PARTY'S NAME	AASTHA ALUMINA (P) LTD., GURGAON	
PARTY'S DRAWING No.	AS PER DRAWING-GLOSS ADDONE	
ALLOY & TEMPER	6063 T6	PRODUCT CODE:-055
		HSN CODE:- 76042990
DESCRIPTION	CURTAIN WALL SECTION	