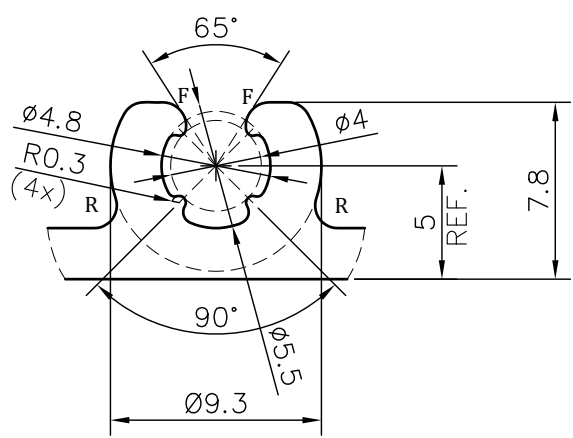
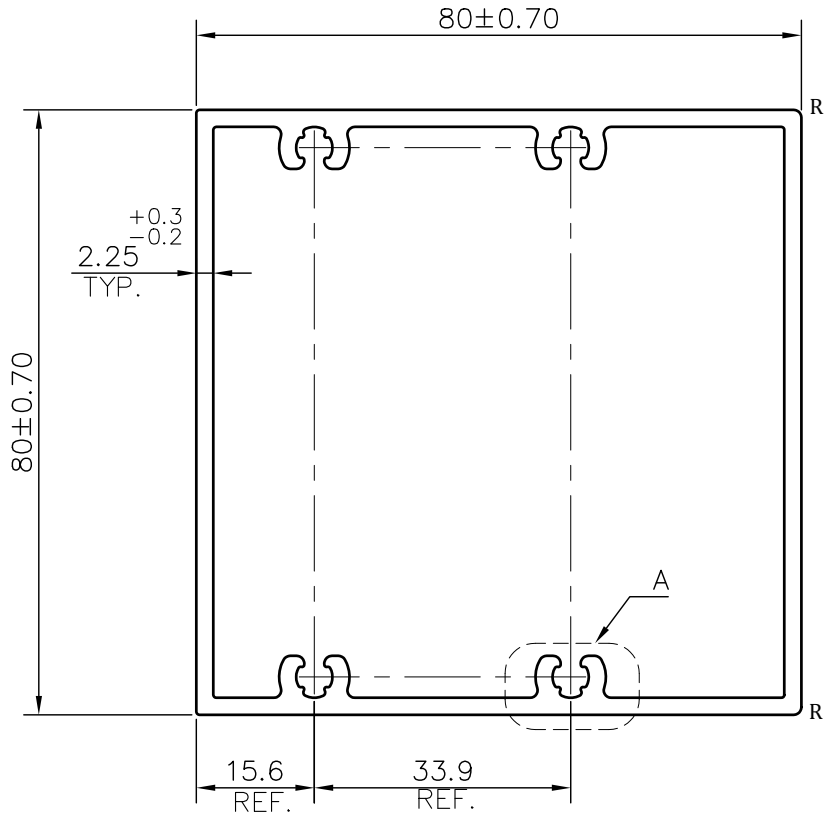


P-JAL-B-299-1
G101472




THICKNESS LESS THEN 2mm WILL NOT BE ACCEPTED

NOTE:-
R= 1.0 RADIUS (10 PLACES)
F= FULL RADIUS (2 PLACES)

1. STRAIGHTNESS= 1.7mm/M
2. TWIST= 1.7mm/M
3. ANGULARITY= ±2°
4. FLATNESS= 0.007xWIDTH

(Q00778)

 SYMBOL OF QUALITY AN ISO 9001 COMPANY	JINDAL ALUMINIUM LTD. BHIWADI-301019 (INDIA)	NAME	DATE	
		DRAWN	ASHUTOSH	02-09-2023
1. ALL DIMENSIONS ARE IN mm. 2. ROUND OFF ALL SHARP CORNERS WITH 0.40 mm. 3. TOLERANCES WILL BE AS PER BS:EN-755-9 , UNLESS OTHERWISE SPECIFIED		CHECKED	PARVESH	11-10-2023
		APPROVED	J.N.RAI	11-10-2023
PARTY'S NAME AASTHA ALUMINA (P) LTD., GURGAON		SCALE	1:1	
		AREA mm ²	816.466	
PARTY'S DRAWING No. AS PER DRAWING-INTERMEDIATED TRANSOM AT STONE LOCATION ONLY		PERIMETER mm.	318.80	
		WEIGHT kg/m	2.204	
ALLOY & TEMPER 6063 T6		DRAWING No.	SECTION No.	
		P-JAL-B-299-1	G101472	
DESCRIPTION CURTAIN WALL SECTION		G101472	G101472	
		PRODUCT CODE:-055		
		HSN CODE:- 76042100		