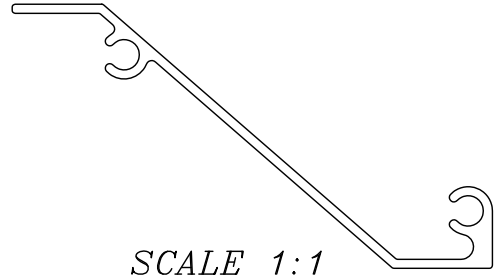
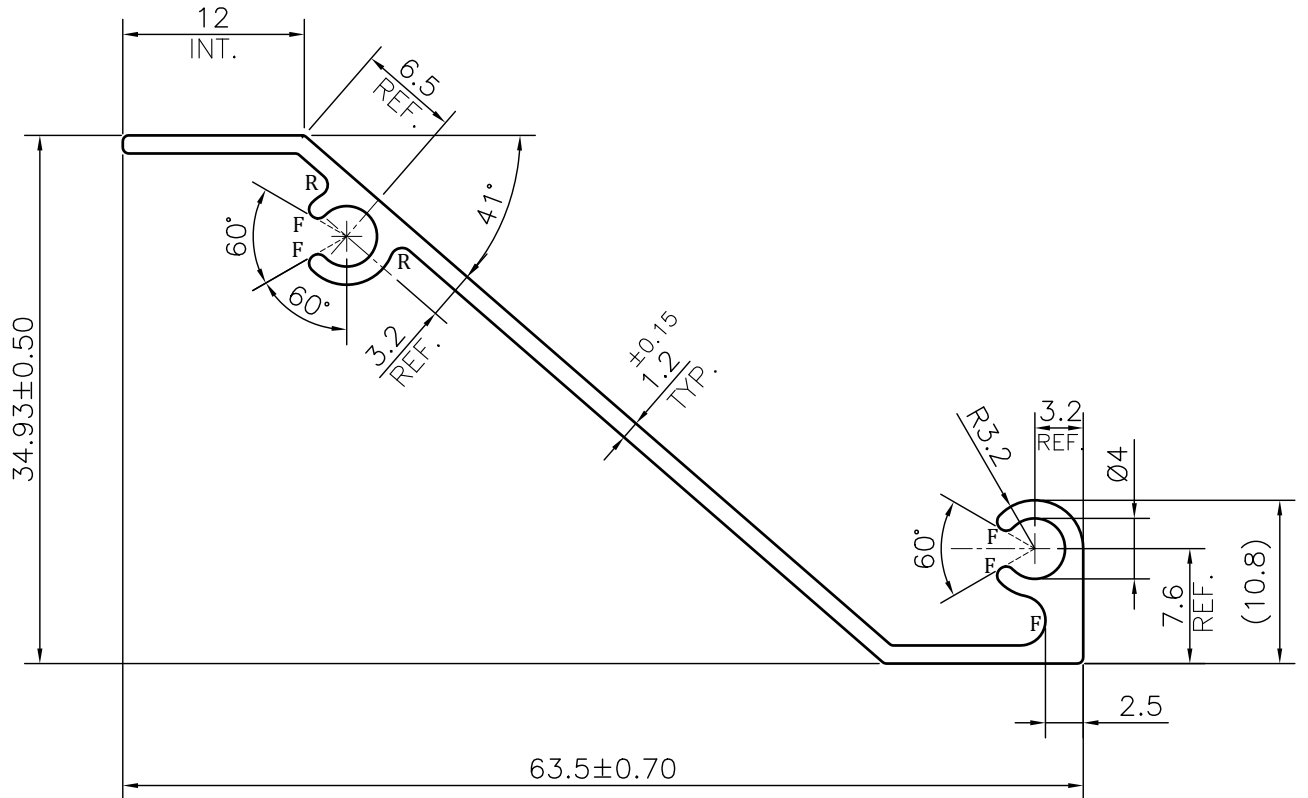


P-JAL-B-348

G101488



SCALE 1:1



NOTE:-

F= FULL RADIUS (5 PLACES)

1. STRAIGHTNESS= 1.7mm/M
2. TWIST= 1.7mm/M
3. ANGULARITY= $\pm 2^\circ$
4. FLATNESS= 0.007xWIDTH

Q00984

CONTROLLED COPY



SYMBOL OF QUALITY
AN ISO 9001 COMPANY

JINDAL ALUMINIUM LTD.
BHIWADI-301019 (INDIA)

	NAME	DATE
DRAWN	ASHUTOSH	07-10-2023
CHECKED	PARVESH	12-10-2023
APPROVED	J.N.RAI	12-10-2023
SCALE		2:1
AREA mm ²		130.957
PERIMETER mm.		200.01
WEIGHT kg/m		0.354
DRAWING No.	SECTION No.	
P-JAL-B-348	7000001647	
G101488	G101488	

1. ALL DIMENSIONS ARE IN mm.
2. ROUND OFF ALL SHARP CORNERS WITH 0.40 mm.
3. TOLERANCES WILL BE AS PER BS:EN-755-9 , UNLESS OTHERWISE SPECIFIED

PARTY'S NAME	QUALITY GLASS, DELHI	
PARTY'S DRAWING No.	AS PER PROPOSED DRAWING	
ALLOY & TEMPER	6063 T6	PRODUCT CODE:-048
		HSN CODE:- 76042990
DESCRIPTION	LOUVRE SECTION	