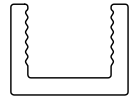
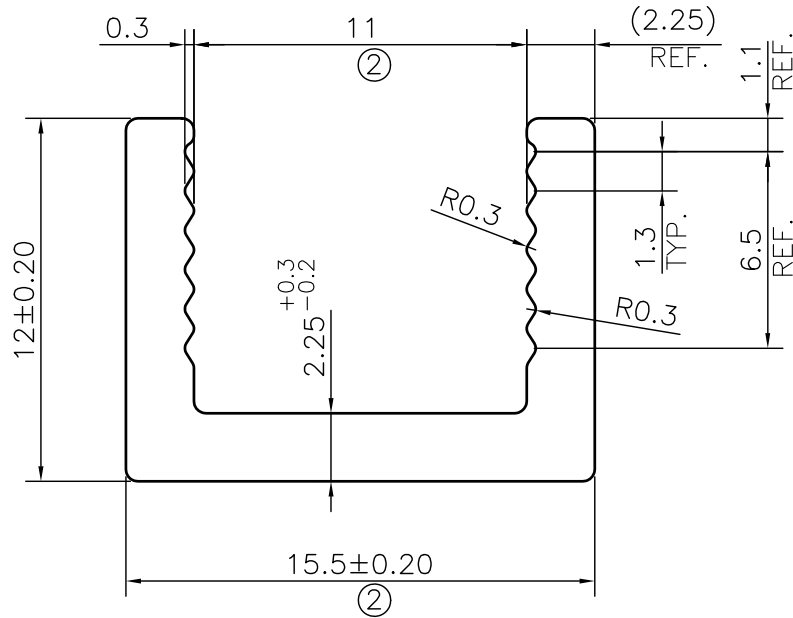


P-JAL-B-339-2

G101641



SCALE 1:1



☞ **THICKNESS LESS THEN 2mm WILL NOT BE ACCEPTED**

ISSUE-2 (02-02-2024)

- \* Dimension 10mm changed in to 11mm.
- \* Dimension 14.5mm changed in to 15.5mm.

1. STRAIGHTNESS= 1.7mm/M
2. TWIST= 1.7mm/M
3. ANGULARITY=  $\pm 2^\circ$
4. FLATNESS= 0.007xWIDTH

Q00947

CONTROLLED COPY



SYMBOL OF QUALITY  
AN ISO 9001 COMPANY

**JINDAL ALUMINIUM LTD.**  
BHIWADI-301019 (INDIA)

	NAME	DATE
DRAWN	ASHUTOSH	02-02-2024
CHECKED	PARVESH	03-02-2024
APPROVED	J.N.RAI	03-02-2024

1. ALL DIMENSIONS ARE IN mm.
2. ROUND OFF ALL SHARP CORNERS WITH 0.40 mm.
3. TOLERANCES WILL BE AS PER BS:EN-755-9 , UNLESS OTHERWISE SPECIFIED

SCALE	4:1
AREA mm <sup>2</sup>	76.312
PERIMETER mm.	75.05
WEIGHT kg/m	0.206

PARTY'S NAME	AASTHA ALUMINA (P) LIMITED., GURUGRAM		DRAWING No.	SECTION No.
PARTY'S DRAWING No.	AS PER DRAWING		P-JAL-B-339-2	7000001785
ALLOY & TEMPER	6063 T6	PRODUCT CODE:-055	G101641-ISSUE-2	G101641
		HSN CODE:- 76042990		
DESCRIPTION	MISC. CHANNEL SECTION			